

## HIGHLIGHTS OF PRESCRIBING INFORMATION

These highlights do not include all the information needed to use SARCLISA safely and effectively. See full prescribing information for SARCLISA.

SARCLISA® (isatuximab-irfc) injection, for intravenous use  
Initial U.S. Approval: 2020

### RECENT MAJOR CHANGES

Warnings and Precautions (5.1) 6/2026

### INDICATIONS AND USAGE

SARCLISA is a CD38-directed cytolytic antibody indicated:

- in combination with pomalidomide and dexamethasone, for the treatment of adult patients with multiple myeloma who have received at least 2 prior therapies including lenalidomide and a proteasome inhibitor.
- in combination with carfilzomib and dexamethasone, for the treatment of adult patients with relapsed or refractory multiple myeloma who have received 1 to 3 prior lines of therapy.
- in combination with bortezomib, lenalidomide and dexamethasone, for the treatment of adult patients with newly diagnosed multiple myeloma who are not eligible for autologous stem cell transplant (ASCT). (1)

### DOSAGE AND ADMINISTRATION

- Premedicate with dexamethasone, acetaminophen, H2 antagonists, and diphenhydramine. (2.2)
- The recommended dosage of SARCLISA is 10 mg/kg as an intravenous infusion. See full prescribing information for SARCLISA schedules of administration and drugs used in combination. (2.1)

### DOSAGE FORMS AND STRENGTHS

Injection:

- 100 mg/5 mL (20 mg/mL) solution in single-dose vial (3)
- 500 mg/25 mL (20 mg/mL) solution in single-dose vial (3)

### CONTRAINDICATIONS

Patients with severe hypersensitivity to isatuximab-irfc or to any of its excipients. (4)

### WARNINGS AND PRECAUTIONS

- **Infusion-Related Reactions:** In case of grade  $\geq 2$ , interrupt SARCLISA and manage medically. Permanently discontinue for grade 4 infusion-related reactions or anaphylactic reaction. (5.1)
- **Infections:** SARCLISA can cause serious and fatal infections. Monitor patients for signs and symptoms of infection and treat appropriately. (5.2)
- **Neutropenia:** Monitor complete blood cell counts periodically during treatment. Monitor patients with neutropenia for signs of infection.

SARCLISA dose delays and the use of colony-stimulating factor may be required to allow improvement of neutrophil count. (5.3)

- **Second Primary Malignancies (SPM):** Monitor patients for the development of second primary malignancies. (5.4)
- **Laboratory Test Interference:**
  - Interference with Serological Testing (Indirect Antiglobulin Test): Type and screen patients prior to starting treatment. Inform blood banks that a patient has received SARCLISA. (5.5, 7.1)
  - Interference with Serum Protein Electrophoresis and Immunofixation Tests: SARCLISA may interfere with the assays used to monitor M-protein, which may impact the determination of complete response. (5.5, 7.1)
- **Embryo-Fetal Toxicity:** Can cause fetal harm. (5.6)

### ADVERSE REACTIONS

- **In combination with pomalidomide and dexamethasone:** The most common adverse reactions ( $\geq 20\%$ ) are upper respiratory tract infection, infusion-related reactions, pneumonia, and diarrhea. The most common hematology laboratory abnormalities ( $\geq 80\%$ ) are decreased hemoglobin, decreased neutrophils, decreased lymphocytes, and decreased platelets. (6.1)
- **In combination with carfilzomib and dexamethasone:** The most common adverse reactions ( $\geq 20\%$ ) are upper respiratory tract infection, infusion-related reactions, fatigue, hypertension, diarrhea, pneumonia, dyspnea, insomnia, bronchitis, cough, and back pain. The most common hematology laboratory abnormalities ( $\geq 80\%$ ) are decreased hemoglobin, decreased lymphocytes, and decreased platelets. (6.1)
- **In combination with bortezomib, lenalidomide and dexamethasone:** The most common adverse reactions ( $\geq 20\%$ ) are upper respiratory tract infections, diarrhea, fatigue, peripheral sensory neuropathy, pneumonia, musculoskeletal pain, cataract, constipation, peripheral edema, rash, infusion-related reaction, insomnia, and COVID-19. The most common hematologic laboratory abnormalities ( $\geq 80\%$ ) are decreased hemoglobin, decreased leukocytes, decreased lymphocytes, decreased platelets, and decreased neutrophils. (6.1)

To report SUSPECTED ADVERSE REACTIONS, contact sanofi-aventis U.S. LLC at 1-800-633-1610 or FDA at 1-800-FDA-1088 or [www.fda.gov/medwatch](http://www.fda.gov/medwatch).

### USE IN SPECIFIC POPULATIONS

**Lactation:** Advise not to breastfeed. (8.2)

See 17 for PATIENT COUNSELING INFORMATION and FDA-approved patient labeling.

Revised: 6/2026

## FULL PRESCRIBING INFORMATION: CONTENTS\*

### 1 INDICATIONS AND USAGE

### 2 DOSAGE AND ADMINISTRATION

- 2.1 Recommended Dosage
- 2.2 Recommended Premedications and Antimicrobial Prophylaxis
- 2.3 Dosage Modifications
- 2.4 Preparation
- 2.5 Administration

### 3 DOSAGE FORMS AND STRENGTHS

### 4 CONTRAINDICATIONS

### 5 WARNINGS AND PRECAUTIONS

- 5.1 Infusion-Related Reactions
- 5.2 Infections
- 5.3 Neutropenia
- 5.4 Second Primary Malignancies
- 5.5 Laboratory Test Interference
- 5.6 Embryo-Fetal Toxicity

### 6 ADVERSE REACTIONS

- 6.1 Clinical Trials Experience
- 6.2 Postmarketing Experience

### 7 DRUG INTERACTIONS

- 7.1 Laboratory Test Interference

### 8 USE IN SPECIFIC POPULATIONS

- 8.1 Pregnancy
- 8.2 Lactation
- 8.3 Females and Males of Reproductive Potential
- 8.4 Pediatric Use
- 8.5 Geriatric Use

### 11 DESCRIPTION

### 12 CLINICAL PHARMACOLOGY

- 12.1 Mechanism of Action
- 12.2 Pharmacodynamics
- 12.3 Pharmacokinetics
- 12.6 Immunogenicity

### 13 NONCLINICAL TOXICOLOGY

- 13.1 Carcinogenesis, Mutagenesis, Impairment of Fertility

### 14 CLINICAL STUDIES

### 16 HOW SUPPLIED/STORAGE AND HANDLING

### 17 PATIENT COUNSELING INFORMATION

\*Sections or subsections omitted from the full prescribing information are not listed.

## FULL PRESCRIBING INFORMATION

### 1 INDICATIONS AND USAGE

SARCLISA is indicated:

- in combination with pomalidomide and dexamethasone, for the treatment of adult patients with multiple myeloma who have received at least 2 prior therapies including lenalidomide and a proteasome inhibitor.
- in combination with carfilzomib and dexamethasone, for the treatment of adult patients with relapsed or refractory multiple myeloma who have received 1 to 3 prior lines of therapy.
- in combination with bortezomib, lenalidomide, and dexamethasone, for the treatment of adult patients with newly diagnosed multiple myeloma who are not eligible for autologous stem cell transplant (ASCT).

### 2 DOSAGE AND ADMINISTRATION

#### 2.1 Recommended Dosage

- Administer pre-infusion medications [see *Dosage and Administration (2.2)*].
- SARCLISA should be administered by a healthcare professional, with immediate access to emergency equipment and appropriate medical support to manage infusion-related reactions if they occur [see *Warnings and Precautions (5.1)*].

The recommended dose of SARCLISA is 10 mg/kg actual body weight administered as an intravenous infusion in combination with pomalidomide and dexamethasone or in combination with carfilzomib and dexamethasone, or in combination with bortezomib, lenalidomide, and dexamethasone.

SARCLISA dosing schedules are provided in Tables 1 and 2 [see *Clinical Studies (14)*].

**Table 1: SARCLISA Dosing Schedule in Combination with Pomalidomide and Dexamethasone or in Combination with Carfilzomib and Dexamethasone**

Cycles	Dosing schedules
Cycle 1 (28-day cycle)	Days 1, 8, 15, and 22 (weekly)
Cycle 2 and beyond (28-day cycles)	Days 1, 15 (every 2 weeks)

**Table 2: SARCLISA Dosing Schedule in Combination with Bortezomib, Lenalidomide, and Dexamethasone**

Cycles	Dosing schedules
Cycle 1 (42-day cycle)	Days 1, 8, 15, 22, and 29
Cycles 2 to 4 (42-day cycles)	Days 1, 15, and 29 (every 2 weeks)
Cycles 5 to 17 (28-day cycles)	Days 1 and 15 (every 2 weeks)
Cycles 18 and beyond (28-day cycles)	Day 1 (every 4 weeks)

Treatment is repeated until disease progression or unacceptable toxicity.

SARCLISA is used in combination with pomalidomide and dexamethasone or in combination with carfilzomib and dexamethasone or in combination with bortezomib, lenalidomide, and dexamethasone. For dosing instructions of combination agents administered with SARCLISA, see Clinical Studies (14) and manufacturer's prescribing information.

### Missed SARCLISA Doses

If a planned dose of SARCLISA is missed, administer the dose as soon as possible and adjust the treatment schedule accordingly, maintaining the treatment interval.

## **2.2 Recommended Premedications and Antimicrobial Prophylaxis**

### Recommended Premedications

Administer the following premedications prior to SARCLISA infusion to reduce the risk and severity of infusion-related reactions [*see Warnings and Precautions (5.1)*]:

- When administered in combination with SARCLISA and pomalidomide:  
Dexamethasone 40 mg orally or intravenously (or 20 mg orally or intravenously for patients  $\geq 75$  years of age).  
  
When administered in combination with SARCLISA and carfilzomib:  
Dexamethasone 20 mg (intravenously on the days of SARCLISA and/or carfilzomib infusions, orally on day 22 in cycle 2 and beyond, and orally on day 23 in all cycles).  
  
When administered in combination with SARCLISA, bortezomib, and lenalidomide:  
Dexamethasone 20 mg (intravenously on the days of SARCLISA infusions, orally on the other days).
- Acetaminophen 650 mg to 1,000 mg orally (or equivalent).
- H<sub>2</sub> antagonist
- Diphenhydramine 25 mg to 50 mg orally or intravenously (or equivalent). The intravenous route is preferred for at least the first 4 infusions.

The above recommended dose of dexamethasone (orally or intravenously) corresponds to the dose to be administered before infusion as part of the premedication and part of the backbone treatment. Administer dexamethasone before SARCLISA and pomalidomide, before SARCLISA and carfilzomib, and before SARCLISA, bortezomib, and lenalidomide administration.

Administer the recommended premedication agents 15 to 60 minutes prior to starting a SARCLISA infusion.

### Recommended Antimicrobial Prophylaxis

Initiate antibacterial and antiviral prophylaxis (such as herpes zoster prophylaxis) if needed based on standard guidelines [*see Warnings and Precautions (5.2)*].

## **2.3 Dosage Modifications**

No dose reduction of SARCLISA is recommended. Dose delay may be required to allow recovery of blood counts in the event of hematological toxicity [*see Warnings and Precautions*].

(5.3, 5.5)]. For information concerning drugs given in combination with SARCLISA, see manufacturer's prescribing information.

## 2.4 Preparation

Prepare the solution for infusion using aseptic technique as follows:

Calculate the dose (mg) of required SARCLISA based on actual patient weight (measured prior to each cycle to have the administered dose adjusted accordingly) [see *Dosage and Administration (2.1)*]. More than one SARCLISA vial may be necessary to obtain the required dose for the patient.

- Parenteral drug products should be inspected visually for particulate matter and discoloration prior to administration, whenever solution and container permit.
- Remove the volume of diluent from the 250 mL Sodium Chloride Injection, or 5% Dextrose Injection, diluent bag that is equal to the required volume of SARCLISA injection.
- Withdraw the necessary volume of SARCLISA injection from the vial and dilute by adding to the infusion bag of 0.9% Sodium Chloride Injection, or 5% Dextrose Injection. Discard any unused portion left in the vial.
- The infusion bag must be made of polyolefins (PO), polyethylene (PE), polypropylene (PP), polyvinyl chloride (PVC) with di-(2-ethylhexyl) phthalate (DEHP) or ethyl vinyl acetate (EVA).
- Gently homogenize the diluted solution by inverting the bag. Do not shake.

## 2.5 Administration

- Administer the infusion solution by intravenous infusion using an intravenous tubing infusion set (in PE, PVC with or without DEHP, polybutadiene [PBD], or polyurethane [PU]) with a 0.22 micron in-line filter (polyethersulfone [PES], polysulfone, or nylon).
- The infusion solution should be administered for a period of time that will depend on the infusion rate (see Table 3). Use prepared SARCLISA infusion solution within 48 hours when stored refrigerated at 2°C to 8°C, followed by 8 hours (including the infusion time) at room temperature.
- Do not administer SARCLISA infusion solution concomitantly in the same intravenous line with other agents.
- On the days where both SARCLISA and carfilzomib are administered, administer dexamethasone first, followed by SARCLISA infusion, then followed by carfilzomib infusion.

### Infusion Rates

Following dilution, administer the SARCLISA infusion solution intravenously at the infusion rates presented in Table 3. Incremental escalation of the infusion rate should be considered only in the absence of infusion-related reactions [see *Warnings and Precautions (5.1)* and *Adverse Reactions (6.1)*].

**Table 3: Infusion Rates of SARCLISA Administration**

	<b>Dilution Volume</b>	<b>Initial Rate</b>	<b>Absence of Infusion-Related Reaction</b>	<b>Rate Increment</b>	<b>Maximum Rate</b>
First infusion	250 mL	25 mL/hour	For 60 minutes	25 mL/hour every 30 minutes	150 mL/hour
Second infusion	250 mL	50 mL/hour	For 30 minutes	50 mL/hour for 30 minutes then increase by 100 mL/hour	200 mL/hour
Subsequent infusions	250 mL	200 mL/hour	–	–	200 mL/hour

### 3 DOSAGE FORMS AND STRENGTHS

SARCLISA is a clear to slightly opalescent, colorless to slightly yellow solution, essentially free of visible particulates available as:

- Injection: 100 mg/5 mL (20 mg/mL) in a single-dose vial
- Injection: 500 mg/25 mL (20 mg/mL) in a single-dose vial

### 4 CONTRAINDICATIONS

SARCLISA is contraindicated in patients with severe hypersensitivity to isatuximab-irfc or to any of its excipients [see *Warnings and Precautions (5.1)*].

### 5 WARNINGS AND PRECAUTIONS

#### 5.1 Infusion-Related Reactions

SARCLISA can cause severe and/or serious infusion-related reactions including anaphylactic reactions. These reactions can be life-threatening and fatal outcomes have been reported [see *Adverse Reactions (6.2)*]. Severe signs and symptoms included cardiac arrest, hypertension, hypotension, bronchospasm, dyspnea, angioedema, and swelling. In clinical trials (ICARIA-MM, IKEMA, and IMROZ), in patients treated with SARCLISA (N=592), infusion-related reactions occurred in 206 patients (35%). Among these 206 patients, 92% experienced infusion-related reactions during the first infusion and 12% after the first cycle. The most common symptoms ( $\geq 5\%$ ) of an infusion-related reaction included dyspnea and cough. Grade 1 infusion-related reactions were reported in 6% of patients, grade 2 in 28%, and grade 3 or 4 in 1.2%. Anaphylactic reactions occurred in less than 1% of patients. The total incidence of SARCLISA infusion interruptions was less than 1% and the incidence of patients with at least one SARCLISA infusion interruption due to infusion-related reactions was 26%. The median time to first SARCLISA infusion interruption was 61 minutes (range 4 to 240 minutes). SARCLISA was discontinued in 1% of patients due to infusion-related reactions.

To decrease the risk and severity of infusion-related reactions, premedicate patients prior to SARCLISA infusion with acetaminophen, H2 antagonists, diphenhydramine, or equivalent, and dexamethasone [see *Dosage and Administration (2.2)*].

Monitor vital signs frequently during the entire SARCLISA infusion. For patients with grade  $\geq 2$  reactions, interrupt SARCLISA infusion and provide appropriate medical management. For patients with grade 2 or grade 3 reactions, if symptoms improve to grade  $\leq 1$ , restart SARCLISA infusion at half of the initial infusion rate, with supportive care as needed, and closely monitor

patients. If symptoms do not recur after 30 minutes, the infusion rate may be increased to the initial rate, and then increased incrementally, as shown in Table 3 [see *Dosage and Administration (2.5)*]. In case symptoms do not improve to grade  $\leq 1$  after interruption of SARCLISA infusion, persist or worsen despite appropriate medications, or require hospitalization, permanently discontinue SARCLISA and institute appropriate management. Permanently discontinue SARCLISA if an anaphylactic reaction or life-threatening (grade 4) infusion-related reaction occurs and institute appropriate management.

## 5.2 Infections

SARCLISA can cause severe, life-threatening, or fatal infections. In patients who received SARCLISA at the recommended dose in ICARIA-MM, IKEMA, and IMROZ (N=592), serious infections, including opportunistic infections, occurred in 46% of patients, grade 3 or 4 infections occurred in 43%, and fatal infections occurred in 4.7%. The most common type of serious infection reported was pneumonia (32%).

Monitor patients for signs and symptoms of infection prior to and during treatment with SARCLISA and treat appropriately. Administer prophylactic antimicrobials according to guidelines [see *Dosage and Administration (2.2)*].

## 5.3 Neutropenia

SARCLISA can cause neutropenia.

In clinical trials (ICARIA-MM, IKEMA, and IMROZ), in patients treated with SARCLISA (N=592), neutropenia based on laboratory values occurred in 81%, with grade 3 or 4 occurring in 52%. Neutropenic infections occurred in 12% of patients, with grade 3 or 4 in 4.9%, and febrile neutropenia in 4% [see *Adverse Reactions (6.1)*].

Monitor complete blood cell counts periodically during treatment. If needed, use antibacterial and antiviral prophylaxis during treatment [see *Dosage and Administration (2.2)*]. Monitor patients with neutropenia for signs of infection. In case of grade 4 neutropenia delay SARCLISA dose until neutrophil count recovery to at least  $1 \times 10^9/L$ , and provide supportive care with growth factors, according to institutional guidelines. No dose reductions of SARCLISA are recommended.

## 5.4 Second Primary Malignancies

The incidence of second primary malignancies, during treatment and post-treatment, is increased in patients treated with SARCLISA-containing regimens. In clinical trials (ICARIA-MM, IKEMA, and IMROZ), in patients treated with SARCLISA (N=592), second primary malignancies occurred in 71 patients (12%).

In ICARIA-MM, at a median follow-up time of 52 months, second primary malignancies occurred in 7% of patients in the Isa-Pd arm and in 2% of patients in the Pd arm.

In IKEMA study, at a median follow-up time of 57 months, second primary malignancies occurred in 10% of patients in the Isa-Kd arm and in 8% of patients in the Kd arm.

In IMROZ study, at a median follow-up time of 60 months, second primary malignancies occurred in 16% of patients in the Isa-VRd arm and in 9% of patients in the VRd arm.

The most common ( $\geq 1\%$ ) second primary malignancies in ICARIA-MM, IKEMA, and IMROZ (N=592) included skin cancers (7% with SARCLISA-containing regimens and 3.1% with comparative regimens) and solid tumors other than skin cancer (4.6% with SARCLISA-containing regimens and 2.9% with comparative regimens). Patients with non-melanoma skin cancer continued treatment after resection of the skin cancer, except 2 patients on the Isa-VRd arm and 1 patient on the VRd arm of the IMROZ study.

Monitor patients for the development of second primary malignancies.

## 5.5 Laboratory Test Interference

### Interference with Serological Testing (Indirect Antiglobulin Test)

SARCLISA binds to CD38 on red blood cells (RBCs) and may result in a false positive indirect antiglobulin test (indirect Coombs test). This interference with the indirect Coombs test may persist for approximately 6 months after the last infusion of SARCLISA. The indirect antiglobulin test was positive during Isa-Pd treatment in 68% of the tested patients, and during Isa-Kd treatment in 63% of patients. In patients with a positive indirect antiglobulin test, blood transfusions were administered without evidence of hemolysis. ABO/RhD typing was not affected by SARCLISA treatment.

Before the first SARCLISA infusion, conduct blood type and screen tests on SARCLISA-treated patients. Consider phenotyping prior to starting SARCLISA treatment. If treatment with SARCLISA has already started, inform the blood bank that the patient is receiving SARCLISA and SARCLISA interference with blood compatibility testing can be resolved using dithiothreitol-treated RBCs. If an emergency transfusion is required, non-cross-matched ABO/RhD-compatible RBCs can be given as per local blood bank practices [*see Drug Interactions (7.1)*].

### Interference with Serum Protein Electrophoresis and Immunofixation Tests

SARCLISA is an IgG kappa monoclonal antibody that can be incidentally detected on both serum protein electrophoresis and immunofixation assays used for the clinical monitoring of endogenous M-protein. This interference can impact the accuracy of the determination of complete response in some patients with IgG kappa myeloma protein [*see Drug Interactions (7.1)*].

## 5.6 Embryo-Fetal Toxicity

Based on the mechanism of action, SARCLISA can cause fetal harm when administered to a pregnant woman. SARCLISA may cause fetal immune cell depletion and decreased bone density. Advise pregnant women of the potential risk to a fetus. Advise females with reproductive potential to use an effective method of contraception during treatment with SARCLISA and for 5 months after the last dose [*see Use in Specific Populations (8.1, 8.3)*]. The combination of SARCLISA with pomalidomide or lenalidomide is contraindicated in pregnant women because pomalidomide or lenalidomide may cause birth defects and death of the unborn child. Refer to the pomalidomide or lenalidomide prescribing information on use during pregnancy.

## 6 ADVERSE REACTIONS

The following clinically significant adverse reactions from SARCLISA are also described in other sections of the labeling:

- Infusion-Related Reactions [see *Warnings and Precautions (5.1)*]
- Infections [see *Warnings and Precautions (5.2)*]
- Neutropenia [see *Warnings and Precautions (5.3)*]
- Second Primary Malignancies [see *Warnings and Precautions (5.4)*]

### 6.1 Clinical Trials Experience

Because clinical trials are conducted under widely varying conditions, adverse reaction rates observed in the clinical trials of a drug cannot be directly compared to rates in the clinical trials of another drug and may not reflect the rates observed in practice.

#### Relapsed and/or Refractory Multiple Myeloma

Combination treatment with pomalidomide and dexamethasone (Isa-Pd)

The safety of SARCLISA was evaluated in ICARIA-MM, a randomized, open-label clinical trial in patients with previously treated multiple myeloma. Patients received SARCLISA 10 mg/kg intravenously, weekly in the first cycle and every two weeks thereafter, in combination with pomalidomide and dexamethasone (Isa-Pd) (n=152) or pomalidomide and dexamethasone (Pd) (n=149) [see *Clinical Studies (14)*]. Among patients receiving Isa-Pd, 66% were exposed to SARCLISA for 6 months or longer and 24% were exposed for greater than 12 months or longer.

Serious adverse reactions occurred in 62% of patients receiving Isa-Pd. Serious adverse reactions in >5% of patients who received Isa-Pd included pneumonia (26%), upper respiratory tract infections (7%), and febrile neutropenia (7%). Fatal adverse reactions occurred in 11% of patients (those that occurred in more than 1% of patients were pneumonia and other infections [3%]).

Permanent treatment discontinuation due to an adverse reaction (grades 1-4) occurred in 7% of patients who received Isa-Pd. The most frequent adverse reactions requiring permanent discontinuation in patients who received Isa-Pd were infections (2.6%). SARCLISA alone was discontinued in 3% of patients due to infusion-related reactions.

Dosage interruptions due to an adverse reaction occurred in 31% of patients who received SARCLISA. The most frequent adverse reaction requiring dosage interruption was infusion-related reaction (28%).

The most common adverse reactions ( $\geq 20\%$ ) were upper respiratory tract infection, infusion-related reactions, pneumonia, and diarrhea.

Table 4 summarizes the adverse reactions in ICARIA-MM.

**Table 4: Adverse Reactions (≥10%) in Patients Receiving SARCLISA, Pomalidomide, and Dexamethasone with a Difference Between Arms of ≥5% Compared to Control Arm in ICARIA-MM Trial**

Adverse Reactions	SARCLISA + Pomalidomide + Dexamethasone (Isa-Pd) (N=152)			Pomalidomide + Dexamethasone (Pd) (N=149)		
	All Grades (%)	Grade 3 (%)	Grade 4 (%)	All Grades (%)	Grade 3 (%)	Grade 4 (%)
<b>General disorders and administration site conditions</b>						
Infusion-related reaction <sup>a</sup>	38	1.3	1.3	0	0	0
<b>Infections</b>						
Upper respiratory tract infection <sup>b</sup>	57	9	0	42	3.4	0
Pneumonia <sup>c</sup>	31	22	3.3	23	16	2.7
<b>Blood and lymphatic system disorders</b>						
Febrile neutropenia	12	11	1.3	2	1.3	0.7
<b>Respiratory, thoracic and mediastinal disorders</b>						
Dyspnea <sup>d</sup>	17	5	0	12	1.3	0
<b>Gastrointestinal disorders</b>						
Diarrhea	26	2	0	19	0.7	0
Nausea	15	0	0	9	0	0
Vomiting	12	1.3	0	3.4	0	0

CTCAE version 4.03

<sup>a</sup> Infusion-related reaction includes infusion-related reaction, cytokine release syndrome, and drug hypersensitivity.

<sup>b</sup> Upper respiratory tract infection includes bronchiolitis, bronchitis, bronchitis viral, chronic sinusitis, fungal pharyngitis, influenza-like illness, laryngitis, nasopharyngitis, parainfluenzae virus infection, pharyngitis, respiratory tract infection, respiratory tract infection viral, rhinitis, sinusitis, tracheitis, upper respiratory tract infection, and upper respiratory tract infection bacterial.

<sup>c</sup> Pneumonia includes atypical pneumonia, bronchopulmonary aspergillosis, pneumonia, pneumonia haemophilus, pneumonia influenzal, pneumonia pneumococcal, pneumonia streptococcal, pneumonia viral, candida pneumonia, pneumonia bacterial, haemophilus infection, lung infection, pneumonia fungal, and pneumocystis jirovecii pneumonia.

<sup>d</sup> Dyspnea includes dyspnea, dyspnea exertional, and dyspnea at rest.

Table 5 summarizes the hematology laboratory abnormalities in ICARIA-MM.

**Table 5: Hematology Laboratory Abnormalities During the Treatment Period in Patients Receiving Isa-Pd versus Pd in ICARIA-MM**

Laboratory Parameter	SARCLISA + Pomalidomide + Dexamethasone (Isa-Pd) (N=152)			Pomalidomide + Dexamethasone (Pd) (N=149)		
	All Grades (%)	Grade 3 (%)	Grade 4 (%)	All Grades (%)	Grade 3 (%)	Grade 4 (%)
Hemoglobin decreased	99	32	0	97	28	0
Neutrophils decreased	96	24	61	92	38	31
Lymphocytes decreased	92	42	13	92	35	8
Platelets decreased	84	14	16	79	9	15

The denominator used to calculate the percentages was based on the safety population.

## Combination treatment with carfilzomib and dexamethasone (Isa-Kd)

The safety of SARCLISA was evaluated in IKEMA, a randomized, open-label clinical trial in patients with previously treated multiple myeloma. Patients received SARCLISA 10 mg/kg intravenously weekly in the first cycle, and every two weeks thereafter, in combination with carfilzomib and dexamethasone (Isa-Kd) (n=177) or carfilzomib and dexamethasone (Kd) (n=122) [see *Clinical Studies (14)*]. Among patients receiving Isa-Kd, 68% were exposed to SARCLISA for 12 months or longer and 51% were exposed for greater than 18 months.

Serious adverse reactions occurred in 59% of patients receiving Isa-Kd. The most frequent serious adverse reactions in >5% of patients who received Isa-Kd were pneumonia (25%) and upper respiratory tract infections (9%). Adverse reactions with a fatal outcome during treatment were reported in 3.4% of patients in the Isa-Kd group (those occurring in more than 1% of patients were pneumonia occurring in 1.7% and cardiac failure in 1.1% of patients).

Permanent treatment discontinuation due to an adverse reaction (grades 1-4) occurred in 8% of patients who received Isa-Kd. The most frequent adverse reactions requiring permanent discontinuation in patients who received Isa-Kd were infections (2.8%). SARCLISA alone was discontinued in 0.6% of patients due to infusion-related reactions.

Dosage interruptions due to an adverse reaction occurred in 33% of patients who received SARCLISA. The most frequent adverse reaction requiring dosage interruption was infusion-related reaction (30%).

The most common adverse reactions ( $\geq 20\%$ ) were upper respiratory tract infection, infusion-related reactions, fatigue, hypertension, diarrhea, pneumonia, dyspnea, insomnia, bronchitis, cough, and back pain.

Table 6 summarizes the adverse reactions in IKEMA.

**Table 6: Adverse Reactions ( $\geq 10\%$ ) in Patients Receiving SARCLISA, Carfilzomib, and Dexamethasone with a Difference Between Arms of  $\geq 5\%$  Compared to Control Arm in IKEMA**

Adverse Reactions	SARCLISA + Carfilzomib + Dexamethasone (Isa-Kd) (N=177)			Carfilzomib + Dexamethasone (Kd) (N=122)		
	All Grades (%)	Grade 3 (%)	Grade 4 (%)	All Grades (%)	Grade 3 (%)	Grade 4 (%)
<b>General disorders and administration site conditions</b>						
Infusion-related reaction <sup>a</sup>	46	0.6	0	3.3	0	0
Fatigue <sup>b</sup>	42	5	0	32	3.3	0
<b>Infections</b>						
Upper respiratory tract infection <sup>c</sup>	67	9	0	57	7	0
Pneumonia <sup>d</sup>	36	19	3.4	30	15	2.5
Bronchitis <sup>e</sup>	24	2.3	0	13	0.8	0
<b>Vascular disorders</b>						
Hypertension <sup>f</sup>	37	20	0.6	32	18	1.6
<b>Respiratory, thoracic and mediastinal disorders</b>						

Adverse Reactions	SARCLISA + Carfilzomib + Dexamethasone (Isa-Kd) (N=177)			Carfilzomib + Dexamethasone (Kd) (N=122)		
	All Grades (%)	Grade 3 (%)	Grade 4 (%)	All Grades (%)	Grade 3 (%)	Grade 4 (%)
Dyspnea <sup>g</sup>	29	5	0	24	0.8	0
Cough <sup>h</sup>	23	0	0	15	0	0
<b>Gastrointestinal disorders</b>						
Diarrhea	36	2.8	0	29	2.5	0
Vomiting	15	1.1	0	9	0.8	0

<sup>a</sup> Infusion-related reaction includes infusion-related reaction, cytokine release syndrome, and hypersensitivity.

<sup>b</sup> Fatigue includes fatigue and asthenia.

<sup>c</sup> Upper respiratory tract infection includes acute sinusitis, chronic sinusitis, H1N1 influenza, H3N2 influenza, influenza, laryngitis, laryngitis viral, nasal herpes, nasopharyngitis, pharyngitis, pharyngotonsillitis, respiratory syncytial virus infection, rhinitis, sinusitis, sinusitis bacterial, tonsillitis, tracheitis, upper respiratory tract infection, viral rhinitis, respiratory tract infection, respiratory tract infection viral, influenza like illness, parainfluenzae virus infection, respiratory tract infection bacterial, and viral upper respiratory tract infection.

<sup>d</sup> Pneumonia includes atypical pneumonia, lower respiratory tract infection, lower respiratory tract infection viral, pneumocystis jirovecii pneumonia, pneumonia, pneumonia influenzal, pneumonia legionella, pneumonia pneumococcal, pneumonia respiratory syncytial viral, pneumonia streptococcal, pneumonia viral, pulmonary sepsis, and pulmonary tuberculosis.

<sup>e</sup> Bronchitis includes bronchitis, bronchitis viral, respiratory syncytial virus bronchitis, bronchitis chronic, and tracheobronchitis.

<sup>f</sup> Hypertension includes hypertension, blood pressure increased, and hypertensive crisis.

<sup>g</sup> Dyspnea includes dyspnea and dyspnea exertional.

<sup>h</sup> Cough includes cough, productive cough, and allergic cough.

Table 7 summarizes the hematology laboratory abnormalities in IKEMA.

**Table 7: Hematology Laboratory Abnormalities During the Treatment Period in Patients Receiving Isa-Kd versus Kd in IKEMA**

Laboratory Parameter	SARCLISA + Carfilzomib + Dexamethasone (Isa-Kd) (N=177)			Carfilzomib + Dexamethasone (Kd) (N=122)		
	All Grades (%)	Grade 3 (%)	Grade 4 (%)	All Grades (%)	Grade 3 (%)	Grade 4 (%)
Hemoglobin decreased	99	22	0	99	20	0
Lymphocytes decreased	94	52	17	95	43	14
Platelets decreased	94	19	11	88	16	8
Neutrophils decreased	55	18	1.7	43	7	0.8

The denominator used to calculate the percentage was based on the safety population.

### Newly Diagnosed Multiple Myeloma not Eligible for Autologous Stem Cell Transplant

#### *Combination treatment with bortezomib, lenalidomide, and dexamethasone (Isa-VRd)*

The safety of SARCLISA was evaluated in IMROZ, a randomized, open-label clinical trial in patients with newly diagnosed multiple myeloma. Patients received SARCLISA 10 mg/kg intravenously on day 1, 8, 15, 22, and 29 in the first 42-day cycle, followed by every two weeks from cycle 2 to 4 (42-day cycles), followed by every two weeks from cycle 5 to 17 (28-day

cycles), and then on day 1 from cycle 18 and onwards (28-day cycles), in combination with bortezomib, lenalidomide, and dexamethasone (Isa-VRd) (n=263) or bortezomib, lenalidomide, and dexamethasone (VRd) (n= 181) [see *Clinical Studies (14)*]. In IMROZ, median duration of exposure to treatment was 53 (range: 0.5-69) months in patients treated with Isa-VRd and 31 (range 0.6-67) months in patients treated with VRd.

Serious adverse reactions occurred in 71% of patients receiving Isa-VRd. The serious adverse reaction in > 5% of patients who received Isa-VRd was pneumonia (30%). Fatal adverse reactions occurred in 11% of patients with Isa-VRd (those occurring in more than 1% of patients were pneumonia (5%).

Permanent discontinuation of treatment due to an adverse reaction occurred in 22.8% of patients treated with Isa-VRd. The most frequent adverse reactions requiring permanent discontinuation in patients who received Isa-VRd were infections (8%). SARCLISA alone was discontinued in 2.3% of patients.

Dosage interruptions due to an adverse reaction occurred in 21% of patients who received SARCLISA. The most frequent adverse reaction requiring dosage interruption was infusion related reaction (21%).

The most common adverse reactions ( $\geq 20\%$ ) were upper respiratory tract infections, diarrhea, fatigue, peripheral sensory neuropathy, pneumonia, musculoskeletal pain, cataract, constipation, peripheral edema, rash, infusion-related reaction, insomnia, and COVID-19. The most common hematologic laboratory abnormalities ( $\geq 80\%$ ) were decreased hemoglobin, decreased leukocytes, decreased lymphocytes, decreased platelets, and decreased neutrophils.

Table 8 summarizes the adverse reactions in IMROZ.

**Table 8: Adverse Reactions ( $\geq 20\%$ ) in Patients Receiving SARCLISA, Bortezomib, Lenalidomide, and Dexamethasone in IMROZ**

Adverse Reactions	IMROZ study			
	SARCLISA + Bortezomib + Lenalidomide + Dexamethasone (N=263)		Bortezomib + Lenalidomide + Dexamethasone (N=181)	
	All Grades (%)	Grade 3 or 4 (%)	All Grades (%)	Grade 3 or 4 (%)
<b>Infections and infestations</b>				
Upper respiratory tract infection*	65	4.6	57 <sup>a</sup>	6
Pneumonia <sup>b</sup>	45 <sup>c</sup>	26	31 <sup>d</sup>	19
COVID-19 <sup>e</sup>	22	0.8	17 <sup>f</sup>	1.7

	IMROZ study			
Adverse Reactions	SARCLISA + Bortezomib + Lenalidomide + Dexamethasone (N=263)		Bortezomib + Lenalidomide + Dexamethasone (N=181)	
	All Grades (%)	Grade 3 or 4 (%)	All Grades (%)	Grade 3 or 4 (%)
<b>General disorders and administration site conditions</b>				
Fatigue <sup>g</sup>	55	11	50	9
Edema peripheral	33	0	33	1.1
Infusion-related reaction	24	0.4	1.1	0
<b>Gastrointestinal disorders</b>				
Diarrhea	55	8	49	8
Constipation	36	2.3	41	1.7
<b>Nervous system disorders</b>				
Peripheral sensory neuropathy	54	7	61	6
<b>Eye disorders</b>				
Cataract	38	16	25	11
<b>Musculoskeletal and connective tissue disorders</b>				
Musculoskeletal pain*	38	4.2	33	3.3
<b>Skin and subcutaneous tissue disorders</b>				
Rash <sup>h</sup>	32	5	34	5
<b>Psychiatric disorders</b>				
Insomnia	22	3.8	24	2.2

\*Includes other related terms

<sup>a</sup> Includes 1 patient (0.6%) with fatal URTI.

<sup>b</sup> Pneumonia includes Atypical pneumonia, Bronchopulmonary aspergillosis, COVID-19 pneumonia, Lower respiratory tract infection, Pneumocystis jirovecii pneumonia, Pneumonia, Pneumonia aspiration, Pneumonia bacterial, Pneumonia influenzal, Pneumonia klebsiella, Pneumonia legionella, Pneumonia parainfluenzae viral, Pneumonia pneumococcal, Pneumonia pseudomonas, Pneumonia respiratory syncytial viral, Pneumonia viral, Pulmonary sepsis.

<sup>c</sup> Includes 14 patients (5%) with fatal pneumonia.

<sup>d</sup> Includes 4 patients (2.2%) with fatal pneumonia.

<sup>e</sup> COVID-19 includes COVID-19 infections other than COVID-19 pneumonia.

<sup>f</sup> Includes 2 patients (1.1%) with fatal COVID-19.

<sup>g</sup> Fatigue includes Fatigue, Asthenia, or Malaise.

<sup>h</sup> Rash includes Dermatitis, Dermatitis acneiform, Dermatitis allergic, Dermatitis atopic, Dermatitis exfoliative generalized, Drug eruption, Rash, Rash erythematous, Rash macular, Rash maculo-papular, Rash pruritic, Rash pustular, Skin exfoliation, Skin hyperpigmentation, Skin lesion, Skin reaction, and Toxic skin eruption.

Table 9 summarizes the hematology laboratory abnormalities in IMROZ.

**Table 9: Hematology Laboratory Abnormalities During the Treatment Period in Patients Receiving Isa-VRd Versus VRd in IMROZ**

Laboratory parameter	SARCLISA + Bortezomib + Lenalidomide + Dexamethasone <sup>1</sup>		Bortezomib + Lenalidomide + Dexamethasone <sup>1</sup>	
	All Grades (%)	Grade 3-4 (%)	All Grades (%)	Grade 3-4 (%)
Decreased hemoglobin	99	17	98	16
Decreased leukocytes	97	32	88	17
Decreased lymphocytes	95	60	92	53
Decreased platelets	95	30	85	28
Decreased neutrophils	87	54	80	37

<sup>1</sup>The denominator used to calculate the rate is based on the number of patients with a baseline value and at least one post-baseline value.

### Description of Selected Adverse Reactions

#### Cardiac failure

In IKEMA, cardiac failure (including cardiac failure, cardiac failure congestive, cardiac failure acute, cardiac failure chronic, left ventricular failure, and pulmonary edema) was reported in 7% of patients with the Isa-Kd group (grade  $\geq 3$  in 4%) and in 7% of patients with the Kd group (grade  $\geq 3$  in 4.1%). Serious cardiac failure was observed in 4% of patients in the Isa-Kd group and in 3.3% of patients in the Kd group. See the current prescribing information for carfilzomib for more information.

### 6.2 Postmarketing Experience

The following adverse reactions have been identified with postapproval use of SARCLISA. Because these reactions are reported voluntarily from a population of uncertain size, it is not always possible to reliably estimate their frequency or establish a causal relationship to drug exposure.

*Immune System Disorders:* Anaphylactic reactions including fatal cases.

## 7 DRUG INTERACTIONS

### 7.1 Laboratory Test Interference

#### Interference with Serological Testing

SARCLISA, an anti-CD38 antibody, may interfere with blood bank serologic tests with false positive reactions in indirect antiglobulin tests (indirect Coombs tests), antibody detection (screening) tests, antibody identification panels, and antihuman globulin crossmatches in patients treated with SARCLISA [see *Warnings and Precautions* (5.5)].

#### Interference with Serum Protein Electrophoresis and Immunofixation Tests

SARCLISA may be incidentally detected by serum protein electrophoresis and immunofixation assays used for the monitoring of M-protein and may interfere with accurate response classification based on International Myeloma Working Group (IMWG) criteria [see *Warnings*

*and Precautions (5.5)]*. In patients with persistent very good partial response, where interference is suspected, consider using an FDA-cleared isatuximab-irfc-specific IFE assay to distinguish isatuximab from any remaining endogenous M protein in the patient's serum to facilitate determination of a complete response.

## **8 USE IN SPECIFIC POPULATIONS**

### **8.1 Pregnancy**

#### Risk Summary

SARCLISA can cause fetal harm when administered to a pregnant woman. The assessment of isatuximab-irfc-associated risks is based on the mechanism of action and data from target antigen CD38 knockout animal models (*see Data*). There are no available data on SARCLISA use in pregnant women to evaluate for a drug-associated risk of major birth defects, miscarriage or adverse maternal or fetal outcomes. Animal reproduction toxicity studies have not been conducted with isatuximab-irfc. The estimated background risk of major birth defects and miscarriage for the indicated population is unknown. All pregnancies have a background risk of birth defect, miscarriage, or other adverse outcomes. In the U.S. general population, the estimated background risk of major birth defects and miscarriage in clinically recognized pregnancies is 2% to 4% and 15% to 20%, respectively.

The combination of SARCLISA and pomalidomide or lenalidomide is contraindicated in pregnant women because pomalidomide and lenalidomide may cause birth defects and death of the unborn child. Refer to the pomalidomide or lenalidomide prescribing information on use during pregnancy. Pomalidomide and lenalidomide are only available through a REMS program.

#### Clinical Considerations

##### Fetal/neonatal reactions

Immunoglobulin G1 monoclonal antibodies are known to cross the placenta. Based on its mechanism of action, SARCLISA may cause depletion of fetal CD38-positive immune cells and decreased bone density. Defer administration of live vaccines to neonates and infants exposed to SARCLISA in utero until a hematology evaluation is completed.

#### Data

##### Animal data

Mice that were genetically modified to eliminate all CD38 expression (CD38 knockout mice) had reduced bone density which recovered 5 months after birth. Data from studies using CD38 knockout animal models also suggest the involvement of CD38 in regulating humoral immune responses (mice), feto-maternal immune tolerance (mice), and early embryonic development (frogs).

### **8.2 Lactation**

#### Risk Summary

There are no available data on the presence of isatuximab-irfc in human milk, milk production, or the effects on the breastfed child. Maternal immunoglobulin G is known to be present in human milk. The effects of local gastrointestinal exposure and limited systemic exposure in the breastfed infant to SARCLISA are unknown. Because of the potential for serious adverse

reactions in the breastfed child from isatuximab-irfc administered in combination with pomalidomide or lenalidomide and dexamethasone, advise lactating women not to breastfeed during treatment with SARCLISA. Refer to pomalidomide or lenalidomide prescribing information for additional information.

### **8.3 Females and Males of Reproductive Potential**

SARCLISA can cause fetal harm when administered to a pregnant woman [*see Use in Specific Populations (8.1)*].

#### **Pregnancy Testing**

With the combination of SARCLISA with pomalidomide or lenalidomide, refer to the pomalidomide or lenalidomide labeling for pregnancy testing requirements prior to initiating treatment in females of reproductive potential.

#### **Contraception**

##### **Females**

Advise female patients of reproductive potential to use effective contraception during treatment and for 5 months after the last dose of SARCLISA. Additionally, refer to the pomalidomide or lenalidomide labeling for contraception requirements prior to initiating treatment in females of reproductive potential.

##### **Males**

Refer to the pomalidomide or lenalidomide prescribing information.

### **8.4 Pediatric Use**

The safety and effectiveness of SARCLISA in pediatric patients have not been established.

The safety and efficacy of SARCLISA in combination with chemotherapy were assessed, but not established, in an open-label study (ACT15378, ISAKIDS, NCT03860844) in 62 pediatric patients aged 1.4 years to < 17 years with relapsed or refractory T-acute lymphoblastic leukemia (T-ALL), B-acute lymphoblastic leukemia (B-ALL), or acute myeloid leukemia (AML). No new safety signals were observed in pediatric patients in this trial.

Body weight adjusted clearance at steady state and volume of distribution of isatuximab in pediatric patients were within the range of values that were observed in adults.

### **8.5 Geriatric Use**

Of the total number of patients with relapsed or refractory multiple myeloma in clinical studies of SARCLISA, 56% (n=586) were 65 years of age and older, while 16% (n=163) were 75 years of age and older [*see Clinical Studies (14)*]. No overall differences in safety or effectiveness were observed between patients 65 years of age and older compared to younger patients, and other reported clinical experience has not identified differences in responses between the adults 65 years of age and older and younger patients, but greater sensitivity of some older individuals cannot be ruled out.

Of the total number of SARCLISA-treated patients with newly diagnosed multiple myeloma in IMROZ, 72% (n=319) were less than 75 years of age and 28% (n=125) were 75 years of age and older. The clinical trial did not enroll patients over age 80 [*see Clinical Studies (14)*]. Adverse

reactions occurring at a higher frequency in the SARCLISA arm ( $\geq 5\%$ ) in patients 75 years of age and older included neutropenia. Adverse reactions leading to dose modifications in patients 75 years of age and older occurred at a higher frequency ( $\geq 5\%$ ) in the SARCLISA arm. The hazard ratio for overall survival (OS) in patients 75 years of age and older was 1.25 [95% CI: 0.68 to 2.3].

## 11 DESCRIPTION

Isatuximab-irfc, a CD38-directed cytolytic antibody, is a chimeric immunoglobulin G1 (IgG1) monoclonal antibody (mAb). Isatuximab-irfc is produced from a mammalian cell line (Chinese hamster ovary, CHO) using a fed-batch production process. Isatuximab-irfc is composed of two identical immunoglobulin kappa light chains and two identical immunoglobulin gamma heavy chains and has an overall molecular weight of approximately 148 kDa.

SARCLISA (isatuximab-irfc) injection is a sterile, preservative-free, clear to slightly opalescent, colorless to slightly yellow solution, essentially free of visible particles in a single-dose vial for intravenous use. Each vial contains either 100 mg/5 mL or 500 mg/25 mL of isatuximab-irfc at a concentration of 20 mg/mL with a pH of 6.0. Each mL of solution contains 20 mg isatuximab-irfc, histidine (1.46 mg), histidine hydrochloride monohydrate (2.22 mg), polysorbate 80 (0.2 mg), sucrose (100 mg), and water for injection.

## 12 CLINICAL PHARMACOLOGY

### 12.1 Mechanism of Action

Isatuximab-irfc is an IgG1-derived monoclonal antibody that binds to CD38 expressed on the surface of hematopoietic and tumor cells, including multiple myeloma cells. Isatuximab-irfc induces apoptosis of tumor cells and activation of immune effector mechanisms including antibody-dependent cell-mediated cytotoxicity (ADCC), antibody-dependent cellular phagocytosis (ADCP), and complement dependent cytotoxicity (CDC). Isatuximab-irfc inhibits the ADP-ribosyl cyclase activity of CD38. Isatuximab-irfc can activate natural killer (NK) cells in the absence of CD38-positive target tumor cells and suppresses CD38-positive T-regulatory cells. The combination of isatuximab-irfc and pomalidomide enhanced ADCC activity and direct tumor cell killing compared to that of isatuximab-irfc alone *in vitro*, and enhanced antitumor activity compared to the activity of isatuximab-irfc or pomalidomide alone in a human multiple myeloma xenograft model.

### 12.2 Pharmacodynamics

In multiple myeloma patients treated with SARCLISA combined with pomalidomide and dexamethasone, a decrease in absolute counts of total NK cells (including inflammatory CD16<sup>+</sup> low CD56<sup>+</sup> bright and cytotoxic CD16<sup>+</sup> bright CD56<sup>+</sup> dim NK cells) and CD19<sup>+</sup> B cells was observed in peripheral blood.

#### Cardiac Electrophysiology

Up to 2 times the approved recommended dose, SARCLISA does not prolong the QT interval to any clinically relevant extent.

A relationship between isatuximab-irfc exposure and overall response rate and progression-free survival was observed.

No apparent relationship was observed between an increase of isatuximab-irfc exposure and adverse reactions.

### **12.3 Pharmacokinetics**

Following administration of isatuximab-irfc in combination with pomalidomide and dexamethasone at the recommended dose and schedule, the steady-state mean (CV%) predicted maximum plasma concentration ( $C_{max}$ ) and area under the plasma concentration-time curve (AUC) of isatuximab-irfc were 351  $\mu\text{g/mL}$  (36.0%) and 72,600  $\mu\text{g}\cdot\text{h/mL}$  (51.7%), respectively.

Following administration of isatuximab-irfc in combination with carfilzomib and dexamethasone at the recommended dose and schedule, the steady state mean (CV%) predicted  $C_{max}$  and AUC of isatuximab-irfc were 655  $\mu\text{g/mL}$  (30.8%) and 159,000  $\mu\text{g}\cdot\text{h/mL}$  (37.1%), respectively.

The median time to reach steady state of isatuximab-irfc was 18 weeks with a 3.1-fold accumulation.

Following administration of isatuximab-irfc in combination with bortezomib, lenalidomide, and dexamethasone at the recommended dose and schedule, the mean (CV%) predicted  $C_{max}$  and AUC of isatuximab-irfc after the dose on Week 21 were 496  $\mu\text{g/mL}$  (25.6%) and 120,000  $\mu\text{g}\cdot\text{h/mL}$  (28.9%), respectively. The geometric mean (CV%) of accumulation ratio between steady state AUC and AUC after the dose on Week 21 is predicted to be 1.4 (35.8%).

Isatuximab-irfc AUC increases in a greater than dose proportional manner over a dosage range from 1 mg/kg to 20 mg/kg (0.1 to 2 times the approved recommended dosage) every 2 weeks. Isatuximab-irfc AUC increases proportionally over a dosage range from 5 mg/kg to 20 mg/kg (0.5 to 2 times the approved recommended dosage) every week for 4 weeks followed by every 2 weeks.

#### Distribution

The mean (CV%) predicted total volume of distribution of isatuximab-irfc is of 8.13 L (26.2%).

#### Metabolism

Isatuximab-irfc is expected to be metabolized into small peptides by catabolic pathways.

#### Elimination

Isatuximab-irfc total clearance decreased with increasing dose and with multiple doses. At steady state, the near elimination ( $\geq 99\%$ ) of isatuximab-irfc from plasma after the last dose is predicted to occur in approximately 2 months. The elimination of isatuximab-irfc was similar when given as a single agent or as combination therapy.

#### Specific Populations

The following factors have no clinically meaningful effect on the exposure of isatuximab-irfc: age (36 to 85 years, 70 patients were  $\geq 75$  years old), sex, renal impairment including patients with End-Stage Renal Disease (ESRD) or on dialysis (eGFR  $< 90$  mL/min/1.73 m<sup>2</sup>), and mild hepatic impairment (total bilirubin  $\leq$  upper limit of normal [ULN] and aspartate aminotransferase [AST]  $> \text{ULN}$ , or total bilirubin  $> 1$  to  $1.5 \times \text{ULN}$  and any AST). The effect of moderate (total bilirubin  $> 1.5$  to  $3 \times \text{ULN}$  and any AST) and severe (total bilirubin  $> 3 \times \text{ULN}$  and any AST) hepatic impairment on isatuximab-irfc pharmacokinetics is unknown.

No dose adjustments are recommended in these specific patient populations.

## Body weight

The clearance of isatuximab-irfc increased with increasing body weight.

## Race

White (n=377, 79%) or Asian (n=25, 5%) race have no clinically meaningful effect on the exposure of isatuximab-irfc. The effect of Black (n=18, 4%) race on the exposure of isatuximab-irfc is unknown.

## 12.6 Immunogenicity

The observed incidence of anti-drug antibodies is highly dependent on the sensitivity and specificity of the assay. Differences in assay methods preclude meaningful comparisons of the incidence of anti-drug antibodies in the studies described below with the incidence of anti-drug antibodies in other studies, including those of isatuximab-irfc or of other isatuximab products.

Overall, across 9 clinical studies in relapsed and/or refractory multiple myeloma (RRMM) with SARCLISA single-agent and combination therapies including ICARIA-MM and IKEMA (N=1023), the incidence of treatment emergent anti-drug antibodies (ADAs) was <2%. In ICARIA-MM and IKEMA, no patients with RRMM tested positive for ADA. Therefore, the neutralizing ADA status was not determined. In RRMM, no effect of ADAs was observed on the pharmacokinetics, safety, or efficacy of SARCLISA.

In IMROZ, out of the 263 patients with NDMM treated with SARCLISA in combination with bortezomib, lenalidomide, and dexamethasone, 253 were evaluable for the presence of ADA, 22 patients (8.7%) tested positive for treatment-emergent ADAs, with 21 patients considered to have a transient ADA response and 1 considered to have an indeterminate ADA response. Among these 22 ADA-positive patients, 13 (5.9%) had neutralizing antibodies. In IMROZ, a trend to lower exposure was observed in ADA-positive patients, which was considered not clinically relevant. In patients with ADA-positive status to SARCLISA, including those with neutralizing antibodies, no meaningful impact of ADAs on safety or efficacy of SARCLISA was observed.

## 13 NONCLINICAL TOXICOLOGY

### 13.1 Carcinogenesis, Mutagenesis, Impairment of Fertility

Carcinogenicity and genotoxicity studies have not been conducted with isatuximab-irfc. Fertility studies have not been conducted with isatuximab-irfc.

## 14 CLINICAL STUDIES

### Relapsed and/or Refractory Multiple Myeloma

#### ICARIA-MM

The efficacy and safety of SARCLISA in combination with pomalidomide and dexamethasone (Isa-Pd) were evaluated in ICARIA-MM (NCT02990338), a multicenter, multinational, randomized, open-label, 2-arm, phase 3 study in patients with relapsed and/or refractory multiple myeloma. Patients had received at least two prior therapies including lenalidomide and a proteasome inhibitor. Patients were eligible for inclusion if they had an Eastern Cooperative Oncology Group (ECOG) status of 0-2, platelets  $\geq 75,000$  cells/mm<sup>3</sup>, absolute neutrophil count

$\geq 1 \times 10^9/L$ , creatinine clearance  $\geq 30$  mL/min/1.73 m<sup>2</sup> (MDRD formula), AST  $\leq 3 \times$  ULN, and ALT  $\leq 3 \times$  ULN.

A total of 307 patients were randomized in a 1:1 ratio to receive either SARCLISA in combination with pomalidomide and dexamethasone (Isa-Pd, 154 patients) or pomalidomide and dexamethasone (Pd, 153 patients). Treatment was administered in both groups in 28-day cycles until disease progression or unacceptable toxicity. SARCLISA 10 mg/kg was administered as an intravenous infusion weekly in the first cycle and every two weeks thereafter. Pomalidomide 4 mg was taken orally once daily from day 1 to day 21 of each 28-day cycle. Dexamethasone (orally or intravenously) 40 mg (20 mg for patients  $\geq 75$  years of age) was given on days 1, 8, 15, and 22 for each 28-day cycle.

Overall, demographic and disease characteristics at baseline were similar between the two treatment groups. The median patient age was 67 years (range 36-86), 20% of patients were  $\geq 75$  years; 79% of patients were White, 12% Asian, and 1% Black or African American; 10% of patients entered the study with a history of COPD or asthma. The proportion of patients with renal impairment (creatinine clearance  $< 60$  mL/min/1.73 m<sup>2</sup>) was 34%. The International Staging System (ISS) stage at study entry was I in 37%, II in 36% and III in 25% of patients. Overall, 20% of patients had high-risk chromosomal abnormalities at study entry; del(17p), t(4;14) and t(14;16) were present in 12%, 8% and 2% of patients, respectively.

The median number of prior lines of therapy was 3 (range 2-11). All patients received a prior proteasome inhibitor, all patients received prior lenalidomide, and 56% of patients received prior stem cell transplantation; the majority of patients (93%) were refractory to lenalidomide, 76% to a proteasome inhibitor, and 73% to both an immunomodulator and a proteasome inhibitor.

The median duration of treatment was 41 weeks for Isa-Pd group compared to 24 weeks for Pd group.

The efficacy of SARCLISA was based upon progression-free survival (PFS). PFS results were assessed by an Independent Response Committee based on central laboratory data for M-protein and central radiologic imaging review using the International Myeloma Working Group (IMWG) criteria. The improvement in PFS represented a 40% reduction in the risk of disease progression or death in patients treated with Isa-Pd.

Efficacy results are presented in Table 10 and Kaplan-Meier curve for PFS is provided in Figure 1.

**Table 10: Efficacy of SARCLISA in Combination with Pomalidomide and Dexamethasone versus Pomalidomide and Dexamethasone in the Treatment of Multiple Myeloma (ICARIA-MM)**

Endpoint	SARCLISA + Pomalidomide + Dexamethasone N=154	Pomalidomide + Dexamethasone N=153
<b>Progression-Free Survival</b>		
Median (months) [95% CI]	11.53 [8.94-13.9]	6.47 [4.47-8.28]
Hazard ratio <sup>a</sup> [95% CI]	0.596 [0.44-0.81]	
p-value <sup>a</sup> (stratified log-rank test)	0.0010	

Endpoint	SARCLISA + Pomalidomide + Dexamethasone N=154	Pomalidomide + Dexamethasone N=153
<b>Overall Response Rate<sup>b</sup></b>		
Responders (sCR+CR+VGPR+PR) n (%) [95% CI] <sup>c</sup>	93 (60.4) [52.2-68.2]	54 (35.3) [27.8-43.4]
p-value (stratified Cochran-Mantel-Haenszel) <sup>a</sup>	<0.0001	
Stringent Complete Response (sCR) + Complete Response (CR) n (%)	7 (4.5)	3 (2)
Very Good Partial Response (VGPR) n (%)	42 (27.3)	10 (6.5)
Partial Response (PR) n (%)	44 (28.6)	41 (26.8)

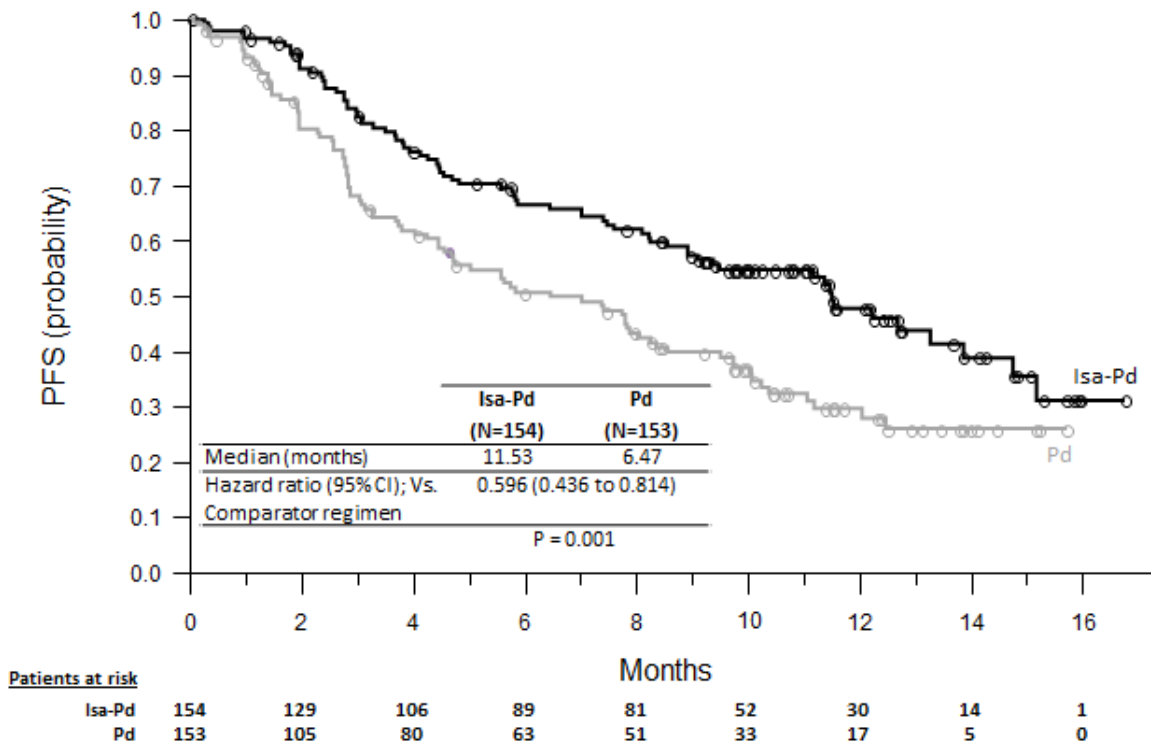
<sup>a</sup> Stratified-on age (<75 years versus ≥75 years) and number of previous lines of therapy (2 or 3 vs >3) according to IRT.

<sup>b</sup> sCR, CR, VGPR and PR were evaluated by the IRC using the IMWG response criteria.

<sup>c</sup> Estimated using Clopper-Pearson method.

The median time to first response in responders was 35 days in the Isa-Pd group versus 58 days in the Pd group. The median duration of response was 13.3 months (95% CI: 10.6-NR) in the Isa-Pd group versus 11.1 months (95% CI: 8.5-NR) in the Pd group. At a median follow-up time of 52.4 months, final median overall survival was 24.6 months in the Isa-Pd group and 17.7 months in the Pd group (HR=0.776; 95% CI: 0.594 to 1.015).

**Figure 1: Kaplan-Meier Curves of PFS – ITT Population – ICARIA-MM (assessment by the IRC)**



## IKEMA

The efficacy and safety of SARCLISA in combination with carfilzomib and dexamethasone were evaluated in IKEMA (NCT03275285), a multicenter, multinational, randomized, open-label, 2-arm, phase 3 study in patients with relapsed and/or refractory multiple myeloma. Patients had received one to three prior lines of therapy. Patients were eligible for inclusion if they had an ECOG status of 0-2, platelets  $\geq 50,000$  cells/mm<sup>3</sup>, absolute neutrophil count  $\geq 1 \times 10^9$ /L, creatinine clearance  $\geq 15$  mL/min/1.73 m<sup>2</sup> (MDRD formula), AST  $\leq 3 \times$  ULN, and ALT  $\leq 3 \times$  ULN.

A total of 302 patients were randomized in a 3:2 ratio to receive either SARCLISA in combination with carfilzomib and dexamethasone (Isa-Kd, 179 patients) or carfilzomib and dexamethasone (Kd, 123 patients). Treatment was administered in both groups in 28-day cycles until disease progression or unacceptable toxicity. SARCLISA 10 mg/kg was administered as an intravenous infusion weekly in the first cycle and every two weeks thereafter. Carfilzomib was administered as an intravenous infusion at the dose of 20 mg/m<sup>2</sup> on days 1 and 2; 56 mg/m<sup>2</sup> on days 8, 9, 15, and 16 of cycle 1; and at the dose of 56 mg/m<sup>2</sup> on days 1, 2, 8, 9, 15, and 16 for subsequent cycles of each 28-day cycle. Dexamethasone (intravenously on the days of isatuximab-irfc and/or carfilzomib infusions, and orally on the other days) 20 mg was given on days 1, 2, 8, 9, 15, 16, 22, and 23 for each 28-day cycle. On the days where both SARCLISA and carfilzomib were administered, dexamethasone was administered first, followed by SARCLISA infusion, then followed by carfilzomib infusion.

Overall, demographic and disease characteristics at baseline were similar between the two treatment groups. The median patient age was 64 years (range 33-90), 9% of patients were  $\geq 75$  years, 71% were White, 17% Asian, and 3% Black or African American. The proportion of patients with renal impairment (eGFR  $< 60$  mL/min/1.73 m<sup>2</sup>) was 24% in the Isa-Kd group versus 15% in the Kd group. The International Staging System (ISS) stage at study entry was I in 53%, II in 31%, and III in 15% of patients. Overall, 24% of patients had high-risk chromosomal abnormalities at study entry; del(17p), t(4;14), t(14;16) were present in 11%, 14%, and 2% of patients, respectively. In addition, gain(1q21) was present in 42% of patients.

The median number of prior lines of therapy was 2 (range 1-4) with 44% of patients who received 1 prior line of therapy. Overall, 90% of patients received prior proteasome inhibitors, 78% received prior immunomodulators (including 43% who received prior lenalidomide), and 61% received prior stem cell transplantation. Overall, 33% of patients were refractory to prior proteasome inhibitors, 45% were refractory to prior immunomodulators (including 33% refractory to lenalidomide), and 21% were refractory to both a proteasome inhibitor and an immunomodulator.

The median duration of treatment was 80 weeks for the Isa-Kd group compared to 61 weeks for the Kd group.

The efficacy of SARCLISA was based upon PFS. PFS results were assessed by an Independent Response Committee based on central laboratory data for M-protein and central radiologic imaging review using the IMWG criteria. The improvement in PFS represented a 45% reduction in the risk of disease progression or death in patients treated with Isa-Kd compared to patients treated with Kd.

Efficacy results are presented in Table 11 and Kaplan-Meier curves for PFS are provided in Figure 2.

**Table 11<sup>a,b</sup>: Efficacy of SARCLISA in Combination with Carfilzomib and Dexamethasone versus Carfilzomib and Dexamethasone in the Treatment of Multiple Myeloma (IKEMA)**

Endpoint	SARCLISA + Carfilzomib + Dexamethasone N=179	Carfilzomib + Dexamethasone N=123
<b>Progression-Free Survival<sup>c</sup></b>		
Median (months) [95% CI]	NR [NR- NR]	20.27 [15.77- NR]
Hazard ratio <sup>d</sup> [95% CI]	0.548 [0.366-0.822]	
p-value (stratified log-rank test) <sup>d</sup>	0.0032	
<b>Overall Response Rate<sup>c</sup></b>		
Responders (sCR+CR+VGPR+PR) n (%) [95% CI] <sup>f</sup>	155 (86.6) [80.7-91.2]	102 (82.9) [75.1-89.1]
p-value (stratified Cochran-Mantel-Haenszel) <sup>d</sup>	0.3859	
Complete Response (CR) n (%)	71 (39.7)	34 (27.6)
Very Good Partial Response (VGPR) n (%)	59 (33)	35 (28.5)
Partial Response (PR) n (%)	25 (14)	33 (26.8)

NR: not reached.

<sup>a</sup> Results are based on a prespecified interim analysis.

<sup>b</sup> Median follow-up time 20.7 months.

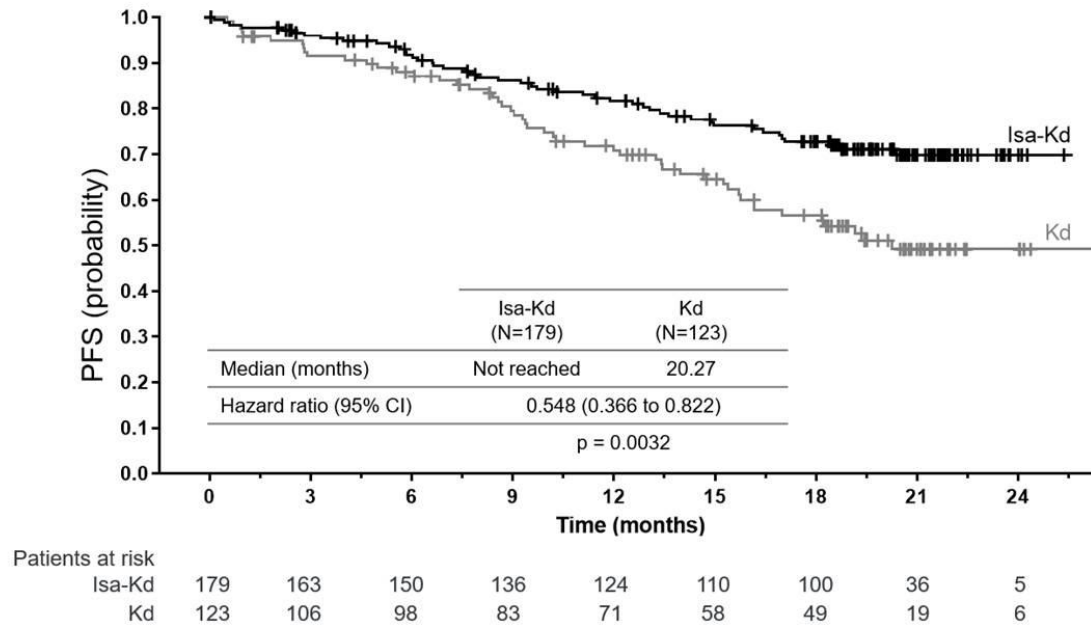
<sup>c</sup> PFS results were assessed by the IRC based on central laboratory data for M-protein and central radiologic imaging review using the IMWG criteria. A comparison is considered statistically significant if the p-value is <0.008 (efficacy boundary).

<sup>d</sup> Stratified on number of previous lines of therapy (1 versus >1) and R-ISS (I or II versus III versus not classified) according to IRT.

<sup>e</sup> sCR, CR, VGPR, and PR were evaluated by the IRC using the IMWG response criteria.

<sup>f</sup> Estimated using Clopper-Pearson method.

**Figure 2: Kaplan-Meier Curves of PFS – ITT Population – IKEMA (assessment by the IRC)**



At a median follow-up time of 44.0 months, final PFS analysis showed a median PFS of 41.7 months for Isa-Kd group compared to 20.8 months for Kd group, with a hazard ratio of 0.594 (95.4% CI: 0.424 to 0.832). Final complete response, determined using a FDA-cleared isatuximab-irfc-specific IFE assay [see Drug Interactions (7.1)], was 44.1% in Isa-Kd group compared to 28.5% in Kd group.

At a median follow-up time of 57 months, median overall survival was not reached in the Isa-Kd group (95% CI: 52.172-NR) and was 50.6 months in Kd group (95% CI: 38.932-NR) (HR=0.855; 95% CI: 0.608-1.202).

### Newly Diagnosed Multiple Myeloma

#### IMROZ

The efficacy of SARCLISA in combination with bortezomib, lenalidomide, and dexamethasone was evaluated in IMROZ (NCT03319667), a multicenter, international, randomized, open-label, 2-arm, phase 3 study in patients with newly diagnosed multiple myeloma who are not eligible for stem cell transplantation. Patients were eligible for inclusion if they had an Eastern Cooperative Oncology Group (ECOG) status of 0 or 1, platelets  $\geq 70,000$  cells/mm<sup>3</sup>, absolute neutrophil count  $\geq 1 \times 10^9$ /L, creatinine clearance  $\geq 30$  mL/min/1.73 m<sup>2</sup> (MDRD formula), AST  $\leq 3 \times$  ULN, and ALT  $\leq 3 \times$  ULN.

A total of 446 patients were randomized in a 3:2 ratio to receive either SARCLISA in combination with bortezomib, lenalidomide, and dexamethasone (Isa-VRd, 265 patients) or bortezomib, lenalidomide, and dexamethasone (VRd, 181 patients). Treatment was administered in both groups during 4 cycles of 42-days each for the induction period. After completion of cycle 4, patients entered the continuous treatment period starting from cycle 5, in which 28-day cycles were administered up to disease progression or unacceptable toxicity. During the continuous treatment period, patients of the Isa-VRd group received SARCLISA in combination with lenalidomide, and dexamethasone (Isa-Rd), and patients in the VRd group received

lenalidomide, and dexamethasone (Rd). During the induction period (cycle 1 to 4, 42-day cycles), SARCLISA 10 mg/kg was administered as an intravenous infusion on day 1, 8, 15, 22, and 29, in the first cycle and on day 1, 15, and 29, from cycle 2 to 4. Bortezomib was administered subcutaneously at the dose of 1.3 mg/m<sup>2</sup> on days 1, 4, 8, 11, 22, 25, 29, and 32 of each cycle. Lenalidomide was administered orally at the dose of 25 mg/day from day 1 to 14 and from day 22 to 35 of each cycle. Dexamethasone (intravenously on the days of SARCLISA infusions, and orally on the other days) 20 mg/day was given on days 1, 2, 4, 5, 8, 9, 11, 12, 15, 22, 23, 25, 26, 29, 30, 32, and 33 of each cycle. During the continuous treatment period (from cycle 5, 28-day cycles), SARCLISA 10 mg/kg was administered as an IV infusion on day 1 and 15 from cycle 5 to 17, and on day 1 from cycle 18. Lenalidomide was administered orally at the dose of 25 mg/day from day 1 to 21 of each cycle. Dexamethasone (intravenously on the days of SARCLISA infusions, and orally on the other days) 20 mg/day was given on days 1, 8, 15, and 22 of each cycle.

The median patient age was 72 years (range 55-80), 28% of patients were ≥75 years; 72% of patients were White, 11% Asian, and 0.9% Black or African American. The proportion of patients with renal impairment (eGFR<60 mL/min/1.73m<sup>2</sup>) was 29%. The Revised International Staging System (R-ISS) stage at study entry was I in 23%, II in 64%, and III in 10% of patients. Overall, 17% of patients had high-risk chromosomal abnormalities at study entry; del(17p), t(4;14), and t(14;16) were present in 5%, 9% and 2% of patients, respectively. In addition, 1q21+ was present in 37% of patients.

The efficacy of SARCLISA was established based upon progression-free survival (PFS). PFS results were assessed by an Independent Response Committee based on central laboratory data for M-protein and central radiologic imaging review using the International Myeloma Working Group (IMWG) criteria. The improvement in PFS represented a 40% reduction in the risk of disease progression or death in patients treated with Isa-VRd.

Efficacy results are presented in Table 12 and Kaplan-Meier curves for PFS are provided in Figure 3:

**Table 12 – Efficacy Results of SARCLISA in combination with bortezomib, lenalidomide, and dexamethasone versus bortezomib, lenalidomide, and dexamethasone (IMROZ)**

Endpoint	SARCLISA + Bortezomib + Lenalidomide + Dexamethasone N =265	Bortezomib + Lenalidomide + Dexamethasone N = 181
<b>Progression-Free Survival<sup>a</sup></b>		
Median (months) [95% CI]	NR [NR-NR]	54.34 [45.21-NR]
Hazard ratio <sup>b</sup> [95% CI]	0.60 [0.44-0.81]	
p-value (Stratified Log-Rank test) <sup>bc</sup>	0.0009	
<b>Overall Response Rate<sup>ad</sup></b>		

Responders (sCR+CR+VGPR+PR) N(%) [95% CI] <sup>e</sup>	242 (91) [87-94]	167 (92) [87-96]
Stringent Complete Response (sCR) N(%)	29 (11)	10 (6)
Complete Response (CR) N(%)	169 (64)	106 (59)
Very Good Partial Response (VGPR) N(%)	38 (14)	34 (19)
Partial Response (PR) N(%)	6 (2.3)	17 (9)
CR or better (sCR and CR) <sup>f</sup> N(%) [95% CI] <sup>e</sup>	198 (75) [69-80]	116 (64) [57-71]
p-value (Stratified Cochran-Mantel-Haenszel) <sup>b</sup>	0.0160	
<b>Minimal Residual Disease (MRD)</b>		
MRD negativity rate <sup>afgh</sup> N(%) [95% CI] <sup>e</sup>	147 (55) [49-62]	74 (41) [34-48]
p-value (Stratified Cochran-Mantel-Haenszel) <sup>b</sup>	0.0026	
Number of patients with CR or better (sCR and CR)	198	116
MRD negativity rate in patients with CR or better <sup>gh</sup> N(%) [95% CI]	147 (74) [68-80]	74 (64) [54-73]

<sup>a</sup> Based on ITT population.

<sup>b</sup> Stratified by age (<70 years vs ≥70 years) and Revised International Staging System (R-ISS) stage (I or II vs. III or not classified) according to IRT.

<sup>c</sup> A comparison is considered statistically significant if the p-value is <0.0148.

<sup>d</sup> sCR, CR, VGPR, and PR were evaluated by the IRC using the IMWG response criteria.

<sup>e</sup> Estimated using Clopper-Pearson method.

<sup>f</sup> Other efficacy endpoints of CR and MRD negativity CR were tested hierarchically after PFS.

<sup>g</sup> Patients achieved both MRD negativity (threshold of 10<sup>-5</sup>) and response of CR or better.

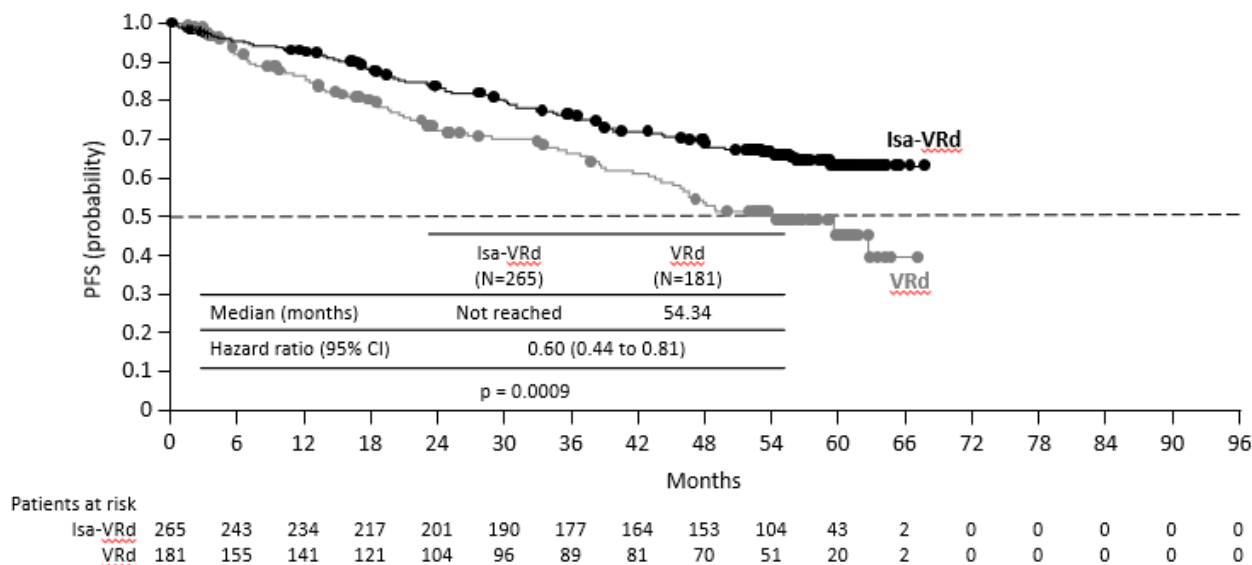
<sup>h</sup> Based on a sensitivity level of 10<sup>-5</sup> by the next-generation sequencing assay (clonoSEQ).

NR: not reached.

Median follow-up time=60 months.

Median overall survival was not reached for either treatment group. At a median follow-up time of 60 months, 26% of patients in the Isa-VRd group and 32.6% of patients in the VRd group had died (HR=0.78; 95% CI: 0.55 to 1.1).

**Figure 3 – Kaplan-Meier Curves of PFS – ITT population – IMROZ**



## 16 HOW SUPPLIED/STORAGE AND HANDLING

### How Supplied

SARCLISA (isatuximab-irfc) injection is a clear to slightly opalescent, colorless to slightly yellow solution, essentially free of visible particulates, supplied as follows:

- One 100 mg/5 mL (20 mg/mL) single-dose vial in a carton: NDC 0024-0654-01
- One 500 mg/25 mL (20 mg/mL) single-dose vial in a carton: NDC 0024-0656-01

### Storage

Store in a refrigerator at 36°F to 46°F (2°C to 8°C) in the original carton to protect from light. Do not freeze. Do not shake.

### Handling and Disposal

Discard unused portion of solution. All materials that have been utilized for dilution and administration should be disposed of according to standard procedures.

## 17 PATIENT COUNSELING INFORMATION

Advise the patient to read the FDA-approved patient labeling (Patient Information).

### Infusion-Related Reaction

Advise patients to seek immediate medical attention for any of the following signs and symptoms of infusion-related reactions: shortness of breath, wheezing or trouble breathing; swelling of the face, mouth, throat, or tongue; throat tightness; palpitations; dizziness, lightheadedness, or fainting; headache; cough; rash or itching; nausea; runny or stuffy nose; or chills [see *Warnings and Precautions (5.1)*].

## Infections

Inform patients about the risk of developing infections during SARCLISA treatment, and to report immediately any fever or symptoms of infection to their healthcare provider [*see Warnings and Precautions (5.2)*].

## Neutropenia

Inform patients about the risk of neutropenia and infection during SARCLISA treatment and the importance of reporting immediately any fever or symptoms of infection to their healthcare provider [*see Warnings and Precautions (5.3) and Adverse Reactions (6.1)*].

## Second Primary Malignancies

Inform patients of the risk of developing second primary malignancies during treatment with SARCLISA when given with pomalidomide and dexamethasone or with carfilzomib and dexamethasone, or with bortezomib, lenalidomide, and dexamethasone [*see Warnings and Precautions (5.4)*].

## Cardiac Toxicities

Inform patients about the risk of cardiac failure during treatment with SARCLISA when given with carfilzomib and dexamethasone, and the importance of reporting immediately any difficulty breathing, cough, or leg swelling to their healthcare provider [*see Adverse Reactions (6.1)*].

## Interference with Laboratory Tests

Advise patients to inform healthcare providers and transfusion center personnel that they are treated with SARCLISA in case a red blood cell transfusion is planned. Advise patients that SARCLISA may affect the results of blood tests to match their blood type for approximately 6 months after their last infusion of SARCLISA [*see Warnings and Precautions (5.5) and Drug Interactions (7.1)*].

## Embryo-Fetal Toxicity

Advise pregnant women and females of reproductive potential of the potential risk to a fetus and to use effective contraception during treatment and for 5 months after the last dose of SARCLISA [*see Use in Specific Populations (8.1, 8.3)*].

Advise patients that pomalidomide or lenalidomide have the potential to cause fetal harm and have specific requirements regarding contraception, pregnancy testing, blood and sperm donation, and transmission in sperm. Advise patients to report suspected or known pregnancies. Pomalidomide and lenalidomide are only available through a REMS program [*see Use in Specific Populations (8.1, 8.3)*].

Manufactured by:  
sanofi-aventis U.S. LLC  
Morristown, NJ 07960 A SANOFI COMPANY  
U.S. License No. 1752

SARCLISA is a registered trademark of Sanofi

©2025 sanofi-aventis U.S. LLC

**Patient Information**  
SARCLISA® (sar-cli-sa)  
(isatuximab-irfc)  
injection

SARCLISA is used together with two or three other combinations of medicines: either pomalidomide and dexamethasone, or carfilzomib and dexamethasone, or bortezomib, lenalidomide, and dexamethasone. You should also read the Medication Guide that comes with pomalidomide and lenalidomide. You can ask your healthcare provider or pharmacist for information about carfilzomib and dexamethasone.

**What is SARCLISA?**

SARCLISA is a prescription medicine used in combination with:

- the medicines pomalidomide and dexamethasone, to treat adults who have received at least 2 prior therapies including lenalidomide and a proteasome inhibitor to treat multiple myeloma.
- the medicines carfilzomib and dexamethasone, to treat adults with multiple myeloma who have already received 1 to 3 lines of treatment and they did not work or are no longer working.
- the medicines bortezomib, lenalidomide and dexamethasone, to treat adults with newly diagnosed multiple myeloma who cannot receive a type of stem cell transplant that uses their own stem cells (autologous stem cell transplant).

It is not known if SARCLISA is safe and effective in children.

**Do not** receive SARCLISA if you have a severe allergic reaction to isatuximab-irfc or any of the ingredients in SARCLISA. See the end of this leaflet for complete list of ingredients in SARCLISA.

**Before receiving SARCLISA, tell your healthcare provider about all of your medical conditions, including if you:**

- have an infection.
- have heart problems, if your healthcare provider prescribes SARCLISA in combination with carfilzomib and dexamethasone for you.
- have had shingles (herpes zoster).
- are pregnant or plan to become pregnant. SARCLISA can harm your unborn baby.
  - Females who are able to become pregnant should use an effective method of birth control during treatment and for 5 months after your last dose of SARCLISA. Talk to your healthcare provider about birth control methods that you can use during this time.
  - Tell your healthcare provider right away if you think you are pregnant or become pregnant during treatment with SARCLISA.
  - Before receiving SARCLISA in combination with either pomalidomide or lenalidomide, females and males must agree to the instructions in the pomalidomide or lenalidomide REMS programs. The pomalidomide and lenalidomide REMS programs have specific requirements about birth control, pregnancy testing, blood donation, and sperm donation that you need to know. Talk to your healthcare provider to learn more about pomalidomide or lenalidomide.
- are breastfeeding or plan to breastfeed. It is not known if SARCLISA passes into your breast milk. Do not breastfeed during treatment with SARCLISA.

**Tell your healthcare provider about all the medicines you take**, including prescription and over-the-counter medicines, vitamins, and herbal supplements.

**How will I receive SARCLISA?**

- SARCLISA will be given to you by your healthcare provider by intravenous (IV) infusion into your vein.
- **SARCLISA in combination with pomalidomide and dexamethasone, or SARCLISA in combination with carfilzomib and dexamethasone** is given in treatment cycles of 28 days (4 weeks).
  - Cycle 1 (28-day cycle), SARCLISA is given weekly.
  - Cycle 2 and beyond (28-day cycles), SARCLISA is given every 2 weeks.

- **SARCLISA in combination with bortezomib, lenalidomide, and dexamethasone** is given in treatment cycles of 42 days (6 weeks) from cycle 1 to 4 and in treatment cycles of 28 days (4 weeks) from cycle 5.
  - Cycle 1 (42-day cycle), SARCLISA is given weekly (Days 1, 8, 15, 22, and 29).
  - Cycles 2 to 4 (42-day cycles), SARCLISA is given every 2 weeks (Days 1, 15, and 29).
  - Cycles 5 to 17 (28-day cycles), SARCLISA is given every 2 weeks (Days 1 and 15).
  - Cycles 18 and beyond (28-day cycles), SARCLISA is given every 4 weeks.
- Your healthcare provider will decide how many treatments you will receive.
- Your healthcare provider will give you medicines before each infusion of SARCLISA, to help reduce the risk of infusion reactions (make them less frequent and severe).
- If you miss any appointments, call your healthcare provider as soon as possible to reschedule your appointment.

**What are the possible side effects of SARCLISA?**

**SARCLISA may cause serious side effects including:**

- **Infusion reactions.** Infusion reactions are common with SARCLISA and can sometimes be severe or life threatening.
  - Your healthcare provider will prescribe medicines before each infusion of SARCLISA to help decrease your risk for infusion reactions or to help make any infusion reaction less severe. You will be monitored for infusion reactions during each infusion of SARCLISA.
  - Your healthcare provider may slow down or stop your infusion, or completely stop treatment with SARCLISA if you have an infusion reaction.

**Get medical help right away if you develop any of the following symptoms of infusion reaction during or after an infusion of SARCLISA:**

- shortness of breath, wheezing or trouble breathing
- swelling of the face, mouth, throat, or tongue
- throat tightness
- palpitations
- dizziness, lightheadedness, or fainting
- headache
- cough
- rash or itching
- nausea
- runny or stuffy nose
- chills
- **Infections.** SARCLISA can cause infections that are severe, life-threatening, or that may lead to death. Your healthcare provider will monitor you for signs and symptoms of infection before and during treatment with SARCLISA. Your healthcare provider may prescribe medicines for you to help prevent infections and treat you as needed if you develop an infection during treatment with SARCLISA. **Tell your healthcare provider right away if you develop a fever or any signs or symptoms of infection during treatment with SARCLISA.**
  - **Decreased white blood cell counts.** Decreased white blood cell counts are common with SARCLISA and certain white blood cells can be severely decreased. Fever can occur with low white blood cell counts and may be a sign that you have an infection. Your healthcare provider will check your blood cell counts during treatment with SARCLISA and may prescribe a medicine to help increase your white blood cell counts. **Tell your healthcare provider right away if you develop any fever or symptoms of infection during treatment with SARCLISA.**
- **Risk of new cancers.** New cancers have happened in people during and after treatment with SARCLISA. Your healthcare provider will monitor you for new cancers during treatment with SARCLISA.
- **Changes in blood tests.** SARCLISA may affect the results of blood tests to match your blood type for about 6 months after your last infusion of SARCLISA. Your healthcare provider will do blood tests to match your blood type before you start treatment with SARCLISA. **Tell all of your**

healthcare providers that you are being treated with SARCLISA before receiving blood transfusions.

**The most common side effects of SARCLISA in combination with pomalidomide and dexamethasone include:**

- upper respiratory tract infection
- lung infection (pneumonia)
- diarrhea
- decreased red blood cell count (anemia)
- decreased platelet count (thrombocytopenia)

**The most common side effects of SARCLISA in combination with carfilzomib and dexamethasone include:**

- upper respiratory tract infection
- tiredness and weakness
- high blood pressure
- diarrhea
- lung infection (pneumonia)
- trouble breathing
- trouble sleeping
- bronchitis
- cough
- back pain
- decreased red blood cell count (anemia)
- decreased platelet count (thrombocytopenia)

**The most common side effects of SARCLISA in combination with bortezomib, lenalidomide and dexamethasone include:**

- upper respiratory tract infection
- diarrhea
- tiredness and weakness
- tingling or numbness of the arms or legs
- lung infection (pneumonia)
- muscle or bone pain
- clouding of your eye (cataract)
- constipation
- swelling of the hands, legs, ankles and feet
- rash
- trouble sleeping
- COVID-19
- decreased red blood cell count (anemia)
- decreased platelet count (thrombocytopenia)

Heart failure can happen during treatment with SARCLISA in combination with carfilzomib and dexamethasone. **Tell your healthcare provider right away if you develop any of the following symptoms:**

- trouble breathing
- cough
- swelling of your ankles, feet, and legs

These are not all the possible side effects of SARCLISA. For more information, ask your healthcare provider or pharmacist.

Call your doctor for medical advice about side effects. You may report side effects to FDA at 1-800-FDA-1088.

#### **General information about the safe and effective use of SARCLISA.**

Medicines are sometimes prescribed for purposes other than those listed in a Patient Information leaflet. You can ask your pharmacist or healthcare provider for information about SARCLISA that is written for health professionals.

#### **What are the ingredients in SARCLISA?**

**Active ingredient:** isatuximab-irfc

**Inactive ingredients:** histidine, histidine hydrochloride monohydrate, polysorbate 80, sucrose, and water for injection.

Manufactured by: sanofi-aventis U.S. LLC, Morristown, NJ 07960, A SANOFI COMPANY. U.S. License No. 1752.

SARCLISA is a registered trademark of Sanofi. ©2025 sanofi-aventis U.S. LLC.

For more information, go to [www.sanofi-aventis.us](http://www.sanofi-aventis.us) or call 1-800-633-1610.

This Patient Information has been approved by the U.S. Food and Drug Administration.

Revised: 6/2026