

**CENTER FOR DRUG EVALUATION AND
RESEARCH**

APPLICATION NUMBER:

21-374

APPROVED DRAFT LABELING

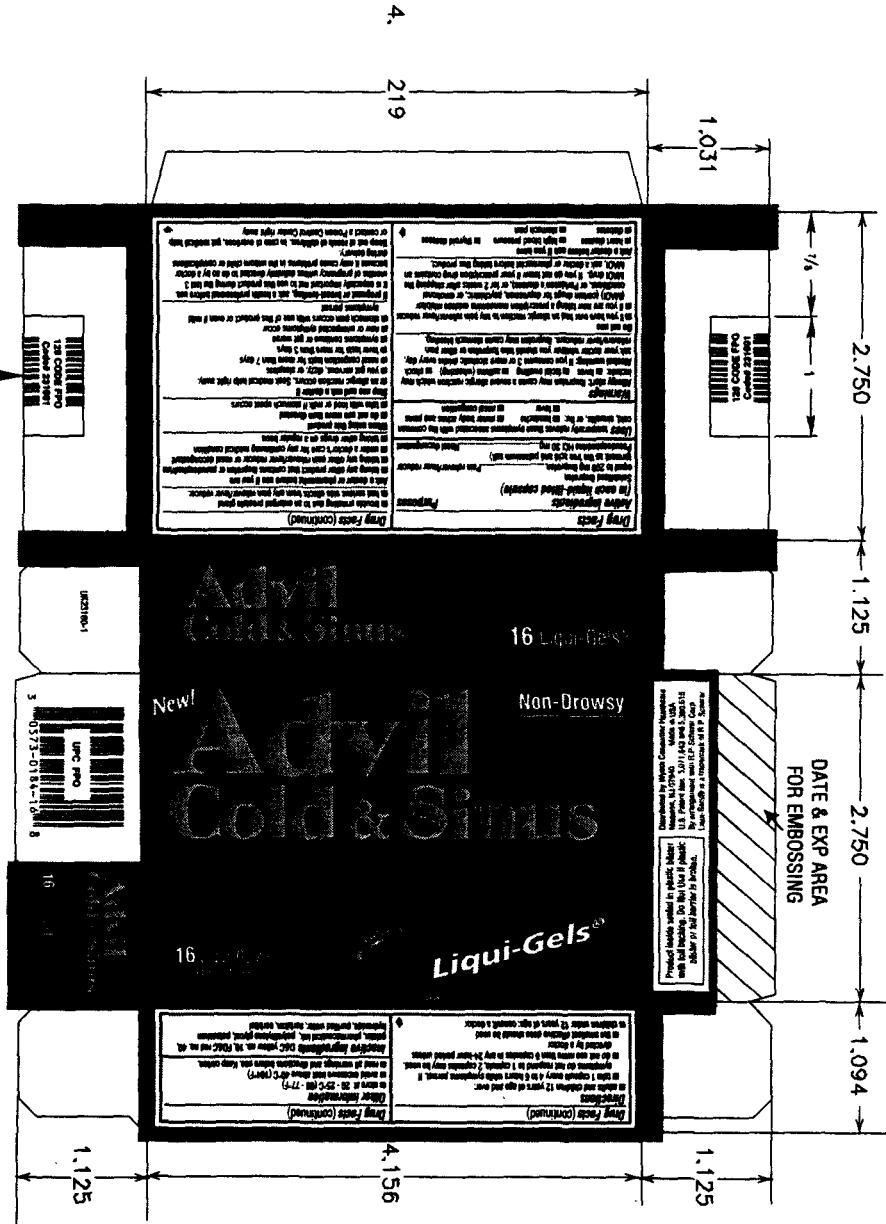
DEPARTMENT	REVIEWED BY		DATE	with Changes
	Print Name	Signature		
Graphic Artist				
Packaging Engineer				
Labeling Compliance				
Medical				
Regulatory Affairs				
Marketing				
Legal				
Trademark				

RELEASED	
(1)	Date _____
(2)	Date _____

(CODE TO EXTEND TO EDGE OF FLAP - UNWARRANTED)
PRINTED SIDE OF CARTON

C-10 MIL DENSITY WITH 4 OR
128 CODE AREA - SUBSET
6 DIGITS

2 3/4 X 1 1/8 X 4 5/32



Job Information Delta 5042 PS Campaign # UIC23100-1 Drawing # 4400 Rev. 1 Manufacturer Wyeth Consumer Healthcare Production Packaging Dept. Five Glaxo Farms Madison, NJ 07940 Phone: (973) 860-5585/5153 Fax: (973) 860-5048 Vendor Identification	Color Legend
Printer to replace PMS 072's with W-888 BATHS. ART. NO. 000. ALSO PRINTED TO REPLACE COLOR MANAGEMENT FOR COLOR APPROVAL. PLEASE TO THESE END.	

DRUG FACTS TEXT DEFINED	TYPE SIZE
• DRUG FACTS TITLE	9 pt
• DRUG FACTS CONTINUED	8 pt
• HEADINGS	8 pt
• SUBHEADS/BODY TEXT	6 pt
• LEADING	6.25 pt
• # OF CHARACTERS PER INCH	<39
• BULLETS	5 pt
• SPACE AFTER BULLETED SECTION	2 ems
• BARLINES, HAIRLINES	1.5 pt, 5 pt
• SPACE BETWEEN HAIRLINES AND BOX END	2 spaces
• SMALLEST @, TM etc.	6 pt

128 HD CODE AREA - SUBSET C 10 MIL DENSITY 4 OR 6 DIGITS - UNVARNISHED

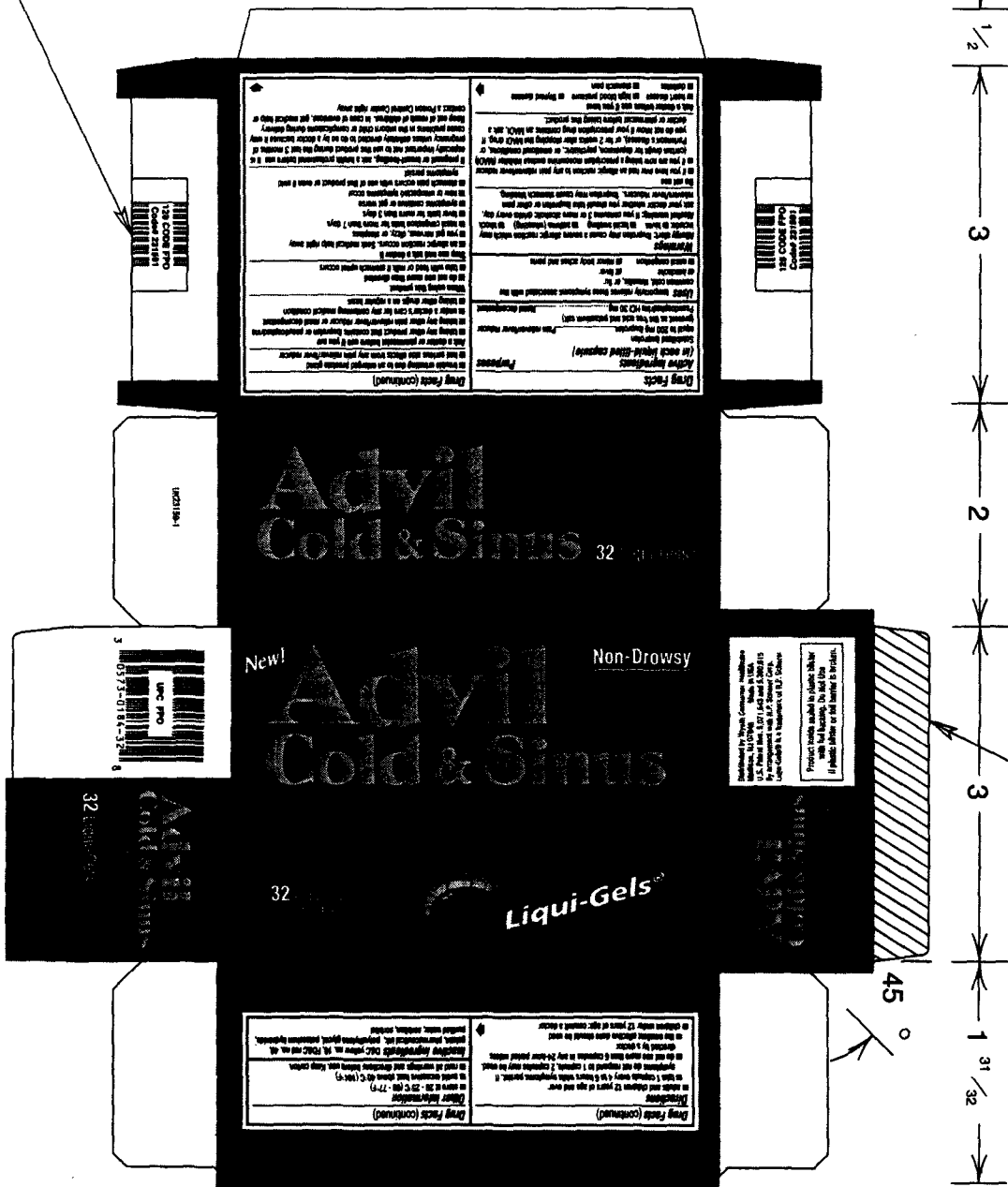
DEPARTMENT	REVIEWED BY		DATE	With Changes
	Print Name	Signature		
Graphic Artist				<input type="checkbox"/>
Packaging Engineer				<input type="checkbox"/>
Labeling Compliance				<input type="checkbox"/>
Medical				<input type="checkbox"/>
Regulatory Affairs				<input type="checkbox"/>
Marketing				<input type="checkbox"/>
Legal				<input type="checkbox"/>
Trademark				<input type="checkbox"/>

RELEASED

(1) _____ Date _____

(2) _____ Date _____

**DIGITAL MECHANICAL
COLOR REPRESENTATION MAY BE OFF
FOLLOW COLOR LEGEND FOR ACTUAL COLOR.**



UNVARNISHED AREA FOR LOT & EXP

Job Information	
Date 5/3/02	PASS #5
Component # UK23159-1	Drawing # 5015
Identification	
Wyeth	
Consumer Healthcare	
Production Packaging Dept. Five Caridea Farms Madison, NJ 07940 Phone: (973) 960-5585/5153 Fax: (973) 960-6048	
Vendor Identification	

Color Legend			
Printer Notes			
PRINTER TO REPLACE PFO DOTS WITH 10-RES DIGITAL ART ALSO PRINTER TO SUPPLY COLOR MANAGEMENT FOR COLOR APPROVAL PRIOR TO PRESS RUN.			

DRUG FACTS TEXT DEFINED	TYPE SIZE
• DRUG FACTS Title	9 pt
• DRUG FACTS CONTINUED	8 pt
• HEADINGS	8 pt
• SUBHEADS/BODY TEXT	8 pt
• LEADING	6.5 pt
• # OF CHARACTERS PER INCH	<30
• BULLETS	5 pt
• SPACE AFTER BULLETED SECTION	2 wms
• BARLINES, HAIRLINES	1.5 pt, 5 pt
• SPACE BETWEEN HAIRLINES AND BOX END	2 spaces
• SMALLEST @, TM etc.	4.5 pt

**This is a representation of an electronic record that was signed electronically and
this page is the manifestation of the electronic signature.**

/s/

Charles Ganley
5/30/02 12:58:59 PM

Lee Simon
5/30/02 01:50:50 PM