

# CENTER FOR DRUG EVALUATION AND RESEARCH

## Approval Package for:

### ***APPLICATION NUMBER:***

**NDA 019591/S-020**

***Trade Name:*** Lariam, for oral use 250mg

***Generic or Proper Name:*** Mefloquine Hydrochloride

***Sponsor:*** Hoffman-LaRoche, Inc.

***Approval Date:*** October 03, 2002

***Indication:*** Indicated for the treatment of mild to moderate acute malaria caused by mefloquine-susceptible strains of *P. falciparum* (both chloroquine-susceptible and resistant strains) or by *Plasmodium vivax*.

# CENTER FOR DRUG EVALUATION AND RESEARCH

NDA 019591/S-020

## CONTENTS

### Reviews / Information Included in this NDA Review.

<b>Approval Letter</b>	<b>X</b>
<b>Other Action Letters</b>	
<b>Labeling</b>	<b>X</b>
<b>REMS</b>	
<b>Summary Review</b>	
<b>Officer/Employee List</b>	
<b>Office Director Memo</b>	
<b>Cross Discipline Team Leader Review</b>	
<b>Clinical Review(s)</b>	
<b>Product Quality Review(s)</b>	
<b>Non-Clinical Review(s)</b>	
<b>Statistical Review(s)</b>	
<b>Clinical Microbiology / Virology Review(s)</b>	
<b>Clinical Pharmacology Review(s)</b>	
<b>Other Reviews</b>	
<b>Risk Assessment and Risk Mitigation Review(s)</b>	
<b>Proprietary Name Review(s)</b>	
<b>Administrative/Correspondence Document(s)</b>	

**CENTER FOR DRUG EVALUATION AND  
RESEARCH**

*APPLICATION NUMBER:*

**NDA 019591/S-020**

**APPROVAL LETTER**



NDA 19-591/S-020

Hoffman-LaRoche, Inc.  
Attention: Lynn DeVenezia-Tobias  
Program Manager, Drug Regulatory Affairs  
340 Kingsland St.  
Nutley, NJ 07110-1199

Dear Ms. DeVenezia-Tobias:

Please refer to your supplemental new drug application dated August 2, 2002, received August 5, 2002, submitted under section 505(b) of the Federal Food, Drug, and Cosmetic Act for Lariam® (mefloquine hydrochloride) Tablets, 250 mg.

We acknowledge receipt of your submissions dated August 29, 2002 and September 26, 2002.

This “changes being effected” supplemental new drug application adds or strengthens **CONTRAINDICATIONS, WARNINGS, PRECAUTIONS, and ADVERSE EVENTS** in the Lariam® package insert regarding depression and other psychiatric symptoms. The specific labeling changes are as follows. Added text is noted by double underline and deleted text is noted by ~~strikethrough~~:

## 1. CONTRAINDICATIONS

- This section was revised to read

Use of Lariam is contraindicated in patients with a known hypersensitivity to mefloquine or related compounds (eg, quinine and quinidine). Lariam should not be prescribed for prophylaxis in patients with active depression, a recent history of depression, generalized anxiety disorder, psychosis, or schizophrenia or other major psychiatric disorders, or with a history of (b) (4) convulsions.

## 2. WARNINGS

- Two new paragraphs were added and now appear as the third and fourth paragraphs in this section:

Mefloquine may cause psychiatric symptoms in a number of patients, ranging from anxiety, paranoia, and depression to hallucinations and psychotic behavior. On occasions, these symptoms

have been reported to continue long after mefloquine has been stopped. Rare cases of suicidal ideation and suicide have been reported though no relationship to drug administration has been confirmed. To minimize the chances of these adverse events, mefloquine should not be taken for prophylaxis in patients with active depression or with a recent history of depression, generalized anxiety disorder, psychosis, or schizophrenia or other major psychiatric disorders. Lariam should be used with caution in patients with a previous history of depression.

During prophylactic use, if psychiatric symptoms such as acute anxiety, depression, restlessness or confusion occur, these may be considered prodromal to a more serious event. In these cases, the drug must be discontinued and an alternative medication should be substituted.

(b) (4)

- In the **Information for Patients** subsection, the fifth bullet was revised to read:

that if the (b) (4)  
patients experience psychiatric symptoms such as acute anxiety, depression, restlessness or confusion, these may be considered prodromal to a more serious event. In these cases, the drug must be discontinued and an alternative medication should be (b) (4) substituted;

- In the **Drug Interactions** subsection, (b) (4)

Concomitant administration of Lariam and other related compounds (eg, quinine, quinidine and chloroquine) may produce electrocardiographic abnormalities and increase the risk of convulsions (see (b) (4) **WARNINGS**).

#### 4. ADVERSE REACTIONS

- The entire **Postmarketing** subsection was revised to read:

Postmarketing surveillance indicates that the same kind of adverse experiences are reported during prophylaxis, as well as acute treatment.

(b) (4)

The most frequently reported adverse events are nausea, vomiting, loose stools or diarrhea, abdominal pain, dizziness or vertigo, loss of balance, and neuropsychiatric events such as

headache, somnolence, and sleep disorders (insomnia, abnormal dreams) (b) (4) (b) (4)  
 (b) (4) These are usually mild and may decrease despite continued use.

(b) (4)

(b) (4)

(b) (4) Occasionally, more severe neuropsychiatric disorders have been reported such as:  
sensory and motor neuropathies (including paresthesia, (b) (4)  
(b) (4) (tremor and ataxia), convulsions, agitation or restlessness, anxiety,  
depression, mood changes, panic attacks, forgetfulness, confusion, hallucinations, aggression,  
psychotic or paranoid reactions (b) (4) and encephalopathy.  
Rare cases of suicidal ideation and suicide have been reported though no relationship to drug  
administration has been (b) (4) confirmed.

Other infrequent adverse events include:

Cardiovascular (b) (4). Disorders: circulatory disturbances (hypotension, hypertension, flushing, syncope), chest pain, tachycardia or palpitation, bradycardia, irregular pulse, extrasystoles, A-V block, and other transient cardiac conduction alterations.

Skin Disorders: rash, exanthema, erythema, urticaria, pruritus, edema, hair loss, (b) (4)  
erythema multiforme, and Stevens-Johnson syndrome.

Musculoskeletal (b) (4). Disorders: muscle weakness, muscle cramps, myalgia, and arthralgia.

(b) (4) Other Symptoms: visual disturbances, vestibular disorders including tinnitus and hearing impairment, dyspnea, asthenia, malaise, fatigue, fever, sweating, chills, dyspepsia and loss of appetite.

(b) (4)

We have completed the review of this supplemental application, as amended, and have concluded that adequate information has been presented to demonstrate that the drug product is safe and effective for use as recommended in the agreed upon labeling text. Accordingly, the supplemental application is approved effective on the date of this letter.

If a letter communicating important information about this drug product (i.e., a "Dear Health Care Professional" letter) is issued to physicians and others responsible for patient care, we request that you submit a copy of the letter to this NDA and a copy to the following address:

MEDWATCH, HF-2  
 FDA  
 5600 Fishers Lane  
 Rockville, MD 20857

We remind you that you must comply with the requirements for an approved NDA set forth under 21 CFR 314.80 and 314.81.

If you have any questions, call Robin Anderson, Labeling Reviewer, at (301) 827-2127.

Sincerely,

*{See appended electronic signature page}*

Renata Albrecht, M.D.  
Acting Director  
Division of Special Pathogen and Immunologic Drug Products  
Office of Drug Evaluation IV  
Center for Drug Evaluation and Research

-----  
**This is a representation of an electronic record that was signed electronically and  
this page is the manifestation of the electronic signature.**  
-----

/s/

-----  
Renata Albrecht  
10/3/02 02:31:28 PM  
N 19-591/S020



**CENTER FOR DRUG EVALUATION AND  
RESEARCH**

*APPLICATION NUMBER:*

**NDA 019591/S-020**

**LABELING**

**LARIAM<sup>®</sup>**

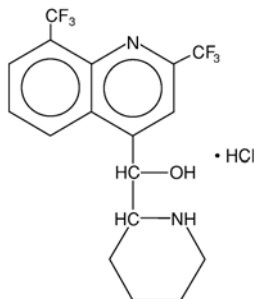
brand of  
mefloquine hydrochloride  
**TABLETS**

**DESCRIPTION**

Lariam (mefloquine hydrochloride) is an antimalarial agent available as 250-mg tablets of mefloquine hydrochloride (equivalent to 228.0 mg of the free base) for oral administration.

Mefloquine hydrochloride is a 4-quinolinemethanol derivative with the specific chemical name of (R\*, S\*)-(±)-α-2-piperidinyl-2,8-bis (trifluoromethyl)-4-quinolinemethanol hydrochloride. It is a 2-aryl substituted chemical structural analog of quinine. The drug is a white to almost white crystalline compound, slightly soluble in water.

Mefloquine hydrochloride has a calculated molecular weight of 414.78 and the following structural formula:



The inactive ingredients are ammonium-calcium alginate, corn starch, crospovidone, lactose, magnesium stearate, microcrystalline cellulose, poloxamer #331, and talc.

**CLINICAL PHARMACOLOGY**

Mefloquine is an antimalarial agent which acts as a blood schizonticide. Its exact mechanism of action is not known.

Pharmacokinetic studies of mefloquine in healthy male subjects showed that a significant lagtime occurred after drug administration, and the terminal elimination half-life varied widely (13 to 24 days) with a mean of about 3 weeks. Mefloquine is a mixture of enantiomeric molecules whose rates of release, absorption, transport, action, degradation and elimination may differ. A valid pharmacokinetic model may not exist in such a case.

**LARIAM<sup>®</sup> (mefloquine hydrochloride)**

Additional studies in European subjects showed slightly greater concentrations of drug for longer periods of time. The absorption half-life was 0.36 to 2 hours, and the terminal elimination half-life was 15 to 33 days. The primary metabolite was identified and its concentrations were found to surpass the concentrations of mefloquine.

Multiple-dose kinetic studies confirmed the long elimination half-lives previously observed. The mean metabolite to mefloquine ratio measured at steady-state was found to range between 2.3 and 8.6.

The total clearance of the drug, which is essentially all hepatic, is approximately 30 mL/min. The volume of distribution, approximately 20 L/kg, indicates extensive distribution. The drug is highly bound (98%) to plasma proteins and concentrated in blood erythrocytes, the target cells in malaria, at a relatively constant erythrocyte-to-plasma concentration ratio of about 2.

The pharmacokinetics of mefloquine in patients with compromised renal function and compromised hepatic function have not been studied.

In vitro and in vivo studies showed no hemolysis associated with glucose-6-phosphate dehydrogenase deficiency (see **ANIMAL TOXICOLOGY**).

**Microbiology:** Strains of *Plasmodium falciparum* resistant to mefloquine have been reported.

**INDICATIONS AND USAGE**

**Treatment of Acute Malaria Infections:** Lariam is indicated for the treatment of mild to moderate acute malaria caused by mefloquine-susceptible strains of *P. falciparum* (both chloroquine-susceptible and resistant strains) or by *Plasmodium vivax*. There are insufficient clinical data to document the effect of mefloquine in malaria caused by *P. ovale* or *P. malariae*.

*Note:* Patients with acute *P. vivax* malaria, treated with Lariam, are at high risk of relapse because Lariam does not eliminate exoerythrocytic (hepatic phase) parasites. To avoid relapse, after initial treatment of the acute infection with Lariam, patients should subsequently be treated with an 8-aminoquinoline (eg, primaquine).

**Prevention of Malaria:** Lariam is indicated for the prophylaxis of *P. falciparum* and *P. vivax* malaria infections, including prophylaxis of chloroquine-resistant strains of *P. falciparum*.

**CONTRAINDICATIONS**

Use of Lariam is contraindicated in patients with a known hypersensitivity to mefloquine or related compounds (eg, quinine and quinidine). Lariam should not be prescribed for prophylaxis

## **LARIAM<sup>®</sup> (mefloquine hydrochloride)**

in patients with active depression, a recent history of depression, generalized anxiety disorder, psychosis, or schizophrenia or other major psychiatric disorders, or with a history of convulsions.

### **WARNINGS**

**In case of life-threatening, serious or overwhelming malaria infections due to *P. falciparum*, patients should be treated with an intravenous antimalarial drug. Following completion of intravenous treatment, Lariam may be given to complete the course of therapy.**

**Data on the use of halofantrine subsequent to administration of Lariam suggest a significant, potentially fatal prolongation of the QTc interval of the ECG. Therefore, halofantrine must not be given simultaneously with or subsequent to Lariam. No data are available on the use of Lariam after halofantrine (see PRECAUTIONS: *Drug Interactions*).**

**Mefloquine may cause psychiatric symptoms in a number of patients, ranging from anxiety, paranoia, and depression to hallucinations and psychotic behavior. On occasions, these symptoms have been reported to continue long after mefloquine has been stopped. Rare cases of suicidal ideation and suicide have been reported though no relationship to drug administration has been confirmed. To minimize the chances of these adverse events, mefloquine should not be taken for prophylaxis in patients with active depression or with a recent history of depression, generalized anxiety disorder, psychosis, or schizophrenia or other major psychiatric disorders. Lariam should be used with caution in patients with a previous history of depression.**

**During prophylactic use, if psychiatric symptoms such as acute anxiety, depression, restlessness or confusion occur, these may be considered prodromal to a more serious event. In these cases, the drug must be discontinued and an alternative medication should be substituted.**

**Concomitant administration of Lariam and quinine or quinidine may produce electrocardiographic abnormalities.**

**Concomitant administration of Lariam and quinine or chloroquine may increase the risk of convulsions.**

### **PRECAUTIONS**

***General:*** In patients with epilepsy, Lariam may increase the risk of convulsions. The drug should therefore be prescribed only for curative treatment in such patients and only if there are compelling medical reasons for its use (see **PRECAUTIONS: *Drug Interactions***).

Caution should be exercised with regard to activities requiring alertness and fine motor coordination such as driving, piloting aircraft and operating machinery, as dizziness, a loss of

**LARIAM<sup>®</sup> (mefloquine hydrochloride)**

balance, or other disorders of the central or peripheral nervous system have been reported during and following the use of Lariam. These effects may occur after therapy is discontinued due to the long half-life of the drug. Lariam should be used with caution in patients with psychiatric disturbances because mefloquine use has been associated with emotional disturbances (see **ADVERSE REACTIONS**).

In patients with impaired liver function the elimination of mefloquine may be prolonged, leading to higher plasma levels.

This drug has been administered for longer than 1 year. If the drug is to be administered for a prolonged period, periodic evaluations including liver function tests should be performed. Although retinal abnormalities seen in humans with long-term chloroquine use have not been observed with mefloquine use, long-term feeding of mefloquine to rats resulted in dose-related ocular lesions (retinal degeneration, retinal edema and lenticular opacity at 12.5 mg/kg/day and higher) (see **ANIMAL TOXICOLOGY**). Therefore, periodic ophthalmic examinations are recommended.

Parenteral studies in animals show that mefloquine, a myocardial depressant, possesses 20% of the antifibrillatory action of quinidine and produces 50% of the increase in the PR interval reported with quinine. The effect of mefloquine on the compromised cardiovascular system has not been evaluated. However, transitory and clinically silent ECG alterations have been reported during the use of mefloquine. Alterations included sinus bradycardia, sinus arrhythmia, first degree AV-block, prolongation of the QTc interval and abnormal T waves (see also cardiovascular effects under **PRECAUTIONS: Drug Interactions** and **ADVERSE REACTIONS**). The benefits of Lariam therapy should be weighed against the possibility of adverse effects in patients with cardiac disease.

**Laboratory Tests:** Periodic evaluation of hepatic function should be performed during prolonged prophylaxis.

***Information for Patients:***

Patients should be advised:

- that malaria can be a life-threatening infection in the traveler;
- that Lariam is being prescribed to help prevent or treat this serious infection;
- that in a small percentage of cases, patients are unable to take this medication because of side effects, and it may be necessary to change medications;
- that when used as prophylaxis, the first dose of Lariam should be taken one week prior to departure;

**LARIAM<sup>®</sup> (mefloquine hydrochloride)**

- that if the patients experience psychiatric symptoms such as acute anxiety, depression, restlessness or confusion, these may be considered prodromal to a more serious event. In these cases, the drug must be discontinued and an alternative medication should be substituted;
- that no chemoprophylactic regimen is 100% effective, and protective clothing, insect repellents, and bednets are important components of malaria prophylaxis;
- to seek medical attention for any febrile illness that occurs after return from a malarious area and inform their physician that they may have been exposed to malaria.

**Drug Interactions:** Drug-drug interactions with Lariam have not been explored in detail. There is one report of cardiopulmonary arrest, with full recovery, in a patient who was taking a beta blocker (propranolol) (see **PRECAUTIONS: General**). The effects of mefloquine on the compromised cardiovascular system have not been evaluated. The benefits of Lariam therapy should be weighed against the possibility of adverse effects in patients with cardiac disease.

Because of the danger of a potentially fatal prolongation of the QTc interval, halofantrine should not be given simultaneously with or subsequent to Lariam (see **WARNINGS**).

Concomitant administration of Lariam and other related compounds (eg, quinine, quinidine and chloroquine) may produce electrocardiographic abnormalities and increase the risk of convulsions (see **WARNINGS**). If these drugs are to be used in the initial treatment of severe malaria, Lariam administration should be delayed at least 12 hours after the last dose. There is evidence that the use of halofantrine after mefloquine causes a significant lengthening of the QTc interval. Clinically significant QTc prolongation has not been found with mefloquine alone.

This appears to be the only clinically relevant interaction of this kind with Lariam, although theoretically, coadministration of other drugs known to alter cardiac conduction (eg, antiarrhythmic or beta-adrenergic blocking agents, calcium channel blockers, antihistamines or H<sub>1</sub>-blocking agents, tricyclic antidepressants and phenothiazines) might also contribute to a prolongation of the QTc interval. There are no data that conclusively establish whether the concomitant administration of mefloquine and the above listed agents has an effect on cardiac function.

In patients taking an anticonvulsant (eg, valproic acid, carbamazepine, phenobarbital or phenytoin), the concomitant use of Lariam may reduce seizure control by lowering the plasma levels of the anticonvulsant. Therefore, patients concurrently taking antiseizure medication and Lariam should have the blood level of their antiseizure medication monitored and the dosage adjusted appropriately (see **PRECAUTIONS: General**).

When Lariam is taken concurrently with oral live typhoid vaccines, attenuation of immunization cannot be excluded. Vaccinations with attenuated live bacteria should therefore be completed at least 3 days before the first dose of Lariam.

**LARIAM<sup>®</sup> (mefloquine hydrochloride)**

No other drug interactions are known. Nevertheless, the effects of Lariam on travelers receiving comedication, particularly those on anticoagulants or antidiabetics, should be checked before departure.

In clinical trials, the concomitant administration of sulfadoxine and pyrimethamine did not alter the adverse reaction profile.

***Carcinogenesis, Mutagenesis, Impairment of Fertility:***

*Carcinogenesis:* The carcinogenic potential of mefloquine was studied in rats and mice in 2-year feeding studies at doses of up to 30 mg/kg/day. No treatment-related increases in tumors of any type were noted.

*Mutagenesis:* The mutagenic potential of mefloquine was studied in a variety of assay systems including: Ames test, a host-mediated assay in mice, fluctuation tests and a mouse micronucleus assay. Several of these assays were performed with and without prior metabolic activation. In no instance was evidence obtained for the mutagenicity of mefloquine.

*Impairment of Fertility:* Fertility studies in rats at doses of 5, 20, and 50 mg/kg/day of mefloquine have demonstrated adverse effects on fertility in the male at the high dose of 50 mg/kg/day, and in the female at doses of 20 and 50 mg/kg/day. Histopathological lesions were noted in the epididymides from male rats at doses of 20 and 50 mg/kg/day. Administration of 250 mg/week of mefloquine (base) in adult males for 22 weeks failed to reveal any deleterious effects on human spermatozoa.

***Pregnancy:*** Teratogenic Effects. Pregnancy Category C. Mefloquine has been demonstrated to be teratogenic in rats and mice at a dose of 100 mg/kg/day. In rabbits, a high dose of 160 mg/kg/day was embryotoxic and teratogenic, and a dose of 80 mg/kg/day was teratogenic but not embryotoxic. There are no adequate and well-controlled studies in pregnant women. However, clinical experience with Lariam has not revealed an embryotoxic or teratogenic effect. Mefloquine should be used during pregnancy only if the potential benefit justifies the potential risk to the fetus. Women of childbearing potential who are traveling to areas where malaria is endemic should be warned against becoming pregnant. Women of childbearing potential should also be advised to practice contraception during malaria prophylaxis with Lariam.

***Nursing Mothers:*** Mefloquine is excreted in human milk. Based on a study in a few subjects, low concentrations (3% to 4%) of mefloquine were excreted in human milk following a dose equivalent to 250 mg of the free base. Because of the potential for serious adverse reactions in nursing infants from mefloquine, a decision should be made whether to discontinue the drug, taking into account the importance of the drug to the mother.

**LARIAM<sup>®</sup> (mefloquine hydrochloride)**

***Pediatric Use:*** Use of Lariam to treat acute, uncomplicated *P. falciparum* malaria in pediatric patients is supported by evidence from adequate and well-controlled studies of Lariam in adults with additional data from published open-label and comparative trials using Lariam to treat malaria caused by *P. falciparum* in patients younger than 16 years of age. The safety and effectiveness of Lariam for the treatment of malaria in pediatric patients below the age of 6 months have not been established.

In several studies, the administration of Lariam for the treatment of malaria was associated with early vomiting in pediatric patients. Early vomiting was cited in some reports as a possible cause of treatment failure. If a second dose is not tolerated, the patient should be monitored closely and alternative malaria treatment considered if improvement is not observed within a reasonable period of time (see **DOSAGE AND ADMINISTRATION**).

**ADVERSE REACTIONS**

***Clinical:*** At the doses used for treatment of acute malaria infections, the symptoms possibly attributable to drug administration cannot be distinguished from those symptoms usually attributable to the disease itself.

Among subjects who received mefloquine for prophylaxis of malaria, the most frequently observed adverse experience was vomiting (3%). Dizziness, syncope, extrasystoles and other complaints affecting less than 1% were also reported.

Among subjects who received mefloquine for treatment, the most frequently observed adverse experiences included: dizziness, myalgia, nausea, fever, headache, vomiting, chills, diarrhea, skin rash, abdominal pain, fatigue, loss of appetite, and tinnitus. Those side effects occurring in less than 1% included bradycardia, hair loss, emotional problems, pruritus, asthenia, transient emotional disturbances and telogen effluvium (loss of resting hair). Seizures have also been reported.

Two serious adverse reactions were cardiopulmonary arrest in one patient shortly after ingesting a single prophylactic dose of mefloquine while concomitantly using propranolol (see **PRECAUTIONS**), and encephalopathy of unknown etiology during prophylactic mefloquine administration. The relationship of encephalopathy to drug administration could not be clearly established.

***Postmarketing:*** Postmarketing surveillance indicates that the same kind of adverse experiences are reported during prophylaxis, as well as acute treatment.

The most frequently reported adverse events are nausea, vomiting, loose stools or diarrhea, abdominal pain, dizziness or vertigo, loss of balance, and neuropsychiatric events such as headache, somnolence, and sleep disorders (insomnia, abnormal dreams). These are usually mild and may decrease despite continued use.



## **LARIAM<sup>®</sup> (mefloquine hydrochloride)**

Occasionally, more severe neuropsychiatric disorders have been reported such as: sensory and motor neuropathies (including paresthesia, tremor and ataxia), convulsions, agitation or restlessness, anxiety, depression, mood changes, panic attacks, forgetfulness, confusion, hallucinations, aggression, psychotic or paranoid reactions and encephalopathy. Rare cases of suicidal ideation and suicide have been reported though no relationship to drug administration has been confirmed.

Other infrequent adverse events include:

*Cardiovascular Disorders:* circulatory disturbances (hypotension, hypertension, flushing, syncope), chest pain, tachycardia or palpitation, bradycardia, irregular pulse, extrasystoles, A-V block, and other transient cardiac conduction alterations.

*Skin Disorders:* rash, exanthema, erythema, urticaria, pruritus, edema, hair loss, erythema multiforme, and Stevens-Johnson syndrome.

*Musculoskeletal Disorders:* muscle weakness, muscle cramps, myalgia, and arthralgia.

*Other Symptoms:* visual disturbances, vestibular disorders including tinnitus and hearing impairment, dyspnea, asthenia, malaise, fatigue, fever, sweating, chills, dyspepsia and loss of appetite.

**Laboratory:** The most frequently observed laboratory alterations which could be possibly attributable to drug administration were decreased hematocrit, transient elevation of transaminases, leukopenia and thrombocytopenia. These alterations were observed in patients with acute malaria who received treatment doses of the drug and were attributed to the disease itself.

During prophylactic administration of mefloquine to indigenous populations in malaria-endemic areas, the following occasional alterations in laboratory values were observed: transient elevation of transaminases, leukocytosis or thrombocytopenia.

Because of the long half-life of mefloquine, adverse reactions to Lariam may occur or persist up to several weeks after the last dose.

## **OVERDOSAGE**

In cases of overdosage with Lariam, the symptoms mentioned under **ADVERSE REACTIONS** may be more pronounced. The following procedure is recommended in case of overdosage: Induce vomiting or perform gastric lavage, as appropriate. Monitor cardiac function (if possible by ECG) and neurologic and psychiatric status for at least 24 hours. Provide symptomatic and intensive supportive treatment as required, particularly for cardiovascular disturbances. Treat vomiting or diarrhea with standard fluid therapy.

**LARIAM<sup>®</sup> (mefloquine hydrochloride)****DOSAGE AND ADMINISTRATION (see INDICATIONS AND USAGE)**

**Adult Patients:** *Treatment of mild to moderate malaria in adults caused by P. vivax or mefloquine-susceptible strains of P. falciparum:* Five tablets (1250 mg) mefloquine hydrochloride to be given as a single oral dose. The drug should not be taken on an empty stomach and should be administered with at least 8 oz (240 mL) of water.

If a full-treatment course has been administered without clinical cure, alternative treatment should be given. Similarly, if previous prophylaxis with mefloquine has failed, Lariam should not be used for curative treatment.

*Note:* Patients with acute *P. vivax* malaria, treated with Lariam, are at high risk of relapse because Lariam does not eliminate exoerythrocytic (hepatic phase) parasites. To avoid relapse after initial treatment of the acute infection with Lariam, patients should subsequently be treated with an 8-aminoquinoline (eg, primaquine).

*Malaria prophylaxis:* One 250 mg Lariam tablet once weekly.

Prophylactic drug administration should begin 1 week before departure to an endemic area. Subsequent weekly doses should always be taken on the same day of the week. To reduce the risk of malaria after leaving an endemic area, prophylaxis should be continued for 4 additional weeks. Tablets should not be taken on an empty stomach and should be administered with at least 8 oz (240 mL) of water.

In certain cases, eg, when a traveler is taking other medication, it may be desirable to start prophylaxis 2 to 3 weeks prior to departure, in order to ensure that the combination of drugs is well tolerated.

**Pediatric Patients:** *Treatment of mild to moderate malaria in pediatric patients caused by mefloquine-susceptible strains of P. falciparum:* 20 to 25 mg/kg for non-immune patients. Splitting the total curative dose into 2 doses taken 6 to 8 hours apart may reduce the occurrence or severity of adverse effects. Experience with Lariam in infants less than 3 months old or weighing less than 5 kg is limited. The drug should not be taken on an empty stomach and should be administered with ample water. For very young patients, the dose may be crushed, mixed with water or sugar water and may be administered via an oral syringe.

If a full-treatment course has been administered without clinical cure, alternative treatment should be given. Similarly, if previous prophylaxis with mefloquine has failed, Lariam should not be used for curative treatment.

In pediatric patients, the administration of Lariam for the treatment of malaria has been associated with early vomiting. In some cases, early vomiting has been cited as a possible cause of treatment failure (see **PRECAUTIONS**). If a significant loss of drug product is observed or suspected because of vomiting, a second full dose of Lariam should be administered to patients

## **LARIAM<sup>®</sup> (mefloquine hydrochloride)**

who vomit less than 30 minutes after receiving the drug. If vomiting occurs 30 to 60 minutes after a dose, an additional half-dose should be given. If vomiting recurs, the patient should be monitored closely and alternative malaria treatment considered if improvement is not observed within a reasonable period of time.

The safety and effectiveness of Lariam to treat malaria in pediatric patients below the age of 6 months have not been established.

*Malaria Prophylaxis:* The following doses have been extrapolated from the recommended adult dose. Neither the pharmacokinetics, nor the clinical efficacy of these doses have been determined in children owing to the difficulty of acquiring this information in pediatric subjects. The recommended prophylactic dose of Lariam is 3 to 5 mg/kg once weekly. One 250 mg Lariam tablet should be taken once weekly in pediatric patients weighing over 45 kg. In pediatric patients weighing less than 45 kg, the weekly dose decreases in proportion to body weight:

>30 to 45 kg:	¾ tablet
>20 to 30 kg:	½ tablet
up to 20 kg:	¼ tablet

Experience with Lariam in infants less than 3 months old or weighing less than 5 kg is limited.

### **HOW SUPPLIED**

Lariam is available as scored, white, round tablets, containing 250 mg of mefloquine hydrochloride in unit-dose packages of 25 (NDC 0004-0172-02). Imprint on tablets:  
LARIAM 250 ROCHE

Tablets should be stored at 15° to 30°C (59° to 86°F).

### **ANIMAL TOXICOLOGY**

Ocular lesions were observed in rats fed mefloquine daily for 2 years. All surviving rats given 30 mg/kg/day had ocular lesions in both eyes characterized by retinal degeneration, opacity of the lens, and retinal edema. Similar but less severe lesions were observed in 80% of female and 22% of male rats fed 12.5 mg/kg/day for 2 years. At doses of 5 mg/kg/day, only corneal lesions were observed. They occurred in 9% of rats studied.

HLR 07/10/02

**LARIAM<sup>®</sup> (mefloquine hydrochloride)**

R<sub>x</sub> only

Manufactured by:  
F. HOFFMANN-LA ROCHE LTD  
Basel, Switzerland

Distributed by:



**Pharmaceuticals**

Roche Laboratories Inc.  
340 Kingsland Street  
Nutley, New Jersey 07110-1199

27898311-0702

Revised: July 2002  
Printed in USA

Copyright © 1999-2002 by Roche Laboratories Inc. All rights reserved.