

**CENTER FOR DRUG EVALUATION AND
RESEARCH**

APPLICATION NUMBER:

761261Orig1s000

LABELING

HIGHLIGHTS OF PRESCRIBING INFORMATION

These highlights do not include all the information needed to use XENPOZYME™ safely and effectively. See full prescribing information for XENPOZYME.

XENPOZYME (olipudase alfa-rpcp) for injection, for intravenous use
Initial U.S. Approval: 2022

WARNING: SEVERE HYPERSENSITIVITY REACTIONS

See full prescribing information for complete boxed warning.

Hypersensitivity Reactions Including Anaphylaxis

- Appropriate medical support measures, including cardiopulmonary resuscitation equipment, should be readily available. If a severe hypersensitivity reaction occurs, XENPOZYME should be discontinued immediately and appropriate medical treatment should be initiated. (5.1)

INDICATIONS AND USAGE

XENPOZYME is a hydrolytic lysosomal sphingomyelin-specific enzyme indicated for treatment of non-central nervous system manifestations of acid sphingomyelinase deficiency (ASMD) in adult and pediatric patients. (1)

DOSAGE AND ADMINISTRATION

- Prior to initiating treatment, verify pregnancy status in females of reproductive potential and obtain baseline transaminase levels. (2.1)
- Consider pretreating with antihistamines, antipyretics, and/or corticosteroids. (2.1)
- Adults: Recommended starting dose is 0.1 mg/kg administered as an intravenous infusion. (2.2)
- Pediatrics: Recommended starting dose is 0.03 mg/kg administered as an intravenous infusion. (2.3)
- See Full Prescribing Information for the recommended dose escalation and maintenance dosage, dosage modifications to reduce the risk of adverse reactions, and preparation and administration instructions. (2.1, 2.2, 2.3, 2.5, 2.6, 2.7)

DOSAGE FORMS AND STRENGTHS

For injection: 20 mg of olipudase alfa-rpcp as a lyophilized powder in a single-dose vial for reconstitution. (3)

CONTRAINDICATIONS

None. (4)

WARNINGS AND PRECAUTIONS

- See boxed warning. (5.1)
- *Infusion-Associated Reactions (IARs)* If severe IARs occur, discontinue XENPOZYME and initiate appropriate medical treatment. (5.2)
- *Elevated Transaminases* Assess ALT and AST within one month prior to initiation of XENPOZYME, within 72 hours prior to any infusion during dose escalation, or prior to the next scheduled XENPOZYME infusion upon resuming treatment following a missed dose. (5.3)
- *Risk of Fetal Malformations During Dosage Initiation or Escalation in Pregnancy* XENPOZYME dosage initiation or escalation, at any time during pregnancy, is not recommended as it may lead to elevated sphingomyelin metabolite levels that may increase the risk of fetal malformations. Advise females of reproductive potential to use effective contraception during treatment and for 14 days after the last dose if XENPOZYME is discontinued. (5.4, 8.1, 8.3)

ADVERSE REACTIONS

- Most common adverse reactions in adult patients (incidence $\geq 10\%$) are headache, cough, diarrhea, hypotension and ocular hyperemia. (6.1)
- Most common adverse reactions in pediatric patients (incidence $\geq 20\%$) are pyrexia, cough, diarrhea, rhinitis, abdominal pain, vomiting, headache, urticaria, nausea, rash, arthralgia, pruritus, fatigue and pharyngitis. (6.1)

To report SUSPECTED ADVERSE REACTIONS, contact Genzyme Corporation at 1-800-745-4447 or FDA at 1-800-FDA-1088 or www.fda.gov/medwatch.

See 17 for PATIENT COUNSELING INFORMATION.

Revised: 8/2022

FULL PRESCRIBING INFORMATION: CONTENTS*

WARNING: SEVERE HYPERSENSITIVITY REACTIONS

1 INDICATIONS AND USAGE

2 DOSAGE AND ADMINISTRATION

- 2.1 Important Recommendations Prior to XENPOZYME Treatment Initiation
- 2.2 Recommended Dosage in Adult Patients
- 2.3 Recommended Dosage in Pediatric Patients
- 2.4 Missed Doses
- 2.5 Dosage and Administration Modifications and Monitoring
- 2.6 Preparation Instructions
- 2.7 Administration Instructions

3 DOSAGE FORMS AND STRENGTHS

4 CONTRAINDICATIONS

5 WARNINGS AND PRECAUTIONS

- 5.1 Hypersensitivity Reactions Including Anaphylaxis
- 5.2 Infusion-Associated Reactions
- 5.3 Elevated Transaminases Levels
- 5.4 Risk of Fetal Malformations During Dosage Initiation or Escalation in Pregnancy

6 ADVERSE REACTIONS

- 6.1 Clinical Trials Experience

8 USE IN SPECIFIC POPULATIONS

- 8.1 Pregnancy

- 8.2 Lactation

- 8.3 Females and Males of Reproductive Potential

- 8.4 Pediatric Use

- 8.5 Geriatric Use

11 DESCRIPTION

12 CLINICAL PHARMACOLOGY

- 12.1 Mechanism of Action

- 12.2 Pharmacodynamics

- 12.3 Pharmacokinetics

- 12.6 Immunogenicity

13 NONCLINICAL TOXICOLOGY

- 13.1 Carcinogenesis, Mutagenesis, Impairment of Fertility

- 13.2 Animal Toxicology and/or Pharmacology

14 CLINICAL STUDIES

- 14.1 Overview of Clinical Trials

- 14.2 Clinical Trial in Adult Patients with ASMD

- 14.3 Clinical Trial in Pediatric Patients with ASMD

- 14.4 Extension Trial in ASMD Pediatric Patients

16 HOW SUPPLIED/STORAGE AND HANDLING

17 PATIENT COUNSELING INFORMATION

*Sections or subsections omitted from the full prescribing information are not listed.

FULL PRESCRIBING INFORMATION

WARNING: SEVERE HYPERSENSITIVITY REACTIONS

Hypersensitivity Reactions Including Anaphylaxis

Patients treated with XENPOZYME have experienced hypersensitivity reactions, including anaphylaxis. Appropriate medical support measures, including cardiopulmonary resuscitation equipment, should be readily available during XENPOZYME administration. If a severe hypersensitivity reaction (e.g., anaphylaxis) occurs, XENPOZYME should be discontinued immediately and appropriate medical treatment should be initiated. In patients with severe hypersensitivity reaction, a desensitization procedure to XENPOZYME may be considered [see *Warnings and Precautions (5.1)*].

1 INDICATIONS AND USAGE

XENPOZYME is indicated for treatment of non-central nervous system manifestations of acid sphingomyelinase deficiency (ASMD) in adult and pediatric patients.

2 DOSAGE AND ADMINISTRATION

2.1 Important Recommendations Prior to XENPOZYME Treatment Initiation

Laboratory Testing

Before initiating XENPOZYME:

- Obtain baseline transaminase (alanine aminotransferase [ALT] and aspartate aminotransferase [AST]) levels in all patients within 1 month prior to treatment initiation [see *Warnings and Precautions (5.3)*].
- Verify pregnancy status in females of reproductive potential [see *Use in Specific Populations (8.1, 8.3)*]

Pretreatment Recommendations

Prior to XENPOZYME administration, consider pretreating with antihistamines, antipyretics, and/or corticosteroids [see *Warnings and Precautions (5.1, 5.2)*].

Weight-Based Dosing Information

The recommended adult and pediatric dosages of XENPOZYME for the dose escalation and maintenance phases [see *Dosage and Administration (2.2, 2.3)*] are based on body weight as follows for patients with a body mass index (BMI):

- Less than or equal to 30, the dosage is based on actual body weight (kg)
- Greater than 30, the dosage is based on adjusted body weight (kg). Calculate an adjusted body weight (kg) based on height in meters as described below:

$$\text{Adjusted body weight (kg)} = (\text{actual height in m})^2 \times 30$$

2.2 Recommended Dosage in Adult Patients

Dose Escalation Phase

The recommended starting dose of XENPOZYME in adults is 0.1 mg/kg.

In order to reduce the risk of hypersensitivity and infusion-associated reactions or elevated transaminase levels, follow the dose escalation regimen in Table 1 [see *Warnings and Precautions* (5.1, 5.2, 5.3)].

Administer XENPOZYME via intravenous infusion every 2 weeks.

Table 1: XENPOZYME Dose Escalation Regimen for Adult Patients*

Adult Patients (18 years and older)	
First dose (Day 1/Week 0)	0.1 mg/kg
Second dose (Week 2)	0.3 mg/kg
Third dose (Week 4)	0.3 mg/kg
Fourth dose (Week 6)	0.6 mg/kg
Fifth dose (Week 8)	0.6 mg/kg
Sixth dose (Week 10)	1 mg/kg
Seventh dose (Week 12)	2 mg/kg
Eighth dose (Week 14) [†]	3 mg/kg (recommended maintenance dose)

* Use actual body weight for patients with a BMI less than or equal to 30. For patients with a BMI greater than 30, calculate adjusted body weight (kg) = (actual height in m)² x 30 [see *Dosage and Administration* (2.1)].

[†] The dose escalation phase includes the first 3 mg/kg dose.

Maintenance Phase

The recommended maintenance dosage of XENPOZYME in adults is 3 mg/kg via intravenous infusion every 2 weeks.

2.3 Recommended Dosage in Pediatric Patients

Dose Escalation Phase

The recommended starting dose of XENPOZYME in pediatric patients is 0.03 mg/kg.

In order to reduce the risk of hypersensitivity and infusion-associated reactions or elevated liver enzyme elevations, follow the dose escalation regimen in Table 2 [see *Warnings and Precautions* (5.1, 5.2, 5.3)].

Administer XENPOZYME via intravenous infusion every 2 weeks.

Table 2: XENPOZYME Dose Escalation Regimen for Pediatric Patients*

Pediatric Patients (0 to 17 years)	
First dose (Day 1/Week 0)	0.03 mg/kg
Second dose (Week 2)	0.1 mg/kg
Third dose (Week 4)	0.3 mg/kg
Fourth dose (Week 6)	0.3 mg/kg
Fifth dose (Week 8)	0.6 mg/kg
Sixth dose (Week 10)	0.6 mg/kg
Seventh dose (Week 12)	1 mg/kg
Eighth dose (Week 14)	2 mg/kg
Ninth dose (Week 16) [†]	3 mg/kg (recommended maintenance dose)

* Use actual body weight for patients with a BMI less than or equal to 30. For patients with a BMI greater than 30, calculate adjusted body weight (kg) = (actual height in m)² x 30 [see *Dosage and Administration* (2.1)].

† The dose escalation phase includes the first 3 mg/kg dose.

Maintenance Phase

The recommended maintenance dosage of XENPOZYME in pediatric patients is 3 mg/kg via intravenous infusion every 2 weeks.

2.4 Missed Doses

A dose is considered missed when it is not administered within 3 days of the scheduled date. When a dose of XENPOZYME is missed, refer to Table 3. Follow the instructions in the “Escalation Phase” or “Maintenance Phase” depending on which phase the patient misses the dose.

Table 3: Dosing Recommendations for XENPOZYME Missed Doses*

Consecutive Missed Doses In:	Escalation Phase	Maintenance Phase
1 missed dose	<ul style="list-style-type: none"> First dose after a missed dose: Administer last tolerated dose Second and subsequent doses after missed dose: Resume dose escalation at next infusion according to Table 1 for adult patients or Table 2 for pediatric patients 	First and subsequent doses after missed dose: Administer maintenance dose
2 consecutive missed doses	<ul style="list-style-type: none"> First dose after missed dose: Administer 1 dose below last tolerated dose Second and subsequent doses after missed dose: Resume dose escalation according to Table 1 for adults or Table 2 for pediatric patients 	<ul style="list-style-type: none"> First dose after missed dose: Administer 1 dose below the maintenance dose Second and subsequent doses after missed dose: Resume the maintenance dose
3 or more consecutive missed doses	First and subsequent doses after missed doses: Resume dose escalation at 0.3 mg/kg and follow Table 1 for adults or Table 2 for pediatric patients	First and subsequent doses after missed doses: Restart dosing at 0.3 mg/kg and follow Table 1 for adult patients or Table 2 for pediatric patients

*At scheduled infusion after a missed dose, if the dose administered is 0.3 or 0.6 mg/kg, administer that dose twice as per Table 1 and 2.

2.5 Dosage and Administration Modifications and Monitoring

- In the event of a *severe* hypersensitivity reaction (e.g., anaphylaxis) or a *severe* infusion-associated reaction (IAR), immediately discontinue XENPOZYME administration and initiate appropriate medical treatment [see *Warnings and Precautions (5.1, 5.2)*].
- In the event of a *mild to moderate* hypersensitivity reaction or a *mild to moderate* IAR, consider temporarily holding or slowing the infusion rate, and/or reducing the XENPOZYME dose. If dose is reduced, re-escalate following dose escalation described in Tables 1 and 2 for adult and pediatric patients, respectively [see *Warnings and Precautions (5.1, 5.2)*].
- If transaminase levels are elevated above baseline and >2 times the ULN prior to the next scheduled administration, the XENPOZYME dose can be adjusted (prior dose repeated or

reduced) or treatment can be temporarily withheld until the liver transaminases return to the patient's baseline value [see *Warnings and Precautions (5.3)*].

2.6 Preparation Instructions

Use aseptic technique during preparation. Reconstitute and dilute XENPOZYME in the following manner:

Reconstitution and Dilution Instructions

1. Determine the number of XENPOZYME vials to be reconstituted based on the calculated dose [see *Dosage and Administration (2.2, 2.3)*].
2. Remove XENPOZYME vials from refrigeration and set aside for approximately 20 to 30 minutes to allow vials to reach room temperature.
3. Reconstitute each vial with 5.1 mL of Sterile Water for Injection, USP by directing the diluent flow to the inside wall of the vial to avoid foaming.
4. Gently roll and tilt vial(s) to reconstitute XENPOZYME and avoid foaming. Each reconstituted vial will yield a 4 mg/mL clear, colorless solution.
5. Visually inspect the reconstituted solution in the vials for particulate matter and discoloration. The solution should be clear and colorless. Discard if the solution is discolored or if visible particulate matter is present.
6. Withdraw the required volume of XENPOZYME from the vial(s) and dilute the XENPOZYME solution for infusion with 0.9% Sodium Chloride Injection, USP in a syringe or infusion bag depending on the volume of infusion (see Table 4).
 - For patients who weigh less than 10 kg receiving 0.03 mg/kg and 0.1 mg/kg and patients who weigh between 10 to 20 kg receiving 0.03 mg/kg dose, the volume of infusion will vary to achieve a fixed final concentration of 0.1 mg/mL (see Table 4). Prepare the required dose diluted to a final concentration of 0.1 mg/mL in a *syringe* for infusion.
 - For all other patient weights and doses, the final concentration will vary to achieve a fixed total volume (see Table 4).
 - For total volume less than or equal to 20 mL prepare a *syringe* for infusion:
 - Inject the required volume of the reconstituted XENPOZYME solution (4 mg/mL) from step 3 slowly down the inside wall of the syringe.
 - Add slowly the quantity sufficient of 0.9% Sodium Chloride Injection, USP to obtain the required total infusion volume (avoid foaming within the syringe).
 - For a total volume of greater than or equal to 50 mL prepare an *infusion bag*:

Add slowly the required volume of the reconstituted XENPOZYME solution (4 mg/mL) from step 3 into the appropriate size 0.9% Sodium Chloride Injection, USP infusion bag (avoid foaming within the bag) to achieve a fixed total volume per Table 4.
7. Gently invert the syringe or the infusion bag to mix. Do not shake. Because this is a protein

solution, slight flocculation (described as thin translucent fibers) occurs occasionally after dilution.

- Vials are for single dose only. Discard any unused solution.

Storage and Handling of the Reconstituted and Diluted Solutions

- If the reconstituted XENPOZYME vials are not used immediately, store refrigerated at 2°C to 8°C (36°F to 46°F) for up to 24 hours or at room temperature at 20°C to 25°C (68°F to 77°F) for up to 12 hours.
- If the diluted solution is not administered immediately, store refrigerated at 2°C to 8°C (36°F to 46°F) for up to 24 hours or at room temperature at 20°C to 25°C (68°F to 77°F) for up to 12 hours (including infusion time).
- Do not freeze.

Table 4: XENPOZYME Infusion Volumes for Pediatric and Adult Patients Based on Body Weight*

	Pediatric Patients (0 to 17 years)			Adult patients (18 years and older)
	Body Weight ≥2 kg and <10 kg)	Body Weight ≥10 kg and <20 kg)	Body Weight ≥20 kg	Body Weight ≥20 kg
XENPOZYME Dose	Total Infusion Volume			
0.03 mg/kg	Actual volume will vary [†] (0.6 mL to 3 mL)	Actual volume will vary [†] (3 mL to 6 mL)	5 mL	NA
0.1 mg/kg	Actual volume will vary [†] (2 mL to 10 mL)	5 mL	10 mL	20 mL
0.3 mg/kg	5 mL	10 mL	20 mL	100 mL
0.6 mg/kg	10 mL	20 mL	50 mL	100 mL
1.0 mg/kg	20 mL	50 mL	100 mL	100 mL
2.0 mg/kg	50 mL	75 mL	200 mL	100 mL
3.0 mg/kg	50 mL	100 mL	250 mL	100 mL

* Use actual or adjusted body weight per patient BMI. Refer to section 2. [see Dosage and Administration (2.2, 2.3)].

† Volume will vary to achieve a final concentration of 0.1 mg/mL

2.7 Administration Instructions

- Prior to administration, inspect the syringe or infusion bag for foaming. If foaming is present, let foam dissipate before administering XENPOZYME.
- Use an in-line low protein-binding 0.2 micron filter during administration. The following materials can be used: polyolefin or polyvinylchloride (PVC) with DEHP for infusion bags, polypropylene for syringes, polyurethane or PVC DEHP-free for infusion sets and polyethersulfone or polytetrafluoroethylene for in-line filters.
- Infuse XENPOZYME using the infusion rates described in Table 5 and Table 6. In absence of infusion-associated reactions, increase infusion rate per the steps of infusion as indicated (+/- 5 minutes). Each step of infusion will last for 20 minutes with the exception of the final step which should last until completion of the infusion volume.
- At the end of the infusion, flush the infusion line with 0.9% Sodium Chloride Injection, USP

using the same infusion rate as the one used for the last part of the infusion.

- Do not infuse XENPOZYME in the same intravenous line with other products.

Table 5: XENPOZYME Infusion Rates for Adult Patients

Dose	Infusion Rate			
	step 1	step 2	step 3	step 4
0.1 mg/kg	20 mL/hour	60 mL/hour	NA	NA
0.3 to 3 mg/kg	3.33 mL/hour	10 mL/hour	20 mL/hour	33.33 mL/hour

NA: Not applicable.

Start infusion at step 1 and in absence of infusion-associated reaction increase infusion rate sequentially per the steps of infusion.

Table 6: XENPOZYME Infusion Rates for Pediatric Patients

Dose	Infusion rate			
	step 1	step 2	step 3	step 4
0.03 mg/kg	0.1 mg/kg/hour for the full length of the infusion	NA	NA	NA
0.1 mg/kg	0.1 mg/kg/hour	0.3 mg/kg/hour	NA	NA
0.3 mg/kg	0.1 mg/kg/hour	0.3 mg/kg/hour	0.6 mg/kg/hour	NA
0.6 mg/kg	0.1 mg/kg/hour	0.3 mg/kg/hour	0.6 mg/kg/hour	1 mg/kg/hour
1 mg/kg				
2 mg/kg				
3 mg/kg				

NA: Not applicable.

Start infusion at step 1 and in absence of infusion-associated reactions increase infusion rate sequentially per the steps of infusion.

Home Infusion

Home administration under the supervision of a healthcare provider may be considered for patients on maintenance dose [see *Dosage and Administration (2.2, 2.3)*] and who are tolerating their infusion well. The decision to have patients moved to home infusion should be made after evaluation and recommendation by a physician.

Dose and infusion rates should remain constant for home administration and cannot be changed without supervision of a physician. In case of missed doses or delayed infusion, a physician should be contacted.

3 DOSAGE FORMS AND STRENGTHS

For injection: 20 mg of olipudase alfa-rpcp as a sterile, white to off white lyophilized powder in a single-dose vial for reconstitution.

4 CONTRAINDICATIONS

None.

5 WARNINGS AND PRECAUTIONS

5.1 Hypersensitivity Reactions Including Anaphylaxis

Prior to XENPOZYME administration, consider pretreating with antihistamines, antipyretics, and/or corticosteroids. Appropriate medical support measures, including cardiopulmonary resuscitation equipment, should be readily available during XENPOZYME administration.

If a *severe* hypersensitivity reaction (e.g., anaphylaxis) occurs, discontinue XENPOZYME immediately and initiate appropriate medical treatment. Consider the risks and benefits of re-administering XENPOZYME following severe hypersensitivity reactions (including anaphylaxis). One patient has been rechallenged using slower infusion rates at a dosage lower than the recommended dosage. In patients with severe hypersensitivity reaction, a tailored desensitization procedure to XENPOZYME may be considered. If the decision is made to readminister XENPOZYME, ensure the patient tolerates the infusion. If the patient tolerates the infusion, the dosage (dose and/or the rate) may be increased to reach the approved recommended dosage.

If a *mild or moderate* hypersensitivity reaction occurs, the infusion rate may be slowed or temporarily withheld, and/or the XENPOZYME dose reduced [see *Dosage and Administration (2.5)*].

Hypersensitivity reactions, including anaphylaxis, have been reported in olipudase alfa-treated patients. One 18-month-old XENPOZYME-treated patient experienced an anaphylactic reaction during the sixth infusion in the dose escalation period in Trial 2 [see *Adverse Reactions (6.1)*]. Additionally, a 16-month-old patient with ASMD type A, treated with a version of olipudase alfa manufactured from a different process, experienced two anaphylactic reactions during the fifth and sixth infusions in the dose escalation period; the patient received an immune tolerance induction therapy prior to treatment. In both of these pediatric patients who had anaphylaxis, anti-olipudase alfa-rpcp IgE (IgE ADA) and IgG (IgG ADA) antibodies were detected [see *Adverse Reactions (6.1) and Clinical Pharmacology (12.6)*].

Hypersensitivity related reactions that were mild to moderate in severity occurred in 10 (33%) XENPOZYME-treated adult patients and 4 (50%) XENPOZYME-treated pediatric patients in clinical trials. Hypersensitivity reactions in adults included urticaria, pruritus, erythema, rash, rash erythematous, eczema, angioedema and erythema nodosum. Hypersensitivity reactions in pediatric patients included urticaria, pruritus, rash, erythema and localized edema [see *Adverse Reactions (6)*].

- Consider testing for IgE ADA in XENPOZYME-treated patients who experienced severe hypersensitivity reactions, including anaphylaxis [see *Adverse Reactions (6.1)*]. Testing for antibodies against olipudase alfa-rpcp are available through Genzyme Corporation (at 1-800-745-4447).
- Consider other clinical laboratory testing such as serum tryptase and complement activation in patients who experience anaphylaxis.

5.2 Infusion-Associated Reactions

Antihistamines, antipyretics, and/or corticosteroids may be given prior to XENPOZYME administration to reduce the risk of infusion-associated reactions (IARs). However, IARs may still occur in patients after receiving pretreatment.

- If *severe* IARs occur, discontinue XENPOZYME immediately and initiate appropriate medical treatment. Consider the risks and benefits of re-administering XENPOZYME following severe IARs. One patient has been rechallenged using slower infusion rates at a dose lower than the recommended dose. Once a patient tolerates the infusion, the dose may be increased to reach the recommended dose.
- If a *mild or moderate* IAR occurs, the infusion rate may be slowed or temporarily withheld, and/or the XENPOZYME dosage may be reduced [see *Dosage and Administration (2.5)*].

IARs occurred in approximately 75% of pediatric and 50% of adult XENPOZYME-treated patients in the clinical trials; a severe IAR occurred in one (12.5%) of the pediatric patients. The most frequent IARs in:

- $\geq 10\%$ of adult patients were headache, pruritus, vomiting and urticaria
- $>20\%$ of pediatric patients were urticaria, erythema, headache, nausea, pyrexia and vomiting

Acute phase reaction (APR), an acute inflammatory response accompanied by elevations in inflammatory serum protein concentrations, was observed in one XENPOZYME-treated adult and one XENPOZYME-treated pediatric patient. Most of the APRs occurred at 48 hours post infusion during the dose escalation period. Elevations of C-reactive protein, calcitonin, and IL-6, and reduction of serum iron were observed. The most common clinical symptoms associated with APRs were pyrexia, vomiting, and diarrhea. All events can be managed as other IARs.

5.3 Elevated Transaminases Levels

XENPOZYME may be associated with elevated transaminases (ALT, AST, or both) within 24 to 48 hours after infusion. Elevated transaminase levels were reported in 4 (13%) XENPOZYME-treated adults and 1 (13%) XENPOZYME-treated pediatric patient during the dose escalation phase in clinical trials. At the time of the next scheduled infusion, these elevated transaminase levels generally returned to levels observed prior to the XENPOZYME infusion [see *Adverse Reactions (6.1)*].

To manage the risk of elevated transaminase levels, assess ALT and AST within one month prior to initiation of XENPOZYME, within 72 hours prior to any infusion during dose escalation, which includes the first 3 mg/kg dose outlined in Tables 1 and 2, or prior to the next scheduled XENPOZYME infusion upon resuming treatment following a missed dose.

If either the baseline or pre-infusion transaminase level (during the dose escalation phase) is >2 times the ULN, repeat transaminase levels within 72 hours after the end of the infusion. If the pre-infusion transaminase levels are elevated above baseline and >2 times the ULN prior to the next scheduled administration, the XENPOZYME dose can be reduced (repeat prior lower dose or reduce the dose) or XENPOZYME can be temporarily withheld until the liver transaminases return to the patient's baseline value.

Upon reaching the recommended maintenance dose, transaminase testing is recommended to be continued as part of routine clinical management of ASMD.

5.4 Risk of Fetal Malformations During Dosage Initiation or Escalation in Pregnancy

There is no evidence that olipudase alfa-rpcp crosses the human placenta. However, published literature reports that early embryonic exposure to a metabolite of sphingomyelin (ceramide) or the S1P receptor modulator fingolimod can produce exencephaly in chicks and mice, respectively. In animal reproduction studies, exencephaly, a neural tube defect occurring in the first trimester of pregnancy, was observed in mouse fetuses at exposures less than the exposure at the maximum recommended human dose of olipudase alfa-rpcp.

XENPOZYME dosage initiation or escalation, at any time during pregnancy, is not recommended as it may lead to elevated sphingomyelin metabolite levels that may increase the risk of fetal malformations [see *Use in Specific Population (8.1)*, *Clinical Pharmacology (12.2)*]. The decision to continue or discontinue XENPOZYME maintenance dosing in pregnancy should consider the female's need for XENPOZYME, the potential drug-related risks to the fetus, and the potential adverse outcomes from untreated maternal ASMD disease.

Verify the pregnancy status in females of reproductive potential prior to initiating XENPOZYME treatment. Advise females of reproductive potential to use effective contraception during treatment and for 14 days after the last dose if XENPOZYME is discontinued. [see *Use in Specific Populations (8.3)*].

6 ADVERSE REACTIONS

The following clinically significant adverse reactions are described elsewhere in the labeling:

- Hypersensitivity Reactions Including Anaphylaxis [see *Warnings and Precautions (5.1)*]
- Infusion-Associated Reactions (IARs) [see *Warnings and Precautions (5.2)*]
- Elevated Transaminase Level [see *Warnings and Precautions (5.3)*]

6.1 Clinical Trials Experience

Because clinical trials are conducted under widely varying conditions, adverse reaction rates observed in the clinical trials of a drug cannot be directly compared to rates in the clinical trials of another drug and may not reflect the rates observed in practice.

The pooled safety analysis from 3 clinical trials included a total of 38 XENPOZYME-treated patients (30 adult and 8 pediatric patients) with age range from 1.5 to 59 years old receiving intravenous doses up to 3 mg/kg every 2 weeks [see *Clinical Studies (14)*]. The median exposure duration was 2.5 years (range: 0.4 to 3.7 years) in adult patients and 2.7 years (range: 2.5 to 3.2 years) in pediatric patients.

Serious adverse reactions of anaphylactic reaction were reported in 2 (25%) XENPOZYME-treated pediatric patients.

Most frequently reported adverse drug reactions in adults (incidence $\geq 10\%$) were headache, cough, diarrhea, hypotension, and ocular hyperemia.

Most frequently reported adverse drug reactions in pediatric patients (incidence $\geq 20\%$) were pyrexia, cough, diarrhea, rhinitis, abdominal pain, vomiting, headache, urticaria, nausea, rash, arthralgia, pruritus, fatigue and pharyngitis.

Adult patients with ASMD type B and type A/B (Trial 1)

In Trial 1, 13 adult patients received XENPOZYME once every 2 weeks for 52 weeks (primary

analysis period (PAP)) at dosages escalating from 0.1 mg/kg to a target dose of 3 mg/kg [see *Clinical Studies (14.2)*].

Adverse reactions that occurred in at least 7% of XENPOZYME-treated adult patients during the PAP are described in Table 7.

Table 7: Adverse Reactions Occurring at >7% in Adult Patients with ASMD During the 52-Week Primary Analysis Period in Trial 1

Adverse Reaction	XENPOZYME N=13	Placebo N=18
Headache	7 (54%)	8 (44%)
Cough	4 (31%)	2 (11%)
Diarrhea	2 (15%)	2 (11%)
Hypotension	2 (15%)	2 (11%)
Ocular hyperemia	2 (15%)	1 (6%)
Erythema	1 (8%)	1 (6%)
Asthenia	1 (8%)	1 (6%)
Pharyngitis	1 (8%)	1 (6%)
Dyspnea	1 (8%)	0
Urticaria	1 (8%)	0
Papule	1 (8%)	0
Myalgia	1 (8%)	0
Throat irritation	1 (8%)	0
C-reactive protein abnormal	1 (8%)	0

Pediatric Patients with ASMD type B and type A/B (Trial 2 and Trial 3)

In Trial 2, 8 pediatric patients less than or equal to 17 years of age received XENPOZYME intravenously once every 2 weeks for 64 weeks [see *Clinical Studies (14.3)*]. After 64 weeks, all pediatric patients entered into Trial 3.

Adverse reactions that occurred in at least 13% of pediatric patients are described in Table 8.

Table 8: Adverse Reactions Occurring at ≥13% in XENPOZYME-Treated Pediatric Patients with ASMD in Trial 2* and Trial 3 for an Overall Observation Period of 2.5 to 3.2 Years

Adverse Reactions	XENPOZYME N=8
Pyrexia	8 (100%)
Cough	6 (75%)
Diarrhea	6 (75%)
Rhinitis	6 (75%)
Abdominal pain	5 (63%)
Vomiting	4 (50%)
Headache	4 (50%)
Urticaria	4 (50%)
Nausea	3 (38%)
Rash	3 (38%)
Arthralgia	3 (38%)
Pruritus	2 (25%)
Fatigue	2 (25%)

Pharyngitis	2 (25%)
C-reactive protein increased	1 (13%)
Hypotension	1 (13%)
Anaphylactic reaction	1 (13%)
Hypersensitivity	1 (13%)
Infusion site swelling	1 (13%)
Tachycardia	1 (13%)
Pharyngeal swelling	1 (13%)

Abdominal pain includes abdominal pain and abdominal pain upper

Fatigue includes fatigue and asthenia

Rash includes rash and erythema

*Duration of treatment in Trial 2 was 64 weeks. All patients continued into Trial 3.

Treatment related serious adverse reactions, hypersensitivity reactions including anaphylaxis, and IARs occurred within 24 hours of infusion and were observed in a higher percentage of pediatric patients than in adult patients.

Laboratory Adverse Reaction

Elevated transaminase levels ranging from 3 times to 14 times the upper limit of normal (ULN) were reported in 4 (13%) adults and 1 (13%) pediatric patient during the XENPOZYME dose escalation phase in clinical trials.

Immunogenicity: Antidrug Antibody-Associated Adverse Reactions

In Trial 1, infusion-associated reactions (including hypersensitivity reactions) occurred in a higher percentage in XENPOZYME-treated patients who developed IgG ADA compared to those who did not develop IgG ADA (73% versus 44%) [see *Clinical Pharmacology (12.6)* and *Clinical Studies (14.2)*].

In Trial 2, one XENPOZYME-treated pediatric patient (18-months old) experienced an anaphylactic reaction during the sixth infusion and developed IgE ADA and the highest IgG ADA titers (ADA peak titer 1,600) of the patients in this trial. After treatment discontinuation, XENPOZYME was resumed four months later using a diluted drug solution and a desensitization procedure.

One pediatric patient (16-months old) with ASMD type A, treated with a version of olipudase alfa manufactured from a different process, experienced anaphylactic reactions (both during the fifth and sixth infusions) and developed IgG ADA (highest titer 1,600) and IgE ADA [see *Warnings and Precautions (5.1)*].

8 USE IN SPECIFIC POPULATIONS

8.1 Pregnancy

Risk Summary

Based on findings from animal reproduction studies, XENPOZYME may cause embryo-fetal harm when administered to a pregnant female. XENPOZYME dosage initiation or escalation, at any time during pregnancy, is not recommended as it may lead to elevated sphingomyelin metabolite levels that may increase the risk of fetal malformations (*see Data*), [see *Clinical Pharmacology (12.2)*]. However, the decision to continue or discontinue XENPOZYME maintenance dosing in pregnancy should consider the female's need for XENPOZYME, the

potential drug-related risks to the fetus, and the potential adverse outcomes from untreated maternal ASMD disease.

In an embryo-fetal toxicity study in pregnant mice, a rare malformation (exencephaly) was observed in offspring at an exposure less than the exposure at the maximum recommended human dose (MRHD) of olipudase alfa-rpcp (*see Data*).

There are no available data on XENPOZYME use in pregnant females to evaluate for a drug associated risk of major birth defects, miscarriage, or other adverse maternal or fetal outcomes. Advise the pregnant female of the potential risk to the fetus.

The background risk of major birth defects and miscarriage for the indicated population is unknown. All pregnancies have a background risk of birth defect, miscarriage, or other adverse outcomes. In the U.S. general population, the estimated background risk of major birth defects and miscarriage in clinically recognized pregnancies is 2% to 4% and 15% to 20%, respectively.

Data

Animal Data

In an embryo-fetal development study in pregnant mice, olipudase alfa-rpcp was administered intravenously at doses of 3, 10, or 30 mg/kg daily from gestation day (GD) 6 through GD 15. Exencephaly was observed in 1 litter at each of the 10 and 30 mg/kg dose groups (2 and 3 fetuses, respectively). These data are consistent with published literature reports that brief embryonic exposures to sphingomyelin metabolites or a sphingosine-1-phosphate (S1P) receptor modulator produced neural tube defects, including exencephaly, in chicks and mice.

The developmental No Observed Adverse Effect Level (NOAEL) is 3 mg/kg. The AUC associated with this dose is 0.14-fold the clinical exposure at the MRHD. The developmental Lowest-Observed-Adverse-Effect Level (LOAEL), 10 mg/kg, is also associated with an exposure that is less than the clinical exposure at the MRHD.

In an embryo-fetal development study in pregnant rabbits, olipudase alfa-rpcp was administered intravenously at doses of 3, 10, or 30 mg/kg daily from GD 6 through GD 19. There was no maternal or developmental toxicity. The developmental NOAEL was 30 mg/kg; the AUC₀₋₂₄ at this dose is approximately 10.5-fold the exposure at the MRHD.

In a study of pre- and postnatal development in mice, olipudase alfa-rpcp was administered intravenously every other day from GD 6 through GD 18; then resumed every other day after parturition, from Lactation Day (LD) 1 through LD 19. Olipudase alfa-rpcp did not induce any effect on maternal reproductive function or on developmental and reproductive parameters of male and female offspring. Therefore, the maternal and developmental NOAELs are 30 mg/kg. Exposures at this dose, based on the embryo-fetal development study, were estimated to be approximately 1.5-fold the MRHD of olipudase alfa-rpcp.

8.2 Lactation

Risk Summary

There are no data on the presence of olipudase alfa-rpcp in human milk, the effects on the breastfed infant, or the effects on milk production. Olipudase alfa-rpcp is present in animal milk. (*see Data*). When a drug is present in animal milk, it is likely that the drug will be present in human milk. The developmental and health benefits of breastfeeding should be considered along

with the mother's clinical need for XENPOZYME and any potential adverse effects on the breastfed infant from XENPOZYME or from the underlying maternal condition.

Data

Olipudase alfa-rpcp was administered as a single intravenous dose (3 mg/kg) to lactating CD1 mice on post-partum day 7. Milk was not evaluated until post-partum day 9, at which time concentrations of olipudase alfa-rpcp detected were approximately 1.3% the estimated maximal maternal plasma concentration.

8.3 Females and Males of Reproductive Potential

XENPOZYME may cause embryo-fetal harm when administered during the first trimester of pregnancy [see *Use in Specific Populations (8.1)*].

Pregnancy Testing

Verify the pregnancy status in females of reproductive potential prior to initiating XENPOZYME.

Contraception

Females

Advise females of reproductive potential to use effective contraception during treatment and for 14 days after the last dose if XENPOZYME is discontinued.

8.4 Pediatric Use

The safety and effectiveness of XENPOZYME for the treatment of non-central nervous system manifestations of acid sphingomyelinase deficiency (ASMD) have been established in pediatric patients down to birth.

Use of XENPOZYME for this indication is supported by evidence from an adequate, and well-controlled trial (Trial 1) in adults with supportive efficacy, safety, and tolerability data in pediatric patients (Trial 2 and Trial 3) [see *Adverse Reactions (6.1)* and *Clinical Studies (14.2, 14.3, 14.4)*].

Compared to adults, a higher percentage of pediatric patients experienced treatment related serious adverse reactions, anaphylaxis, hypersensitivity reactions, and IARs that occurred within 24 hours of infusion [see *Adverse Reactions (6.1)*]. Two pediatric patients, an 18 month old receiving XENPOZYME and a 16 month old with ASMD type A that received a version of olipudase alfa manufactured from a different process developed anaphylaxis [see *Warnings and Precautions (5.1)*].

8.5 Geriatric Use

Of the total number of XENPOZYME-treated adult patients in these trials, 1 (3%) was 65 to 74 years of age, and none were 75 years of age and older. [see *Clinical Studies (14)*].

Clinical trials of XENPOZYME did not include sufficient numbers of patients 65 years of age and older to determine whether they respond differently from younger adult patients.

11 DESCRIPTION

Olipudase alfa-rpcp is a hydrolytic lysosomal sphingomyelin-specific enzyme consisting of

570 amino acids produced in a Chinese hamster ovary cell line by recombinant DNA technology. The molecular weight of olipudase alfa-rpcp is approximately 76 kDa.

XENPOZYME (olipudase alfa-rpcp) for injection is supplied as a sterile white to off-white lyophilized powder for reconstitution and dilution to be administered via intravenous infusion. XENPOZYME is supplied in single-dose vials. Each vial contains 20 mg olipudase alfa-rpcp, dibasic sodium phosphate (4.47 mg), methionine (74.6 mg), monobasic sodium phosphate (8.17 mg), and sucrose (250 mg). The pH is 6.5 after reconstitution.

12 CLINICAL PHARMACOLOGY

12.1 Mechanism of Action

ASMD is a lysosomal storage disease that results from reduced activity of the enzyme acid sphingomyelinase (ASM), caused by pathogenic variants in the sphingomyelin phosphodiesterase 1 gene. ASM degrades sphingomyelin to ceramide and phosphocholine. The deficiency of ASM causes an intra-lysosomal accumulation of sphingomyelin (as well as cholesterol and other cell membrane lipids) in various tissues. XENPOZYME provides an exogenous source of ASM.

XENPOZYME is not expected to cross the blood-brain barrier or modulate the CNS manifestations of ASMD.

12.2 Pharmacodynamics

Plasma Ceramide Levels

Ceramide is elevated in plasma of adult and pediatric patients with ASMD. Plasma ceramide levels showed a transient increase after each administration (post infusion) of XENPOZYME. In the dose escalation phase, plasma ceramide levels were substantially increased compared to the baseline level. Plasma ceramide levels gradually decreased following repeated administration of XENPOZYME and the pre-infusion levels were generally lower than the baseline level during the maintenance phase of treatment.

- In adult patients with ASMD in Trial 1 [see *Clinical Studies (14.2)*], the mean (standard deviation, SD) pre-infusion plasma ceramide concentration was 3.7 (1.4) mg/L at baseline and decreased to 2.2 (0.6) mg/L at Week 52 following treatment with XENPOZYME.
- In pediatric patients with ASMD in Trial 2 [see *Clinical Studies (14.3)*], the mean (SD) pre-infusion plasma ceramide concentration was 4.7 (0.9) mg/L at baseline and decreased to 1.8 (0.3) mg/L at Week 52 following treatment with XENPOZYME.

Plasma Lysosphingomyelin Levels

Lysosphingomyelin is substantially elevated in plasma of adult and pediatric patients with ASMD. Plasma lysosphingomyelin levels decreased after repeated administration of XENPOZYME.

- In adult patients with ASMD in Trial 1 [see *Clinical Studies (14.2)*], the mean (SD) pre-infusion plasma lysosphingomyelin concentration was 379 (204) mcg/L at baseline and decreased to 99 (118) mcg/L at Week 52 following treatment with XENPOZYME.

- In pediatric patients with ASMD in Trial 2 [see *Clinical Studies (14.3)*], the mean (SD) pre-infusion plasma lysosphingomyelin concentration was 625 (339) mcg/L at baseline and decreased to 80 (47) mcg/L at Week 52 following treatment with XENPOZYME.

Liver Sphingomyelin Content

In adult patients, the liver sphingomyelin content, as assessed by histopathology, decreased from baseline to Week 52 in the XENPOZYME treatment group compared to an increase in the placebo group.

12.3 Pharmacokinetics

In adult patients with ASMD, the mean (SD) maximum plasma olipudase alfa-rpcp concentration (C_{\max}) and area under the concentration-time curve (AUC) at steady state were 30 (5) mcg/mL and 607 (120) mcg·h/mL, respectively, at the recommended maintenance dose of 3 mg/kg administered once every 2 weeks. Olipudase alfa-rpcp C_{\max} and AUC increase proportionally over a dose range of 0.1 to 3 mg/kg (0.03 to 1 times the approved recommended maintenance dose).

Distribution

The mean (SD) volume of distribution of olipudase alfa-rpcp was 13 (2) L in adult patients with ASMD.

Elimination

The mean (SD) clearance of olipudase alfa-rpcp was 0.33 (0.07) L/h and the mean half-life ($t_{1/2}$) ranged from 32 to 38 hours in adult patients with ASMD.

Metabolism

The metabolic pathway of olipudase alfa-rpcp has not been characterized. Olipudase alfa-rpcp is expected to be metabolized into small peptides and amino acids via catabolic pathways.

Specific Populations

Pediatric Patients

In pediatric patients (1.5 to 17.5 years of age) with ASMD, the mean (SD) C_{\max} was 24.3 (2.8) mcg/mL and the mean (SD) AUC was 449 (70) mcg·h/mL at the recommended maintenance dose of 3 mg/kg administered once every 2 weeks.

12.6 Immunogenicity

The observed incidence of anti-drug antibodies is highly dependent on the sensitivity and specificity of the assay. Differences in assay methods preclude meaningful comparisons of the incidence of anti-drug antibodies in the studies described below with the incidence of anti-drug antibodies in other studies, including those of olipudase alfa-rpcp or of other olipudase alfa products.

Following 0.4 to 3.7 years of XENPOZYME treatment in Trial 1 [see *Clinical Studies (14.2)*], 9 out of 30 (30%) XENPOZYME-treated adult patients with ASMD developed anti-olipudase alfa-rpcp IgG antibodies (referred to as IgG ADA). The median time to seroconversion from first XENPOZYME infusion was approximately 8 weeks. One out of these 9 (11%) adult patients had neutralizing antibodies (NAb) that inhibited the olipudase alfa-rpcp enzyme activity. None of

these 9 patients had NAb that inhibit the cellular uptake of olipudase alfa-rpcp.

Following 2.5 to 3.2 years of XENPOZYME treatment in Trial 2 and 3 [see *Clinical Studies (14.3)*], 6 out of 8 (75%) XENPOZYME-treated pediatric patients with ASMD developed IgG ADA. The median time to seroconversion from first XENPOZYME infusion was 10 weeks. One out of the 6 (17%) pediatric patients developed NAb that inhibited olipudase alfa-rpcp enzyme activity. None of these 6 patients had NAb that inhibited the cellular uptake of olipudase alfa-rpcp.

Infusion-associated reactions (including hypersensitivity reactions) occurred in a higher percentage in XENPOZYME-treated patients who developed ADA compared to those who did not develop ADA [see *Warnings and Precautions (5.1)* and *Adverse Reactions (6.1)*].

There was no identified clinically significant effect of ADA on pharmacokinetics of XENPOZYME.

13 NONCLINICAL TOXICOLOGY

13.1 Carcinogenesis, Mutagenesis, Impairment of Fertility

Carcinogenesis

Studies to evaluate the carcinogenic potential of olipudase alfa-rpcp have not been conducted.

Mutagenesis

Studies to evaluate the mutagenic potential of olipudase alfa-rpcp have not been conducted.

Impairment of Fertility

Intravenous administration of olipudase alfa-rpcp every other day at doses up to 30 mg/kg had no adverse effects in a combined study of fertility in male and female mice. Exposures at this dose, based on the embryo-fetal development study, were estimated to be approximately 1.5-fold those of the MRHD of olipudase alfa-rpcp.

13.2 Animal Toxicology and/or Pharmacology

In acid sphingomyelinase knockout (ASMKO) mice (a disease model of ASMD), mortality was observed after a single dose ≥ 10 mg/kg administered as an IV bolus injection. Observations (lethargy, coolness to touch, and unwillingness to move), combined with the adrenal hemorrhage, suggested that hypotensive shock may be the cause of death. These findings were accompanied by necrosis and apoptosis in the liver and adrenal gland, elevations of ceramide, sphingosine and sphingosine 1-phosphate in the serum, catabolites of accumulated sphingomyelin as well as elevations in the serum concentrations of inflammatory mediators, such as cytokines and acute phase proteins.

In ASMKO mice, a dose-dependent reduction in heart rate accompanied by a decrease in motor activity and followed by a slow decline in blood pressure was noted after a single IV administration at 3, 10, and 20 mg/kg. After 2 doses of olipudase alfa-rpcp at 3 and 10 mg/kg to ASMKO mice, a slight decline in heart rate was noted following the second administration.

Repeated dose studies in adult ASMKO mice show that administration of olipudase alfa-rpcp via a dose escalation regimen, (3 mg/kg administered IV every other day, followed by a single IV dose of 20 mg/kg 3 days later) did not result in toxicity. The lack of adverse findings in BALB/c, C57BL/6 mice, rats, dogs, and monkeys at comparable olipudase alfa-rpcp doses suggested that

the dose-related toxicity observed in ASMKO mice may be due to the rate and amount of substrate degradation.

14 CLINICAL STUDIES

14.1 Overview of Clinical Trials

The efficacy of XENPOZYME for the treatment of non-central nervous system manifestations of acid sphingomyelinase deficiency (ASMD) has been evaluated in 3 clinical trials involving a total of 61 patients with ASMD:

- Trial 1 in adult patients (NCT02004691),
- Trial 2 in pediatric patients (NCT02292654), and
- Trial 3 a long-term trial in pediatric patients (NCT02004704).

14.2 Clinical Trial in Adult Patients with ASMD

Trial 1 was a multicenter, randomized, double-blinded, placebo-controlled, repeat-dose phase II/III trial in adult patients with ASMD (clinical diagnosis consistent with ASMD type B and A/B). In this trial, patients received either XENPOZYME or placebo. Treatment was administered in both groups as an intravenous infusion once every 2 weeks. XENPOZYME was dosed as follows: 0.1 mg/kg (Day 1, Week 0), 0.3 mg/kg (Weeks 2 and 4), 0.6 mg/kg (Weeks 6 and 8), 1 mg/kg (Week 10), 2 mg/kg (Week 12), and then a maintenance dose of 3 mg/kg (Week 14 onwards). The trial was divided into 2 consecutive periods: a randomized placebo-controlled, double-blinded primary analysis period (PAP) which lasted to Week 52, followed by an extension treatment period (ETP) for up to 4 years. Patients randomized to the placebo arm in the PAP crossed over to receive XENPOZYME treatment in the ETP to reach the targeted dose of 3 mg/kg, while patients in the original XENPOZYME arm continued treatment.

Patients enrolled in the trial had a diffusion capacity of the lungs for carbon monoxide (DLco) $\leq 70\%$ of the predicted normal value and a spleen volume ≥ 6 multiples of normal (MN) measured by magnetic resonance imaging (MRI). The trial population included 87% White, 7% Asian and 7% other; for ethnicity, 32% identified as Hispanic/Latino, 65% as non-Hispanic/Latino and 3% were not reported.

Five males and 13 females with a median age of 34 years (range: 18 to 66) were included in the placebo arm and 8 males and 5 females with a median age of 34 years (range: 20 to 59) were included in the XENPOZYME arm. The XENPOZYME and placebo groups included 1 patient (8%) and 2 patients (11%) with mild renal impairment (60 mL/minute \leq creatinine clearance < 90 mL/minute), respectively. There were no patients with moderate or severe renal impairment.

Key efficacy endpoints included assessment of % predicted DLco, spleen volume, liver volume and platelet count.

At Week 52 during the PAP, an increase of 21% in the mean percent change in % predicted DLco was observed in the XENPOZYME-treated patients compared to the placebo-treated patients (Table 9). A reduction in spleen volume of 39% was observed in the XENPOZYME-treated patients compared to the placebo-treated patients. The changes in % predicted DLco and spleen volume were noted at Week 26 of treatment, the first post-dose endpoint assessment (see Figures 1 and 2).

A decrease in mean liver volume and an increase in mean platelet count were noted in the XENPOZYME-treated patients compared to the placebo-treated patients at Week 52 (see Table 9).

Table 9: Observed Value and Percentage Change from Baseline to Week 52 in Key Endpoints in Adult Patients with ASMD Type B, A/B on XENPOZYME or Placebo (Trial 1)

	Placebo	XENPOZYME	Difference [95% CI]
DLco			
n	18	13	
Mean % predicted DLco at baseline (SD)	48.5 (10.8)	49.1 (9.7)	NA
n	17	12	
Mean % predicted DLco at Week 52 (SD)	49.9 (11.1)	59.4 (9.6)	NA
n	17	12	
LS Mean Percent change in % predicted DLco at Week 52 (SE)	3.0 (3.3)	23.9 (3.8)	20.9 (5.0)* [10.6, 31.2]
Spleen volume			
n	18	13	
Mean spleen volume (MN) at baseline (SD)	11.2 (3.8)	11.5 (4.7)	NA
n	17	13	
Mean spleen volume (MN) at Week 52 (SD)	11.2 (4.2)	7.2 (3.9)	NA
n	17	13	
LS Mean Percent change in Spleen Volume (in MN) at Week 52 (SE)	0.5 (2.62)	-38.9 (3.0)	-39.4 (4.0) [†] [-47.6, -31.2]
Liver volume			
n	18	13	
Mean liver volume (MN) at baseline (SD)	1.6 (0.5)	1.4 (0.3)	NA
n	17	12	
Mean liver volume (MN) at Week 52 (SD)	1.6 (0.5)	1.0 (0.2)	NA
n	17	12	
LS Mean Percent change in Liver volume from baseline to Week 52 (SE)	-1.8 (2.7)	-26.5 (3.2)	-24.7 (4.2) [†] [-33.4, -16.1]
Platelet count			
n	18	13	
Mean platelet count (10 ⁹ /L) at baseline (SD)	115.6 (36.3)	109.3 (30.6)	NA
n	16	13	
Mean platelet count (10 ⁹ /L) at Week 52 (SD)	120.2 (43.2)	126.4 (29.0)	NA
n	16	13	
LS Mean Percent change in Platelet Count from baseline to Week 52 (SE)	2.7 (4.5)	18.3 (5.0)	+15.6 (6.7) [‡] [1.8, 29.4]

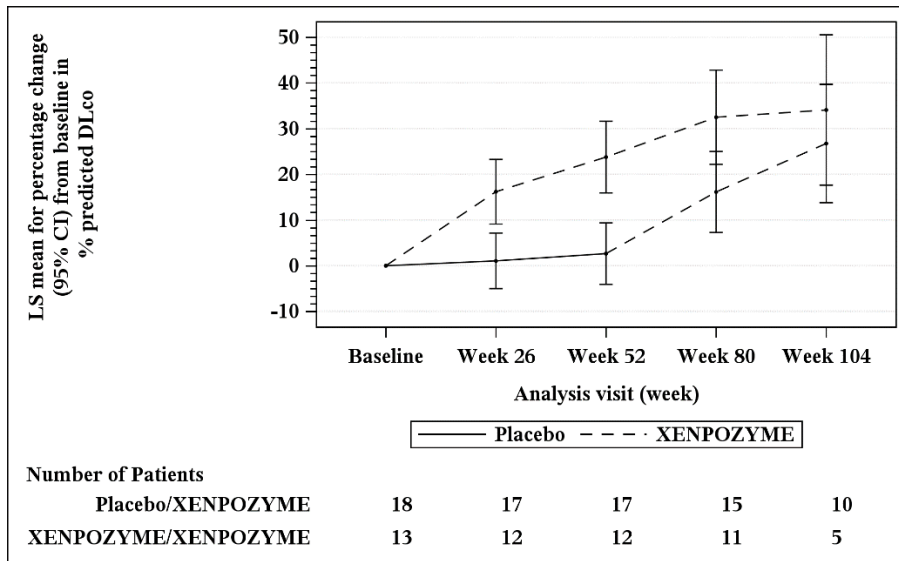
Nominal p value: *p value = 0.0003; [†] p value <0.0001; [‡] p value= 0.0280

Seventeen of 18 patients previously receiving placebo and 13 of 13 patients previously treated with XENPOZYME for 52 weeks (in the PAP) started or continued treatment with XENPOZYME, respectively, for up to 4 years. At Week 104, patients initially randomized to placebo had received XENPOZYME for 52 weeks and demonstrated the following LS mean (SE) percent changes in clinical parameters from baseline (before first administration of XENPOZYME): increase in % predicted DLco was 26.8% (6.2) (Figure 1); reduction in spleen

volume (MN) was 36.5% (2.5) (Figure 2); reduction in liver volume (MN) was 29.5 (2.6); and increase in platelet count was 19.5 (6.7).

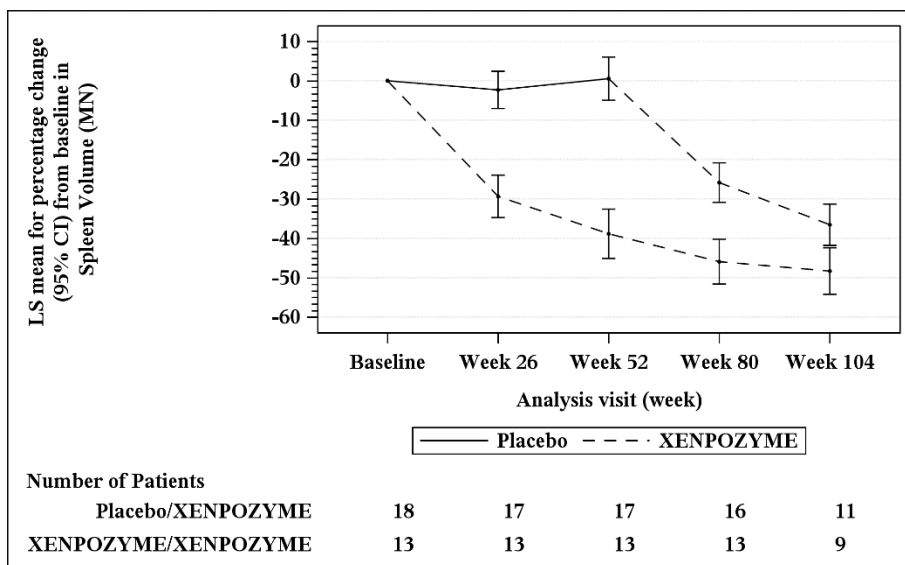
Patients in the previous XENPOZYME group demonstrated improvement from baseline to Week 104 in the following parameters: LS mean (SE) percent increase in % predicted DLco was 34.1% (7.9) (Figure 1); LS mean (SE) percent reduction in spleen volume (MN) was 48.3 (2.9) (Figure 2); LS mean (SE) percent reduction in liver volume (MN) was 31.7 (2.9); LS mean (SE) percent increase in platelet count was 24.0 (8.2).

Figure 1: Plot of the LS Means (95% CI) of the Percentage Change in DLco (% predicted) from Baseline to Week 104 in Adult Patients with ASMD (Trial 1)



The vertical bars represent the 95% CIs for the LS means. The LS means and 95% CIs are based on a mixed model for repeated measures approach, using data up to Week 104. Patients in placebo/XENPOZYME group received placebo by Week 52 and switched to XENPOZYME thereafter.

Figure 2: Plot of the LS means (95% CI) of the Percentage Change in Spleen Volume (MN) from Baseline to Week 104 in Patients with ASMD (Trial 1)



The vertical bars represent the 95% CIs for the LS means. The LS means and 95% CIs are based on a mixed model for repeated measures approach, using data up to Week 104. Patients in placebo/XENPOZYME group received placebo by Week 52 and switched to XENPOZYME thereafter.

14.3 Clinical Trial in Pediatric Patients with ASMD

Trial 2 was a multi-center, open-label, repeated-dose trial of XENPOZYME administered intravenously once every 2 weeks (via infusion) for 64 weeks in pediatric patients aged <18 years with a clinical diagnosis consistent with ASMD type B and A/B. Exploratory efficacy endpoints related to organomegaly, pulmonary and liver functions, and linear growth were evaluated at Week 52. XENPOZYME was dosed as follows: 0.03 mg/kg (Day 1, Week 0), 0.1 mg/kg (Weeks 2), 0.3 mg/kg (Weeks 4 and 6), 0.6 mg/kg (Week 8 and 10), 1 mg/kg (Week 12), 2 mg/kg (Week 14) and then a maintenance dose of 3 mg/kg (Week 16 onwards).

In Trial 2, 8 patients (7 patients from 2 to <12 years old, and 1 patient <2 years old) received an initial dose of 0.03 mg/kg XENPOZYME and all but one completed the dose escalation up to the maintenance dose of 3 mg/kg within 22 weeks. All patients were White and of non-Hispanic/Latino ethnicity.

Patients enrolled in the trial had a spleen volume ≥ 5 MN measured by MRI. Age of patients treated with XENPOZYME ranged from 1 to 10 years old, with both sexes equally represented.

Treatment with XENPOZYME resulted in improvements in mean percent change in % predicted DLco, spleen and liver volumes, platelet counts, and linear growth progression (as measured by height Z-scores) at Week 52 as compared to baseline (see Table 10).

Table 10: Efficacy Results in XENPOZYME-Treated Pediatric Patients with ASMD (Trial 2)

	Baseline Values	Week 52 Values
Mean % predicted DLco (SD)	(n=3) 48.5 (8.1)	(n=3) 70.9 (13.7)
LS mean Percent change in % predicted DLco* (SE)		45.9 (22.7)

95% CI		-12.5, 104.3
Mean spleen volume (MN) (SD) LS Mean Percent change in Spleen Volume (in MN) (SE)	(n=8) 18.3 (5.6)	(n=8) 9.50 (2.4) -46.7 (3.6)
95% CI		-55.5, -37.9
Mean liver volume (MN) (SD) LS Mean Percent change in Liver Volume (in MN) (SE)	(n=8) 2.5 (0.5)	(n=8) 1.6 (0.3) -38.1 (2.9)
95% CI		-44.1, -32.0
Mean platelet count (10 ⁹ /L) (SD) LS Mean Percent change in Platelet Count (SE)	(n=8) 136.7 (33.2)	(n=7) 184.5 (54.2) 37.6 (13.7)
95% CI		8.5, 66.7
Mean height Z-scores (SD) LS Mean Change in height Z-scores (SE)	(n=8) -1.9 (0.8)	(n=7) -1.5 (1.0) 0.5 (0.1)
95% CI		0.2, 0.8

14.4 Extension Trial in ASMD Pediatric Patients

The 8 pediatric patients 2 to <12 years of age from Trial 2 continued treatment in an open label long term trial (Trial 3) and were treated with XENPOZYME for 2.5 to 3.2 years.

Efficacy analyses showed continued improvements in the 3 patients evaluated for % predicted DLco, 6 patients evaluated for platelet counts, and all 8 patients evaluated for spleen and liver volumes, compared to baseline, during the additional 6 months extension. In addition, the height Z-score increased by 1.3 from baseline when evaluated through 24 months of XENPOZYME treatment. Bone age, as assessed by hand x-ray, was delayed by a mean of 26.4 months at baseline in the 7 pediatric patients enrolled in Trial 2 with a bone age measured at Month 24 in Trial 3. The bone age improved to within a mean of 12 months of the chronological age when assessed at Month 24 in these 7 patients.

16 HOW SUPPLIED/STORAGE AND HANDLING

How Supplied

XENPOZYME (olipudase alfa-rpcp) for injection is supplied as a sterile white to off-white lyophilized powder for reconstitution in a single-dose vial. XENPOZYME does not contain any preservatives.

XENPOZYME is available in a carton containing one (1) 20 mg single-dose vial (NDC 58468-0050-1).

Storage and Handling

Store refrigerated at 2°C to 8°C (36°F to 46°F). Do not freeze.

For storage of reconstituted and diluted solution [*see Dosage and Administration (2.6)*].

17 PATIENT COUNSELING INFORMATION

Hypersensitivity Reactions (Including Anaphylaxis) and Infusion-Associated Reactions (IARs)

Advise the patient and caregiver that reactions related to the infusion may occur during and after XENPOZYME treatment, including anaphylactic reactions, other serious or severe hypersensitivity reactions, and IARs. Inform the patient and caregiver of the signs and symptoms of hypersensitivity reactions and IARs and to seek medical care should signs and symptoms occur [*see Warnings and Precautions (5.1, 5.2)*].

Embryo-Fetal Toxicity

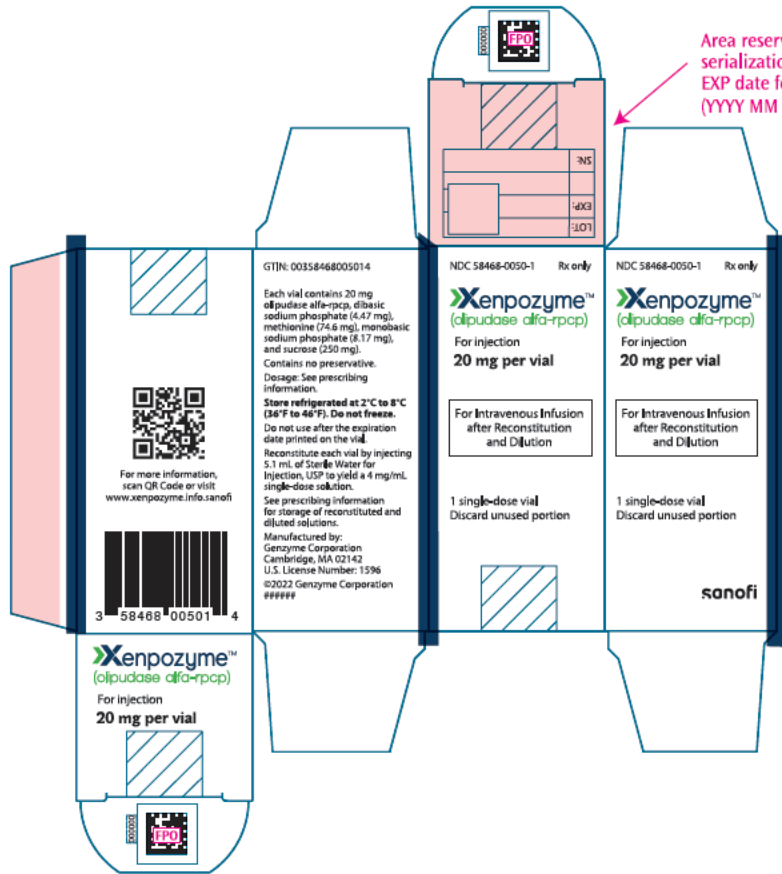
XENPOZYME may cause embryo-fetal harm. Advise the pregnant female and females of reproductive potential of the potential risk to the fetus. Advise a female patient and caregiver to inform their healthcare provider of a known or suspected pregnancy [*see Use in Specific Populations (8.1)*].

Advise a female of reproductive potential to use effective contraception during treatment and for 14 days after the last dose if XENPOZYME is discontinued [*see Use in Specific Populations (8.1, 8.3)*].

Manufactured by:
Genzyme Corporation
450 Water Street
Cambridge, MA 02141
U.S. License Number: 1596

©2022

FOR FDA SUBMISSION ONLY



Area reserved for serialization data/LOT/EXP.
EXP date format: YYYY MM
(YYYY MM is in numeric format)

GTIN: 00358468005014

Each vial contains 20 mg alipudase alfa-rpcp, dibasic sodium phosphate (4.47 mg), methionine (74.6 mg), monobasic sodium phosphate (6.17 mg), and sucrose (250 mg). Contains no preservative.

Dosage: See prescribing information.

Store refrigerated at 2°C to 8°C (36°F to 46°F). Do not freeze. Do not use after the expiration date printed on the vial.

Reconstitute each vial by injecting 5.1 mL of Sterile Water for Injection, USP to yield a 4 mg/mL single-dose solution. See prescribing information for storage of reconstituted and diluted solutions.

Manufactured by:
Genzyme Corporation
Cambridge, MA 02142
U.S. License Number: 1596
©2022 Genzyme Corporation
#####

NDC 58468-0050-1 Rx only

Xenpozyme™
(alipudase alfa-rpcp)

For injection
20 mg per vial

For Intravenous Infusion
after Reconstitution
and Dilution

1 single-dose vial
Discard unused portion

NDC 58468-0050-1 Rx only

Xenpozyme™
(alipudase alfa-rpcp)

For injection
20 mg per vial

For Intravenous Infusion
after Reconstitution
and Dilution

1 single-dose vial
Discard unused portion

sanofi



For more information,
scan QR code or visit:
www.xenpozyme.info.sanofi



3 58468 00501 4

Xenpozyme™
(alipudase alfa-rpcp)

For injection
20 mg per vial

FOR FDA SUBMISSION ONLY

NDC 5846F0050-1 Rx only

Xenpozyme™
(alipudase alfa-rpap)


For Injection
20 mg per vial

For Intravenous Infusion after
Reconstitution and Dilution

Single-dose vial. Discard unused portion.
Dosage: See prescribing information.

Lot: [] Exp: []

Keep refrigerated at 2°C to 8°C (36°F to 46°F). DO NOT FREEZE.
Mfd. by Genzyme
Corporation
U.S. Pat. No. 5,986



EXP date format: YYYY MM
(YYYY MM is in numeric format)

This is a representation of an electronic record that was signed electronically. Following this are manifestations of any and all electronic signatures for this electronic record.

/s/

CHRISTINE P NGUYEN
08/31/2022 09:43:11 AM