

MICRO LABS LTD
COMMON TECHNICAL DOCUMENT MODULE 1, ADMINISTRATIVE INFORMATION
DOLUTEGRAVIR TABLETS 50 MG

HIGHLIGHTS OF PRESCRIBING INFORMATION

These highlights do not include all the information needed to use DOLUTEGRAVIR TABLETS safely and effectively. See full prescribing information for DOLUTEGRAVIR TABLETS.

DOLUTEGRAVIR tablets, for oral use
Initial U.S. Approval: 2013

-----**RECENT MAJOR CHANGES**-----

Dosage and Administration, Pregnancy Testing before 09/2018 initiation of Dolutegravir tablets (2.1)

Warnings and Precautions, Embryo-Fetal Toxicity 09/2018 (5.3)

-----**INDICATIONS AND USAGE**-----

Dolutegravir tablet is a human immunodeficiency virus type 1 (HIV-1) integrase strand transfer inhibitor (INSTI) indicated in combination with:

- other antiretroviral agents for the treatment of HIV-1 infection in adults and in pediatric patients weighing at least 30 kg. (1)
- rilpivirine as a complete regimen for the treatment of HIV-1 infection in adults to replace the current antiretroviral regimen in those who are virologically suppressed (HIV-1 RNA less than 50 copies per mL) on a stable antiretroviral regimen for at least 6 months with no history of treatment failure or known substitutions associated with resistance to either antiretroviral agent. (1)

-----**DOSAGE AND ADMINISTRATION**-----

- Pregnancy Testing: Perform pregnancy testing before initiation of dolutegravir tablet in adolescents and adults of childbearing potential. (2.1, 5.3)
- May be taken without regard to food. (2.2, 2.3)

Adult Population	Recommended Dose
Treatment-naïve or treatment-experienced INSTI-naïve or virologically suppressed (HIV-1 RNA <50 copies per mL) adults switching to dolutegravir plus rilpivirine ^a (2.2)	50 mg once daily
Treatment-naïve or treatment-experienced INSTI-naïve when coadministered with certain UGT1A or CYP3A inducers (2.2, 7.3)	50 mg twice daily
INSTI-experienced with certain INSTI-associated resistance substitutions or clinically suspected INSTI resistance ^b (12.4)	50 mg twice daily

^a Rilpivirine dose is 25 mg once daily for those switching to dolutegravir plus rilpivirine.

^b Alternative combinations that do not include metabolic inducers should be considered where possible.

Pediatric Patients: (Treatment-naïve or treatment-experienced INSTI-naïve patients weighing at least 30 kg). (2.3)

- If at least 40 kg: The recommended dose is dolutegravir 50 mg once daily.
- Patients 30 kg to less than 40 kg: The recommended dose is dolutegravir 35 mg once daily.
- If certain UGT1A or CYP3A inducers are coadministered, then adjust the weight-based dose of dolutegravir to twice daily. (2.3, 7.3)

-----**DOSAGE FORMS AND STRENGTHS**-----

Tablets: 50 mg (3)

-----**CONTRAINDICATIONS**-----

- Previous hypersensitivity reaction to dolutegravir. (4)
- Coadministration with dofetilide. (4)

-----**WARNINGS AND PRECAUTIONS**-----

- Hypersensitivity reactions characterized by rash, constitutional findings, and sometimes organ dysfunction, including liver injury, have been reported. Discontinue dolutegravir and other suspect agents immediately if signs or symptoms of hypersensitivity reactions develop, as a delay in stopping treatment may result in a life-threatening reaction. (5.1)
- Hepatotoxicity has been reported in patients receiving dolutegravir-containing regimens. Patients with underlying hepatitis B or C may be at increased risk for worsening or development of transaminase elevations. Monitoring for hepatotoxicity is recommended. (5.2)
- Embryo-fetal toxicity may occur when used at the time of conception and in early pregnancy. Avoid use of dolutegravir at the time of conception through the first trimester of pregnancy due to the risk of neural tube defects. Advise adolescents and adults of childbearing potential to use effective contraception. (2.1, 5.3, 8.1, 8.3)
- Immune reconstitution syndrome has been reported in patients treated with combination antiretroviral therapy. (5.5)

-----**ADVERSE REACTIONS**-----

The most common adverse reactions of moderate to severe intensity and incidence at least 2% (in those receiving dolutegravir in any one adult trial) are insomnia, fatigue, and headache. (6.1)

To report SUSPECTED ADVERSE REACTIONS, contact Micro Labs USA, Inc. at 1-855-839-8195 or FDA at 1-800-FDA-1088 or www.fda.gov/medwatch.

-----**DRUG INTERACTIONS**-----

- Refer to the full prescribing information for important drug interactions with dolutegravir. (4, 7)
- Drugs that are metabolic inducers may decrease the plasma concentrations of dolutegravir. (7.2, 7.3)
- Dolutegravir should be taken 2 hours before or 6 hours after taking cation-containing antacids or laxatives, sucralfate, oral supplements containing iron or calcium, or buffered medications. Alternatively, dolutegravir and supplements containing calcium or iron can be taken together with food. (7.3)

-----**USE IN SPECIFIC POPULATIONS**-----

- Pregnancy: Avoid use of dolutegravir at the time of conception through the first trimester due to the risk of neural tube defects. (2.1, 5.3, 8.1)
- Lactation: Breastfeeding is not recommended due to the potential for HIV-1 transmission. (8.2)
- Females and males of reproductive potential: Pregnancy testing and contraception are recommended in adolescents and adults of childbearing potential. (8.3)

See 17 for PATIENT COUNSELING INFORMATION and FDA-approved patient labeling.

Revised: 08/2019

MICRO LABS LTD

**COMMON TECHNICAL DOCUMENT MODULE 1, ADMINISTRATIVE INFORMATION
DOLUTEGRAVIR TABLETS 50 MG**

FULL PRESCRIBING INFORMATION: CONTENTS*

1	INDICATIONS AND USAGE
2	DOSAGE AND ADMINISTRATION
	2.1 Pregnancy Testing before Initiation of Dolutegravir
	2.2 Adults
	2.3 Pediatric Patients
3	DOSAGE FORMS AND STRENGTHS
4	CONTRAINDICATIONS
5	WARNINGS AND PRECAUTIONS
	5.1 Hypersensitivity Reactions
	5.2 Hepatotoxicity
	5.3 Embryo-Fetal Toxicity
	5.4 Risk of Adverse Reactions or Loss of Virologic Response Due to Drug Interactions
	5.5 Immune Reconstitution Syndrome
6	ADVERSE REACTIONS
	6.1 Clinical Trials Experience
	6.2 Postmarketing Experience
7	DRUG INTERACTIONS
	7.1 Effect of Dolutegravir on the Pharmacokinetics of Other Agents
	7.2 Effect of Other Agents on the Pharmacokinetics of Dolutegravir
	7.3 Established and Other Potentially Significant Drug Interactions
	7.4 Drugs without Clinically Significant Interactions

8	with Dolutegravir USE IN SPECIFIC POPULATIONS
	8.1 Pregnancy
	8.2 Lactation
	8.3 Females and Males of Reproductive Potential
	8.4 Pediatric Use
	8.5 Geriatric Use
	8.6 Hepatic Impairment
	8.7 Renal Impairment
10	OVERDOSAGE
11	DESCRIPTION
12	CLINICAL PHARMACOLOGY
	12.1 Mechanism of Action
	12.2 Pharmacodynamics
	12.3 Pharmacokinetics
	12.4 Microbiology
13	NONCLINICAL TOXICOLOGY
	13.1 Carcinogenesis, Mutagenesis, Impairment of Fertility
14	CLINICAL STUDIES
	14.1 Description of Clinical Studies
	14.2 Adult Subjects
	14.3 Pediatric Subjects
16	HOW SUPPLIED/STORAGE AND HANDLING
17	PATIENT COUNSELING INFORMATION

*Sections or subsections omitted from the full prescribing information are not listed.

MICRO LABS LTD
COMMON TECHNICAL DOCUMENT MODULE 1, ADMINISTRATIVE
INFORMATION
DOLUTEGRAVIR TABLETS 50 MG
FULL PRESCRIBING INFORMATION

1 INDICATIONS AND USAGE

Dolutegravir tablet is indicated in combination with:

- other antiretroviral agents for the treatment of human immunodeficiency virus type 1 (HIV-1) infection in adults and in pediatric patients weighing at least 30 kg [see *Microbiology (12.4)*].
- rilpivirine as a complete regimen for the treatment of HIV-1 infection in adults to replace the current antiretroviral regimen in those who are virologically suppressed (HIV-1 RNA less than 50 copies per mL) on a stable antiretroviral regimen for at least 6 months with no history of treatment failure or known substitutions associated with resistance to either antiretroviral agent.

2 DOSAGE AND ADMINISTRATION

2.1 Pregnancy Testing before Initiation of Dolutegravir

Perform pregnancy testing before initiation of dolutegravir in adolescents and adults of childbearing potential [see *Warnings and Precautions (5.3)*, *Use in Specific Populations (8.1, 8.3)*].

2.2 Adults

Dolutegravir tablets may be taken with or without food.

Table 1. Dosing Recommendations for Dolutegravir in Adult Patients

Population	Recommended Dose
Treatment-naïve or treatment-experienced INSTI-naïve or virologically suppressed (HIV-1 RNA <50 copies per mL) adults switching to dolutegravir plus rilpivirine ^a	50 mg once daily
Treatment-naïve or treatment-experienced INSTI-naïve when coadministered with certain UGT1A or CYP3A inducers [see <i>Drug Interactions (7.3)</i>]	50 mg twice daily
INSTI-experienced with certain INSTI-associated resistance substitutions or clinically suspected INSTI resistance ^b [see <i>Microbiology (12.4)</i>]	50 mg twice daily

^a Rilpivirine dose is 25 mg once daily for those switching to dolutegravir plus rilpivirine.

^b Alternative combinations that do not include metabolic inducers should be considered where possible [see *Drug Interactions (7)*].

2.3 Pediatric Patients

Dolutegravir tablets may be taken with or without food.

MICRO LABS LTD
COMMON TECHNICAL DOCUMENT MODULE 1, ADMINISTRATIVE
INFORMATION
DOLUTEGRAVIR TABLETS 50 MG

Treatment-Naïve or Treatment-Experienced INSTI-Naïve

The recommended dose of dolutegravir in pediatric patients weighing at least 30 kg is provided in Table 2.

Table 2. Dosing Recommendations for Dolutegravir in Pediatric Patients Weighing at Least 30 kg

Body Weight (kg)	Daily Dose^a (Number of Tablets per Dose when Different Strength(s) are Required)
30 to less than 40	35 mg once daily (One 25-mg tablet and one 10-mg tablet)
40 or greater	50 mg once daily

^a If certain UGT1A or CYP3A inducers are coadministered, then increase the weight-based dose of dolutegravir to twice daily [see *Drug Interactions (7.3) for relevant inducers*].

Safety and efficacy of dolutegravir have not been established in pediatric patients who are INSTI-experienced with documented or clinically suspected resistance to other INSTIs (raltegravir, elvitegravir).

3 DOSAGE FORMS AND STRENGTHS

Tablet:

50 mg: Each tablet contains 50 mg of dolutegravir (as dolutegravir sodium). Tablets are green round biconvex tablets debossed with “C” on one side and “90” on the other side.

4 CONTRAINDICATIONS

Dolutegravir tablet is contraindicated in patients:

- with previous hypersensitivity reaction to dolutegravir [see *Warnings and Precautions (5.1)*].
- receiving dofetilide due to the potential for increased dofetilide plasma concentrations and the risk for serious and/or life-threatening events [see *Drug Interactions (7)*].

5 WARNINGS AND PRECAUTIONS

5.1 Hypersensitivity Reactions

Hypersensitivity reactions have been reported and were characterized by rash, constitutional findings, and sometimes organ dysfunction, including liver injury. The events were reported in less than 1% of subjects receiving dolutegravir in Phase 3 clinical trials. Discontinue dolutegravir and other suspect agents immediately if signs or symptoms of hypersensitivity reactions develop (including, but not limited to, severe rash or rash accompanied by fever, general malaise, fatigue,

MICRO LABS LTD
COMMON TECHNICAL DOCUMENT MODULE 1, ADMINISTRATIVE
INFORMATION

DOLUTEGRAVIR TABLETS 50 MG

muscle or joint aches, blisters or peeling of the skin, oral blisters or lesions, conjunctivitis, facial edema, hepatitis, eosinophilia, angioedema, difficulty breathing). Clinical status, including liver aminotransferases, should be monitored and appropriate therapy initiated. Delay in stopping treatment with dolutegravir or other suspect agents after the onset of hypersensitivity may result in a life-threatening reaction. Dolutegravir is contraindicated in patients who have experienced a previous hypersensitivity reaction to dolutegravir.

5.2 Hepatotoxicity

Hepatic adverse events have been reported in patients receiving a dolutegravir-containing regimen. Patients with underlying hepatitis B or C may be at increased risk for worsening or development of transaminase elevations with use of dolutegravir [*see Adverse Reactions (6.1)*]. In some cases, the elevations in transaminases were consistent with immune reconstitution syndrome or hepatitis B reactivation particularly in the setting where anti-hepatitis therapy was withdrawn. Cases of hepatic toxicity, including elevated serum liver biochemistries, hepatitis, and acute liver failure have been reported in patients receiving a dolutegravir-containing regimen without pre-existing hepatic disease or other identifiable risk factors. Drug-induced liver injury leading to liver transplant has been reported with TRIUMEQ (abacavir, dolutegravir, and lamivudine). Monitoring for hepatotoxicity is recommended.

5.3 Embryo-Fetal Toxicity

Preliminary data from an observational study showed that dolutegravir was associated with increased risk of neural tube defects when administered at the time of conception and in early pregnancy. As there is limited understanding of reported types of neural tube defects associated with dolutegravir use and because the date of conception may not be determined with precision, avoid use of dolutegravir at the time of conception through the first trimester of pregnancy [*see Use in Specific Populations (8.1)*].

If there are plans to become pregnant or if pregnancy is confirmed within the first trimester while on dolutegravir, if possible, switch to an alternative regimen.

Perform pregnancy testing before initiation of dolutegravir in adolescents and adults of childbearing potential to exclude use of dolutegravir during the first trimester of pregnancy [*see Dosage and Administration (2.1)*].

Advise adolescents and adults of childbearing potential to consistently use effective contraception [*see Use in Specific Populations (8.1, 8.3)*].

5.4 Risk of Adverse Reactions or Loss of Virologic Response Due to Drug Interactions

The concomitant use of dolutegravir and other drugs may result in known or potentially significant drug interactions, some of which may lead to [*see Contraindications (4), Drug Interactions (7.3)*]:

- Loss of therapeutic effect of dolutegravir and possible development of resistance.

MICRO LABS LTD
COMMON TECHNICAL DOCUMENT MODULE 1, ADMINISTRATIVE
INFORMATION
DOLUTEGRAVIR TABLETS 50 MG

- Possible clinically significant adverse reactions from greater exposures of concomitant drugs.

For concomitant drugs for which the interaction can be mitigated, please see Table 6 for steps to prevent or manage these possible and known significant drug interactions, including dosing recommendations. Consider the potential for drug interactions prior to and during therapy with dolutegravir; review concomitant medications during therapy with dolutegravir; and monitor for the adverse reactions associated with the concomitant drugs.

5.5 Immune Reconstitution Syndrome

Immune reconstitution syndrome has been reported in patients treated with combination antiretroviral therapy, including dolutegravir. During the initial phase of combination antiretroviral treatment, patients whose immune systems respond may develop an inflammatory response to indolent or residual opportunistic infections (such as *Mycobacterium avium* infection, cytomegalovirus, *Pneumocystis jirovecii* pneumonia [PCP], or tuberculosis), which may necessitate further evaluation and treatment.

Autoimmune disorders (such as Graves' disease, polymyositis, and Guillain-Barré syndrome) have also been reported to occur in the setting of immune reconstitution; however, the time to onset is more variable and can occur many months after initiation of treatment.

6 ADVERSE REACTIONS

The following serious adverse drug reactions are discussed in other sections of the labeling:

- Hypersensitivity reactions [see *Warnings and Precautions (5.1)*].
- Hepatotoxicity [see *Warnings and Precautions (5.3)*].
- Immune Reconstitution Syndrome [see *Warnings and Precautions (5.5)*].

6.1 Clinical Trials Experience

Because clinical trials are conducted under widely varying conditions, adverse reaction rates observed in the clinical trials of a drug cannot be directly compared with rates in the clinical trials of another drug and may not reflect the rates observed in practice.

Clinical Trials Experience in Adult Subjects

Treatment-Naïve Subjects: The safety assessment of dolutegravir in HIV-1-infected treatment-naïve subjects is based on the analyses of data from 2 international, multicenter, double-blind trials, SPRING-2 (ING113086) and SINGLE (ING114467) and data from the international, multicenter, open-label FLAMINGO (ING114915) trial.

In SPRING-2, 822 subjects were randomized and received at least 1 dose of either dolutegravir 50 mg once daily or raltegravir 400 mg twice daily, both in combination with fixed-dose dual nucleoside reverse transcriptase inhibitor (NRTI) treatment (either abacavir sulfate and

MICRO LABS LTD
COMMON TECHNICAL DOCUMENT MODULE 1, ADMINISTRATIVE
INFORMATION

DOLUTEGRAVIR TABLETS 50 MG

lamivudine [EPZICOM] or emtricitabine/tenofovir [TRUVADA]). There were 808 subjects included in the efficacy and safety analyses. Through 96 weeks, the rate of adverse events leading to discontinuation was 2% in both treatment arms.

In SINGLE, 833 subjects were randomized and received at least 1 dose of either dolutegravir 50 mg with fixed-dose abacavir sulfate and lamivudine (EPZICOM) once daily or fixed-dose efavirenz/emtricitabine/tenofovir (ATRIPLA) once daily (study treatment was blinded through Week 96 and open-label from Week 96 through Week 144). Through 144 weeks, the rates of adverse events leading to discontinuation were 4% in subjects receiving dolutegravir 50 mg once daily + EPZICOM and 14% in subjects receiving ATRIPLA once daily.

Treatment-emergent adverse reactions (ARs) of moderate to severe intensity observed in at least 2% of subjects in either treatment arm in SPRING-2 and SINGLE trials are provided in Table 3. Side-by-side tabulation is to simplify presentation; direct comparisons across trials should not be made due to differing trial designs.

Table 3. Treatment-Emergent Adverse Reactions of at Least Moderate Intensity (Grades 2 to 4) and at Least 2% Frequency in Treatment-Naïve Subjects in SPRING-2 (Week 96 Analysis) and SINGLE Trials (Week 144 Analysis)

System Organ Class/ Preferred Term	SPRING-2		SINGLE	
	Dolutegravir 50 mg Once Daily + 2 NRTIs (n = 403)	Raltegravir 400 mg Twice Daily + 2 NRTIs (n = 405)	Dolutegravir 50 mg + EPZICOM Once Daily (n = 414)	ATRIPLA Once Daily (n = 419)
Psychiatric				
Insomnia	<1%	<1%	3%	3%
Depression	<1%	<1%	1%	2%
Abnormal dreams	<1%	<1%	<1%	2%
Nervous System				
Dizziness	<1%	<1%	<1%	5%
Headache	<1%	<1%	2%	2%
Gastrointestinal				
Nausea	1%	1%	<1%	3%
Diarrhea	<1%	<1%	<1%	2%
Skin and Subcutaneous Tissue				
Rash ^a	0	<1%	<1%	6%
General Disorders				
Fatigue	<1%	<1%	2%	2%
Ear and Labyrinth				
Vertigo	0	<1%	0	2%

MICRO LABS LTD
COMMON TECHNICAL DOCUMENT MODULE 1, ADMINISTRATIVE
INFORMATION
DOLUTEGRAVIR TABLETS 50 MG

^a Includes pooled terms: rash, rash generalized, rash macular, rash maculo-papular, rash pruritic, and drug eruption.

In addition, Grade 1 insomnia was reported by 1% and less than 1% of subjects receiving dolutegravir and raltegravir, respectively, in SPRING-2; whereas in SINGLE the rates were 7% and 4% for dolutegravir and ATRIPLA, respectively. These events were not treatment limiting.

In a multicenter, open-label trial (FLAMINGO), 243 subjects received dolutegravir 50 mg once daily versus 242 subjects who received darunavir 800 mg/ritonavir 100 mg once daily, both in combination with investigator-selected NRTI background regimen (either EPZICOM or TRUVADA). There were 484 subjects included in the efficacy and safety analyses. Through 96 weeks, the rates of adverse events leading to discontinuation were 3% in subjects receiving dolutegravir and 6% in subjects receiving darunavir/ritonavir. The ARs observed in FLAMINGO were generally consistent with those seen in SPRING-2 and SINGLE.

Treatment-Experienced, Integrase Strand Transfer Inhibitor-Naïve Subjects: In an international, multicenter, double-blind trial (ING111762, SAILING), 719 HIV-1-infected, antiretroviral treatment-experienced adults were randomized and received either dolutegravir 50 mg once daily or raltegravir 400 mg twice daily with investigator-selected background regimen consisting of up to 2 agents, including at least one fully active agent. At 48 weeks, the rates of adverse events leading to discontinuation were 3% in subjects receiving dolutegravir 50 mg once daily + background regimen and 4% in subjects receiving raltegravir 400 mg twice daily + background regimen.

The only treatment-emergent AR of moderate to severe intensity with at least 2% frequency in either treatment group was diarrhea, 2% (6 of 354) in subjects receiving dolutegravir 50 mg once daily + background regimen and 1% (5 of 361) in subjects receiving raltegravir 400 mg twice daily + background regimen.

Treatment-Experienced, Integrase Strand Transfer Inhibitor-Experienced Subjects: In a multicenter, open-label, single-arm trial (ING112574, VIKING-3), 183 HIV-1-infected, antiretroviral treatment-experienced adults with virological failure and current or historical evidence of raltegravir and/or elvitegravir resistance received dolutegravir 50 mg twice daily with the current failing background regimen for 7 days and with optimized background therapy from Day 8. The rate of adverse events leading to discontinuation was 4% of subjects at Week 48.

Treatment-emergent ARs in VIKING-3 were generally similar compared with observations with the 50-mg once-daily dose in adult Phase 3 trials.

Virologically Suppressed Subjects: The ARs observed for dolutegravir plus rilpivirine in the Week 48 analysis of pooled data from 2 identical, international, multicenter, open-label trials (SWORD-1 and SWORD-2) of 513 HIV-1-infected, virologically suppressed subjects switching from their current antiretroviral regimen to dolutegravir plus rilpivirine, were consistent with the

MICRO LABS LTD
COMMON TECHNICAL DOCUMENT MODULE 1, ADMINISTRATIVE
INFORMATION

DOLUTEGRAVIR TABLETS 50 MG

AR profiles and severities for the individual components when administered with other antiretroviral agents. There were no ARs (Grades 2 to 4) with an incidence of at least 2% in either treatment arm. The rates of adverse events leading to discontinuation were 4% in subjects receiving dolutegravir plus rilpivirine once daily and less than 1% in subjects who remained on their current antiretroviral regimen.

Less Common Adverse Reactions Observed in Treatment-Naïve and Treatment-Experienced Trials: The following ARs occurred in less than 2% of treatment-naïve or treatment-experienced subjects receiving dolutegravir in a combination regimen in any one trial. These events have been included because of their seriousness and assessment of potential causal relationship.

Gastrointestinal Disorders: Abdominal pain, abdominal discomfort, flatulence, upper abdominal pain, vomiting.

Hepatobiliary Disorders: Hepatitis.

Musculoskeletal Disorders: Myositis.

Psychiatric Disorders: Suicidal ideation, attempt, behavior, or completion. These events were observed primarily in subjects with a pre-existing history of depression or other psychiatric illness.

Renal and Urinary Disorders: Renal impairment.

Skin and Subcutaneous Tissue Disorders: Pruritus.

Laboratory Abnormalities:

Treatment-Naïve Subjects: Selected laboratory abnormalities (Grades 2 to 4) with a worsening grade from baseline and representing the worst-grade toxicity in at least 2% of subjects are presented in Table 4. The mean change from baseline observed for selected lipid values is presented in Table 5. Side-by-side tabulation is to simplify presentation; direct comparisons across trials should not be made due to differing trial designs.

Table 4. Selected Laboratory Abnormalities (Grades 2 to 4) in Treatment-Naïve Subjects in SPRING-2 (Week 96 Analysis) and SINGLE Trials (Week 144 Analysis)

Laboratory Preferred Term	Parameter	SPRING-2		SINGLE	
		Dolutegravir 50 mg Once Daily + 2 NRTIs (n = 403)	Raltegravir 400 mg Twice Daily + 2 NRTIs (n = 405)	Dolutegravir 50 mg + EPZICOM Once Daily (n = 414)	ATRIPLA Once Daily (n = 419)
ALT					
Grade 2 (>2.5 to 5 x ULN)		4%	4%	3%	5%
Grade 3 to 4 (>5 x ULN)		2%	2%	1%	<1%
AST					
Grade 2 (>2.5 to 5 x ULN)		5%	3%	3%	4%
Grade 3 to 4 (>5 x ULN)		3%	2%	1%	3%
Total Bilirubin		3%	2%	<1%	<1%

MICRO LABS LTD
COMMON TECHNICAL DOCUMENT MODULE 1, ADMINISTRATIVE
INFORMATION
DOLUTEGRAVIR TABLETS 50 MG

Grade 2 (1.6 to 2.5 x ULN)	<1%	<1%	<1%	<1%
Grade 3 to 4 (>2.5 x ULN)				
Creatine kinase				
Grade 2 (6 to 9.9 x ULN)	2%	5%	5%	3%
Grade 3 to 4 (≥ 10 x ULN)	7%	4%	7%	8%
Hyperglycemia				
Grade 2 (126 to 250 mg/dL)	6%	6%	9%	6%
Grade 3 (>250 mg/dL)	<1%	2%	2%	<1%
Lipase				
Grade 2 (>1.5 to 3 x ULN)	7%	7%	11%	11%
Grade 3 to 4 (>3 x ULN)	2%	5%	5%	4%
Total neutrophils				
Grade 2 (0.75 to 0.99 x 10 ⁹)	4%	3%	4%	5%
Grade 3 to 4 (<0.75 x 10 ⁹)	2%	2%	3%	3%

ULN = Upper limit of normal.

Table 5. Mean Change from Baseline in Fasted Lipid Values in Treatment-Naïve Subjects in SPRING-2 (Week 96 Analysis^a) and SINGLE Trials (Week 144 Analysis^a)

Laboratory Preferred Term	Parameter	SPRING-2		SINGLE	
		Dolutegravir 50 mg Once Daily + 2 NRTIs (n = 403)	Raltegravir 400 mg Twice Daily + 2 NRTIs (n = 405)	Dolutegravir 50 mg + EPZICOM Once Daily (n = 414)	ATRIPLA Once Daily (n = 419)
Cholesterol (mg/dL)		8.1	10.1	24	26.7
HDL cholesterol (mg/dL)		2	2.3	5.4	7.2
LDL cholesterol (mg/dL)		5.1	6.1	16	14.6
Triglycerides (mg/dL)		6.7	6.6	13.6	31.9

^a Subjects on lipid-lowering agents at baseline were excluded from these analyses (19 subjects in each arm in SPRING-2, and in SINGLE: dolutegravir + EPZICOM n = 30 and ATRIPLA n = 27). Ninety-four subjects initiated a lipid-lowering agent post-baseline; their last fasted on-treatment values (prior to starting the agent) were used regardless if they discontinued the agent (SPRING-2: dolutegravir n = 9, raltegravir n = 13; SINGLE: dolutegravir + EPZICOM n = 36 and ATRIPLA: n = 36).

Laboratory abnormalities observed in the FLAMINGO trial were generally consistent with observations in SPRING-2 and SINGLE.

Treatment-Experienced, Integrase Strand Transfer Inhibitor-Naïve Subjects: Laboratory abnormalities observed in SAILING were generally similar compared with observations seen in the treatment-naïve (SPRING-2 and SINGLE) trials.

Treatment-Experienced, Integrase Strand Transfer Inhibitor-Experienced Subjects: The most common treatment-emergent laboratory abnormalities (greater than 5% for Grades 2 to 4 combined) observed in VIKING-3 at Week 48 were elevated ALT (9%), AST (8%), cholesterol

MICRO LABS LTD
COMMON TECHNICAL DOCUMENT MODULE 1, ADMINISTRATIVE
INFORMATION

DOLUTEGRAVIR TABLETS 50 MG

(10%), creatine kinase (6%), hyperglycemia (14%), and lipase (10%). Two percent (4 of 183) of subjects had a Grade 3 to 4 treatment-emergent hematology laboratory abnormality, with neutropenia (2% [3 of 183]) being the most frequently reported.

Virologically Suppressed Adults: Laboratory abnormalities observed in SWORD-1 and SWORD-2 were generally similar compared with observations seen in the other Phase 3 trials.

Hepatitis B and/or Hepatitis C Virus Co-infection: In Phase 3 trials, subjects with hepatitis B and/or C virus co-infection were permitted to enroll provided that baseline liver chemistry tests did not exceed 5 times the upper limit of normal. Overall, the safety profile in subjects with hepatitis B and/or C virus co-infection was similar to that observed in subjects without hepatitis B or C co-infection, although the rates of AST and ALT abnormalities were higher in the subgroup with hepatitis B and/or C virus co-infection for all treatment groups. Grades 2 to 4 ALT abnormalities in hepatitis B and/or C co-infected compared with HIV mono- infected subjects receiving dolutegravir were observed in 18% vs. 3% with the 50-mg once-daily dose and 13% vs. 8% with the 50-mg twice-daily dose. Liver chemistry elevations consistent with immune reconstitution syndrome were observed in some subjects with hepatitis B and/or C at the start of therapy with dolutegravir, particularly in the setting where anti-hepatitis therapy was withdrawn [*see Warnings and Precautions (5.2)*].

Changes in Serum Creatinine: Dolutegravir has been shown to increase serum creatinine due to inhibition of tubular secretion of creatinine without affecting renal glomerular function [*see Clinical Pharmacology (12.2)*]. Increases in serum creatinine occurred within the first 4 weeks of treatment and remained stable through 96 weeks. In treatment-naïve subjects, a mean change from baseline of 0.15 mg per dL (range: -0.32 mg per dL to 0.65 mg per dL) was observed after 96 weeks of treatment. Creatinine increases were comparable by background NRTIs and were similar in treatment-experienced subjects.

Clinical Trials Experience in Pediatric Subjects

IMPAACT P1093 is an ongoing multicenter, open-label, non-comparative trial of approximately 160 HIV-1-infected pediatric subjects aged 4 weeks to less than 18 years, of which 46 treatment-experienced, INSTI-naïve subjects aged 6 to less than 18 years have been enrolled [*see Use in Specific Populations (8.4), Clinical Studies (14.2)*].

The adverse reaction profile was similar to that for adults. Grade 2 ARs reported by more than one subject were decreased neutrophil count (n = 3) and diarrhea (n = 2). There were no Grade 3 or 4 drug-related ARs reported. No ARs led to discontinuation.

The Grade 3 or 4 laboratory abnormalities reported in more than one subject were elevated total bilirubin (n = 3) and decreased neutrophil count (n = 2). The changes in mean serum creatinine were similar to those observed in adults.

6.2 Postmarketing Experience

MICRO LABS LTD
COMMON TECHNICAL DOCUMENT MODULE 1, ADMINISTRATIVE
INFORMATION
DOLUTEGRAVIR TABLETS 50 MG

In addition to adverse reactions reported from clinical trials, the following adverse reactions have been identified during postmarketing use. Because these reactions are reported voluntarily from a population of uncertain size, it is not always possible to reliably estimate their frequency or establish a causal relationship to drug exposure.

Hepatobiliary Disorders

Acute liver failure, hepatotoxicity.

Investigations

Weight increased.

Musculoskeletal

Arthralgia, myalgia.

Psychiatric

Anxiety

7 DRUG INTERACTIONS

7.1 Effect of Dolutegravir on the Pharmacokinetics of Other Agents

In vitro, dolutegravir inhibited the renal organic cation transporters, OCT2 (IC₅₀ = 1.93 microM) and multidrug and toxin extrusion transporter (MATE)1 (IC₅₀ = 6.34 microM). *In vivo*, dolutegravir inhibits tubular secretion of creatinine by inhibiting OCT2 and potentially MATE1. Dolutegravir may increase plasma concentrations of drugs eliminated via OCT2 or MATE1 (dofetilide and metformin, Table 6) [see *Contraindications (4)*, *Drug Interactions (7.3)*].

In vitro, dolutegravir inhibited the basolateral renal transporters, organic anion transporter (OAT) 1 (IC₅₀ = 2.12 microM) and OAT3 (IC₅₀ = 1.97 microM). However, *in vivo*, dolutegravir did not alter the plasma concentrations of tenofovir or para-amino hippurate, substrates of OAT1 and OAT3.

In vitro, dolutegravir did not inhibit (IC₅₀ greater than 50 microM) the following: cytochrome P450 (CYP)1A2, CYP2A6, CYP2B6, CYP2C8, CYP2C9, CYP2C19, CYP2D6, CYP3A, uridine diphosphate (UDP)-glucuronosyl transferase 1A1 (UGT1A1), UGT2B7, P-glycoprotein (P-gp), breast cancer resistance protein (BCRP), bile salt export pump (BSEP), organic anion transporter polypeptide (OATP)1B1, OATP1B3, OCT1, multidrug resistance protein (MRP)2, or MRP4. *In vitro*, dolutegravir did not induce CYP1A2, CYP2B6, or CYP3A4. Based on these data and the results of drug interaction trials, dolutegravir is not expected to affect the pharmacokinetics of drugs that are substrates of these enzymes or transporters.

7.2 Effect of Other Agents on the Pharmacokinetics of Dolutegravir

Dolutegravir is metabolized by UGT1A1 with some contribution from CYP3A. Dolutegravir is also a substrate of UGT1A3, UGT1A9, BCRP, and P-gp *in vitro*. Drugs that induce those

MICRO LABS LTD
COMMON TECHNICAL DOCUMENT MODULE 1, ADMINISTRATIVE
INFORMATION
DOLUTEGRAVIR TABLETS 50 MG

enzymes and transporters may decrease dolutegravir plasma concentration and reduce the therapeutic effect of dolutegravir.

Coadministration of dolutegravir and other drugs that inhibit these enzymes may increase dolutegravir plasma concentration.

Etravirine significantly reduced plasma concentrations of dolutegravir, but the effect of etravirine was mitigated by coadministration of lopinavir/ritonavir or darunavir/ritonavir, and is expected to be mitigated by atazanavir/ritonavir (Table 6) [*see Drug Interactions (7.3), Clinical Pharmacology (12.3)*].

In vitro, dolutegravir was not a substrate of OATP1B1 or OATP1B3.

7.3 Established and Other Potentially Significant Drug Interactions

Table 6 provides clinical recommendations as a result of drug interactions with dolutegravir. These recommendations are based on either drug interaction trials or predicted interactions due to the expected magnitude of interaction and potential for serious adverse events or loss of efficacy. [*See Dosage and Administration (2), Clinical Pharmacology (12.3)*].

Table 6. Established and Other Potentially Significant Drug Interactions: Alterations in Dose or Regimen May Be Recommended Based on Drug Interaction Trials or Predicted Interactions [*see Dosage and Administration (2)*]

Concomitant Drug Class: Drug Name	Effect on Concentration of Dolutegravir and/or Concomitant Drug	Clinical Comment
<i>HIV-1 Antiviral Agents</i>		
Non-nucleoside reverse transcriptase inhibitor: Etravirine^a	↓Dolutegravir	Use of dolutegravir with etravirine without coadministration of atazanavir/ritonavir, darunavir/ritonavir, or lopinavir/ritonavir is not recommended.
Non-nucleoside reverse transcriptase inhibitor: Efavirenz^a	↓Dolutegravir	Adjust dose of dolutegravir to 50 mg twice daily for treatment-naïve and treatment-experienced, INSTI-naïve adult patients. In pediatric patients, increase the weight-based dose to twice daily (Table 2). Use alternative combinations that do not

MICRO LABS LTD
COMMON TECHNICAL DOCUMENT MODULE 1, ADMINISTRATIVE
INFORMATION
DOLUTEGRAVIR TABLETS 50 MG

		include metabolic inducers where possible for INSTI-experienced patients with certain INSTI-associated resistance substitutions or clinically suspected INSTI resistance. ^b
Non-nucleoside reverse transcriptase inhibitor: Nevirapine	↓Dolutegravir	Avoid coadministration with nevirapine because there are insufficient data to make dosing recommendations.
Protease inhibitor: Fosamprenavir/ritonavir ^a Tipranavir/ritonavir ^a	↓Dolutegravir	Adjust dose of dolutegravir to 50 mg twice daily for treatment-naïve and treatment-experienced, INSTI-naïve adult patients. In pediatric patients, increase the weight-based dose to twice daily (Table 2). Use alternative combinations that do not include metabolic inducers where possible for INSTI-experienced patients with certain INSTI-associated resistance substitutions or clinically suspected INSTI resistance. ^b
Other Agents		
Dofetilide	↑Dofetilide	Coadministration is contraindicated with dolutegravir [see <i>Contraindications (4)</i>].
Carbamazepine ^a	↓Dolutegravir	Adjust dose of dolutegravir to 50 mg twice daily in treatment-naïve or treatment-experienced, INSTI-naïve adult patients. In pediatric patients, increase the weight-based dose to twice daily (Table 2). Use alternative treatment that does not include carbamazepine where possible for INSTI-experienced patients with certain INSTI-associated resistance substitutions or clinically suspected INSTI resistance. ^b
Oxcarbazepine Phenytoin Phenobarbital St. John's wort (<i>Hypericum perforatum</i>)	↓Dolutegravir	Avoid coadministration with dolutegravir because there are insufficient data to make dosing recommendations.
Medications containing polyvalent cations	↓Dolutegravir	Administer dolutegravir 2 hours before or 6 hours after taking medications

MICRO LABS LTD
COMMON TECHNICAL DOCUMENT MODULE 1, ADMINISTRATIVE
INFORMATION
DOLUTEGRAVIR TABLETS 50 MG

(e.g., Mg or Al): Cation-containing antacids ^a or laxatives Sucralfate Buffered medications		containing polyvalent cations.
Oral calcium or iron supplements, including multivitamins containing calcium or iron^a	↓Dolutegravir	Administer dolutegravir 2 hours before or 6 hours after taking supplements containing calcium or iron. Alternatively, dolutegravir and supplements containing calcium or iron can be taken together with food.
Metformin	↑Metformin	With concomitant use, limit the total daily dose of metformin to 1,000 mg either when starting metformin or dolutegravir. When stopping dolutegravir, the metformin dose may require an adjustment. Monitoring of blood glucose when initiating concomitant use and after withdrawal of dolutegravir is recommended.
Rifampin ^a	↓Dolutegravir	Adjust dose of dolutegravir to 50 mg twice daily for treatment-naïve and treatment-experienced, INSTI-naïve adult patients. In pediatric patients, increase the weight-based dose to twice daily (Table 2). Use alternatives to rifampin where possible for INSTI-experienced patients with certain INSTI-associated resistance substitutions or clinically suspected INSTI resistance. ^b

^a See *Clinical Pharmacology (12.3) Table 9 or Table 10 for magnitude of interaction.*

^b The lower dolutegravir exposures observed in INSTI-experienced patients (with certain INSTI-associated resistance substitutions or clinically suspected INSTI resistance [*see Microbiology (12.4)*]) upon coadministration with certain inducers may result in loss of therapeutic effect and development of resistance to dolutegravir or other coadministered antiretroviral agents.

7.4 Drugs without Clinically Significant Interactions with Dolutegravir

Based on drug interaction trial results, the following drugs can be coadministered with dolutegravir without a dose adjustment: atazanavir/ritonavir, darunavir/ritonavir, daclatasvir, elbasvir/grazoprevir, methadone, midazolam, omeprazole, oral contraceptives containing norgestimate and ethinyl estradiol, prednisone, rifabutin, rilpivirine, sofosbuvir/velpatasvir, and tenofovir [*see Clinical Pharmacology (12.3)*].

MICRO LABS LTD
COMMON TECHNICAL DOCUMENT MODULE 1, ADMINISTRATIVE
INFORMATION
DOLUTEGRAVIR TABLETS 50 MG

8 USE IN SPECIFIC POPULATIONS

8.1 Pregnancy

Risk Summary

Preliminary data from an observational study has identified a possible increased risk of neural tube defects when dolutegravir is administered at the time of conception compared with non-dolutegravir-containing antiretroviral regimens. As defects related to closure of the neural tube occur from conception through the first 6 weeks of gestation, embryos exposed to dolutegravir from the time of conception through the first 6 weeks of gestation are at potential risk. In addition, 2 of the 4 birth defects (encephalocele and iniencephaly), which have been observed with dolutegravir use, although often termed neural tube defects, may occur post-neural tube closure, the time period of which may be later than 6 weeks of gestation, but within the first trimester. Due to the limited understanding of the types of reported neural tube defects associated with dolutegravir use and because the date of conception may not be determined with precision, avoid use of dolutegravir at the time of conception through the first trimester of pregnancy. No neural tube defects have been reported in infants born to mothers who have started dolutegravir after the first trimester of pregnancy (*see Data*).

If there are plans to become pregnant or if pregnancy is confirmed while on dolutegravir during the first trimester, if possible, switch to an alternative regimen. Advise pregnant adolescents and adults of the potential risk to the embryo exposed to dolutegravir from the time of conception through the first trimester of pregnancy.

There are insufficient human data on the use of dolutegravir during pregnancy to definitively assess a drug-associated risk for birth defects and miscarriage. The background risk for major birth defects for the indicated population is unknown. In the U.S. general population, the estimated background rate for major birth defects and miscarriage in clinically recognized pregnancies is 2% to 4% and 15% to 20%, respectively.

In animal reproduction studies, no evidence of adverse developmental outcomes was observed with dolutegravir at systemic exposures (AUC) less than (rabbits) and approximately 27 times (rats) the exposure in humans at the maximum recommended human dose (MRHD) of dolutegravir (*see Data*).

Data

Human Data: As of May 2018, in an ongoing birth outcome surveillance study in Botswana, there have been 4 cases of neural tube defects reported out of 426 births (0.94%) to mothers who were exposed to dolutegravir-containing regimens at the time of conception. In comparison, the neural tube defect prevalence rates were 0.12% (14/11,300) in the non-dolutegravir arm and 0.09% (61/66,057) in the HIV-uninfected arm. Four cases reported with dolutegravir included one case each of encephalocele, anencephaly, myelomeningocele, and iniencephaly. No infant

MICRO LABS LTD
COMMON TECHNICAL DOCUMENT MODULE 1, ADMINISTRATIVE
INFORMATION
DOLUTEGRAVIR TABLETS 50 MG

born to a woman who started dolutegravir during pregnancy had a neural tube defect (n = 2,812).

Data analyzed to date from other sources including the APR, clinical trials, and postmarketing data are insufficient to address the risk of neural tube defects with dolutegravir.

Animal Data: Dolutegravir was administered orally at up to 1,000 mg per kg daily to pregnant rats and rabbits on gestation Days 6 to 17 and 6 to 18, respectively, and to rats on gestation Day 6 to lactation/post-partum Day 20. No adverse effects on embryo-fetal (rats and rabbits) or pre/post-natal (rats) development were observed at up to the highest dose tested. During organogenesis, systemic exposures (AUC) to dolutegravir in rabbits were less than the exposure in humans at the MRHD and in rats were approximately 27 times the exposure in humans at the MRHD. In the rat pre/post-natal development study, decreased body weight of the developing offspring was observed during lactation at a maternally toxic dose (approximately 27 times human exposure at the MRHD).

8.2 Lactation

Risk Summary

The Centers for Disease Control and Prevention recommends that HIV-1-infected mothers in the United States not breastfeed their infants to avoid risking postnatal transmission of HIV-1 infection.

It is not known whether dolutegravir is present in human breast milk, affects human milk production, or has effects on the breastfed infant. When administered to lactating rats, dolutegravir was present in milk (*see Data*).

Because of the potential for (1) HIV-1 transmission (in HIV-negative infants), and (2) developing viral resistance (in HIV-positive infants), and (3) adverse reactions in a breastfed infant similar to those seen in adults, instruct mothers not to breastfeed if they are receiving dolutegravir.

Data

Animal Data: Dolutegravir was the primary drug-related component excreted into the milk of lactating rats following a single oral dose of 50 mg per kg on lactation Day 10, with milk concentrations of up to approximately 1.3 times that of maternal plasma concentrations observed 8 hours postdose.

8.3 Females and Males of Reproductive Potential

Pregnancy Testing

Perform pregnancy testing in adolescents and adults of childbearing potential before initiation of dolutegravir.

MICRO LABS LTD
COMMON TECHNICAL DOCUMENT MODULE 1, ADMINISTRATIVE
INFORMATION
DOLUTEGRAVIR TABLETS 50 MG

Contraception

Adolescents and adults of childbearing potential should avoid use of dolutegravir at the time of conception through the first trimester of pregnancy because of the potential risk of neural tube defects [see *Use in Specific Populations (8.1)*].

Advise adolescents and adults of childbearing potential who are taking dolutegravir to consistently use effective contraception.

8.4 Pediatric Use

The safety, virologic, and immunologic responses in subjects who received dolutegravir were evaluated in 46 treatment-experienced, INSTI-naïve, HIV-1–infected subjects aged 6 to less than 18 years in an open-label, multicenter, dose-finding clinical trial, IMPAACT P1093 [see *Clinical Pharmacology (12.3)*, *Clinical Studies (14.2)*]. Frequency, type, and severity of adverse reactions among the 46 pediatric subjects were comparable to those observed in adults [see *Adverse Reactions (6.2)*]. In 17 subjects weighing at least 30 kg, pharmacokinetic parameters of dolutegravir were comparable to adults receiving 50 mg once daily [see *Clinical Pharmacology (12.3)*].

Safety and efficacy of dolutegravir have not been established in pediatric patients weighing less than 30 kg or in any pediatric patients who are INSTI-experienced.

8.5 Geriatric Use

Clinical trials of dolutegravir did not include sufficient numbers of subjects aged 65 and older to determine whether they respond differently from younger subjects. In general, caution should be exercised in the administration of dolutegravir in elderly patients reflecting the greater frequency of decreased hepatic, renal, or cardiac function, and of concomitant disease or other drug therapy [see *Clinical Pharmacology (12.3)*].

8.6 Hepatic Impairment

No clinically important pharmacokinetic differences between subjects with moderate hepatic impairment and matching healthy subjects were observed. No dosage adjustment is necessary for patients with mild to moderate hepatic impairment (Child-Pugh Score A or B). The effect of severe hepatic impairment (Child-Pugh Score C) on the pharmacokinetics of dolutegravir has not been studied. Therefore, dolutegravir is not recommended for use in patients with severe hepatic impairment [see *Clinical Pharmacology (12.3)*].

8.7 Renal Impairment

Dolutegravir plasma concentrations were decreased in subjects with severe renal impairment compared with those in matched healthy controls. However, no dosage adjustment is necessary

MICRO LABS LTD
COMMON TECHNICAL DOCUMENT MODULE 1, ADMINISTRATIVE
INFORMATION

DOLUTEGRAVIR TABLETS 50 MG

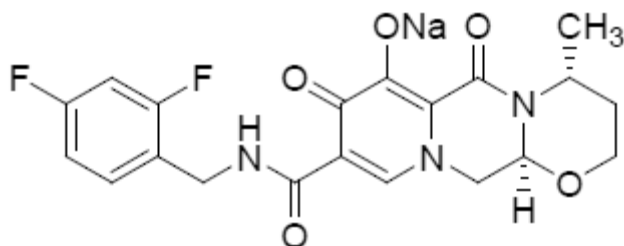
for treatment-naïve or treatment-experienced and INSTI-naïve patients with mild, moderate, or severe renal impairment or for INSTI-experienced patients (with certain INSTI-associated resistance substitutions or clinically suspected INSTI resistance) with mild or moderate renal impairment. Caution is warranted for INSTI-experienced patients (with certain INSTI-associated resistance substitutions or clinically suspected INSTI resistance [see *Microbiology (12.4)*]) with severe renal impairment, as the decrease in dolutegravir concentrations may result in loss of therapeutic effect and development of resistance to dolutegravir or other coadministered antiretroviral agents [see *Clinical Pharmacology (12.3)*]. Dolutegravir has not been studied in patients on dialysis.

10 OVERDOSAGE

There is no known specific treatment for overdose with dolutegravir. If overdose occurs, the patient should be monitored and standard supportive treatment applied as required. As dolutegravir is highly bound to plasma proteins, it is unlikely that it will be significantly removed by dialysis.

11 DESCRIPTION

Dolutegravir tablet contains dolutegravir, as dolutegravir sodium, an HIV INSTI. The chemical name of dolutegravir sodium is sodium (4*R*,12*aS*)-9- {[(2,4-difluorophenyl)methyl]carbamoyl}-4-methyl- 6,8-dioxo-3,4,6,8,12,12*a*-hexahydro-2*H*-pyrido[1',2':4,5]pyrazino[2,1-*b*][1,3]oxazin-7-olate. The molecular formula is C₂₀H₁₈F₂N₃NaO₅ and the molecular weight is 441.36 g per mol. It has the following structural formula:



Dolutegravir sodium is a white to light yellow powder and very slightly soluble in Methanol and practically insoluble in ethanol.

Each film-coated tablet of dolutegravir for oral administration contains 52.6 mg of dolutegravir sodium, which is equivalent to 50 mg dolutegravir free acid, and the following inactive ingredients: D-mannitol, microcrystalline cellulose, povidone K30, sodium starch glycolate, and sodium stearyl fumarate. The tablet film-coating contains the inactive ingredients, D&C Yellow No. 10, FD&C Blue No. 2, macrogol/PEG, polyvinyl alcohol, talc, and titanium dioxide.

12 CLINICAL PHARMACOLOGY

12.1 Mechanism of Action

MICRO LABS LTD
COMMON TECHNICAL DOCUMENT MODULE 1, ADMINISTRATIVE
INFORMATION
DOLUTEGRAVIR TABLETS 50 MG

Dolutegravir is an HIV-1 antiretroviral agent [see *Microbiology (12.4)*].

12.2 Pharmacodynamics

Effects on Electrocardiogram

In a randomized, placebo-controlled, cross-over trial, 42 healthy subjects received single-dose oral administrations of placebo, dolutegravir 250-mg suspension (exposures approximately 3-fold of the 50-mg once-daily dose at steady state), and moxifloxacin 400 mg (active control) in random sequence. After baseline and placebo adjustment, the maximum mean QTc change based on Fridericia correction method (QTcF) for dolutegravir was 2.4 msec (1-sided 95% upper CI: 4.9 msec). Dolutegravir did not prolong the QTc interval over 24 hours postdose.

Effects on Renal Function

The effect of dolutegravir on renal function was evaluated in an open-label, randomized, 3-arm, parallel, placebo-controlled trial in healthy subjects (n = 37) who received dolutegravir 50 mg once daily (n = 12), dolutegravir 50 mg twice daily (n = 13), or placebo once daily (n = 12) for 14 days. A decrease in creatinine clearance, as determined by 24-hour urine collection, was observed with both doses of dolutegravir after 14 days of treatment in subjects who received 50 mg once daily (9% decrease) and 50 mg twice daily (13% decrease). Neither dose of dolutegravir had a significant effect on the actual glomerular filtration rate (determined by the clearance of probe drug, iohexol) or effective renal plasma flow (determined by the clearance of probe drug, para-amino hippurate) compared with the placebo.

12.3 Pharmacokinetics

The pharmacokinetic properties of dolutegravir have been evaluated in healthy adult subjects and HIV-1-infected adult subjects. Exposure to dolutegravir was generally similar between healthy subjects and HIV-1-infected subjects. The non-linear exposure of dolutegravir following 50 mg twice daily compared with 50 mg once daily in HIV-1-infected subjects (Table 7) was attributed to the use of metabolic inducers in the background antiretroviral regimens of subjects receiving dolutegravir 50 mg twice daily in clinical trials.

Table 7. Dolutegravir Steady-State Pharmacokinetic Parameter Estimates in HIV-1-Infected Adults

Parameter	50 mg Once Daily Geometric Mean^a (%CV)	50 mg Twice Daily Geometric Mean^b (%CV)
AUC _(0 to 24) (mcg.h/mL)	53.6 (27)	75.1(35)
C _{max} (mcg/mL)	3.67 (20)	4.15(29)
C _{min} (mcg/mL)	1.11 (46)	2.12(47)

MICRO LABS LTD
COMMON TECHNICAL DOCUMENT MODULE 1, ADMINISTRATIVE
INFORMATION
DOLUTEGRAVIR TABLETS 50 MG

^a Based on population pharmacokinetic analyses using data from SPRING-1 and SPRING-2.

^b Based on population pharmacokinetic analyses using data from VIKING (ING112961) and VIKING-3.

Absorption

Following oral administration of dolutegravir, peak plasma concentrations were observed 2 to 3 hours postdose. With once-daily dosing, pharmacokinetic steady state is achieved within approximately 5 days with average accumulation ratios for AUC, C_{max}, and C_{24 h} ranging from 1.2 to 1.5.

Dolutegravir plasma concentrations increased in a less than dose-proportional manner above 50 mg. Dolutegravir is a P-gp substrate *in vitro*. The absolute bioavailability of dolutegravir has not been established.

Effect of Food: Dolutegravir may be taken with or without food. Food increased the extent of absorption and slowed the rate of absorption of dolutegravir. Low-, moderate-, and high-fat meals increased dolutegravir AUC_(0 to ∞) by 33%, 41%, and 66%; increased C_{max} by 46%, 52%, and 67%; and prolonged T_{max} to 3, 4, and 5 hours from 2 hours under fasted conditions, respectively.

Distribution

Dolutegravir is highly bound (greater than or equal to 98.9%) to human plasma proteins based on *in vivo* data and binding is independent of plasma concentration of dolutegravir. The apparent volume of distribution (Vd/F) following 50-mg once-daily administration is estimated at 17.4 L based on a population pharmacokinetic analysis.

Cerebrospinal Fluid (CSF): In 12 treatment-naïve subjects on dolutegravir 50 mg daily plus abacavir/lamivudine, the median dolutegravir concentration in CSF was 13.2 ng per mL (range: 3.74 ng per mL to 18.3 ng per mL) 2 to 6 hours postdose after 16 weeks of treatment. The clinical relevance of this finding has not been established.

Elimination

Dolutegravir has a terminal half-life of approximately 14 hours and an apparent clearance (CL/F) of 1.0 L per hour based on population pharmacokinetic analyses.

Metabolism: Dolutegravir is primarily metabolized via UGT1A1 with some contribution from CYP3A.

Polymorphisms in Drug-Metabolizing Enzymes: In a meta-analysis of healthy subject trials, subjects with UGT1A1 (n = 7) genotypes conferring poor dolutegravir metabolism had a 32% lower clearance of dolutegravir and 46% higher AUC compared with subjects with genotypes associated with normal metabolism via UGT1A1 (n = 41).

MICRO LABS LTD
COMMON TECHNICAL DOCUMENT MODULE 1, ADMINISTRATIVE
INFORMATION
DOLUTEGRAVIR TABLETS 50 MG

Excretion: After a single oral dose of [¹⁴C] dolutegravir, 53% of the total oral dose was excreted unchanged in feces. Thirty-one percent of the total oral dose was excreted in urine, represented by an ether glucuronide of dolutegravir (18.9% of total dose), a metabolite formed by oxidation at the benzylic carbon (3.0% of total dose), and its hydrolytic N-dealkylation product (3.6% of total dose). Renal elimination of unchanged drug was low (less than 1% of the dose).

Specific Populations

Pediatric Patients: The pharmacokinetics of dolutegravir in HIV-1-infected children (n = 17) weighing at least 30 kg (dosed by weight bands, receiving either 35 mg or 50 mg) were similar to those observed in HIV-1-infected adults who received dolutegravir 50 mg once daily (Table 8) [see *Clinical Studies (14.2)*].

Table 8. Dolutegravir Steady-State Pharmacokinetic Parameters in Pediatric Subjects

Weight (n)	Dose of Dolutegravir	Dolutegravir Pharmacokinetic Parameter Estimates Geometric Mean (%CV)		
		C _{max} (mcg/mL)	AUC _(0 to 24) (mcg.h/mL)	C ₂₄ (mcg/mL)
≥40 kg (n = 14)	50 mg once daily	3.89 (43)	50.1 (53)	0.99 (66)
≥30 to <40 kg (n = 3)	35 mg once daily	4.40 (54)	64.6 (64)	1.33 (93)

Geriatric Patients: Population pharmacokinetic analysis indicated age had no clinically relevant effect on the pharmacokinetics of dolutegravir.

Patients with Hepatic Impairment: In a trial comparing 8 subjects with moderate hepatic impairment (Child-Pugh Score B) with 8 matched healthy controls, exposure of dolutegravir from a single 50-mg dose was similar between the 2 groups. The effect of severe hepatic impairment (Child-Pugh Score C) on the pharmacokinetics of dolutegravir has not been studied.

Patients with Renal Impairment: In a trial comparing 8 subjects with severe renal impairment (CrCl less than 30 mL per min) with 8 matched healthy controls, AUC, C_{max}, and C₂₄ of dolutegravir were lower by 40%, 23%, and 43%, respectively, compared with those in matched healthy subjects. Population pharmacokinetic analysis using data from SAILING and VIKING-3 trials indicated that mild and moderate renal impairment had no clinically relevant effect on the exposure of dolutegravir. Dolutegravir has not been studied in patients requiring dialysis.

HBV or HCV Co-infected Patients: Population analyses using pooled pharmacokinetic data from adult trials indicated no clinically relevant effect of HCV co-infection on the pharmacokinetics of dolutegravir. There were limited data on HBV co-infection.

MICRO LABS LTD
COMMON TECHNICAL DOCUMENT MODULE 1, ADMINISTRATIVE
INFORMATION
DOLUTEGRAVIR TABLETS 50 MG

Gender and Race: Population analyses using pooled pharmacokinetic data from adult trials indicated gender and race had no clinically relevant effect on the exposure of dolutegravir.

Drug Interaction Studies

Drug interaction trials were performed with dolutegravir and other drugs likely to be coadministered or commonly used as probes for pharmacokinetic interactions. The effects of dolutegravir on the exposure of coadministered drugs are summarized in Table 9 and the effects of coadministered drugs on the exposure of dolutegravir are summarized in Table 10.

Dosing or regimen recommendations as a result of established and other potentially significant drug-drug interactions with dolutegravir are provided in Table 6 [see *Dosage and Administration (2.2), Drug Interactions (7.3)*].

Table 9. Summary of Effect of Dolutegravir on the Pharmacokinetics of Coadministered Drugs

Coadministered Drug(s) and Dose(s)	Dose of Dolutegravir	n	Geometric Mean Ratio (90% CI) of Pharmacokinetic Parameters of Coadministered Drug with/without Dolutegravir No Effect = 1		
			C _{max}	AUC	C _τ or C ₂₄
Daclatasvir 60 mg once daily	50 mg once daily	12	1.03 (0.84 to 1.25)	0.98 (0.83 to 1.15)	1.06 (0.88 to 1.29)
Elbasvir 50 mg once daily	50 mg single dose	12	0.97 (0.89, 1.05)	0.98 (0.93, 1.04)	0.98 (0.93, 1.03)
Ethinyl estradiol 0.035 mg	50 mg twice daily	15	0.99 (0.91 to 1.08)	1.03 (0.96 to 1.11)	1.02 (0.93 to 1.11)
Grazoprevir 200 mg once daily	50 mg single dose	12	0.64 (0.44, 0.93)	0.81 (0.67, 0.97)	0.86 (0.79, 0.93)
Metformin 500 mg twice daily	50 mg once daily	15 ^a	1.66 (1.53 to 1.81)	1.79 (1.65 to 1.93)	–
Metformin 500 mg twice daily	50 mg twice daily	15 ^a	2.11 (1.91 to 2.33)	2.45 (2.25 to 2.66)	–
Methadone 16 to 150 mg	50 mg twice daily	11	1 (0.94 to 1.06)	0.98 (0.91 to 1.06)	0.99 (0.91 to 1.07)
Midazolam 3 mg	25 mg once daily	10	–	0.95 (0.79 to 1.15)	–
Norelgestromin 0.25 mg	50 mg twice daily	15	0.89 (0.82 to 0.97)	0.98 (0.91 to 1.04)	0.93 (0.85 to 1.03)
Rilpivirine 25 mg once daily	50 mg once daily	16	1.10 (0.99 to 1.22)	1.06 (0.98 to 1.16)	1.21 (1.07 to 1.38)

MICRO LABS LTD
COMMON TECHNICAL DOCUMENT MODULE 1, ADMINISTRATIVE
INFORMATION
DOLUTEGRAVIR TABLETS 50 MG

Sofosbuvir 400 mg once daily Metabolite (GS-331007)	50 mg once daily	24	0.88 (0.80, 0.98) 1.01 (0.93, 1.10)	0.92 (0.85, 0.99) 0.99 (0.97, 1.01)	NA 0.99 (0.97, 1.01)
Tenofovir disoproxil fumarate 300 mg once daily	50 mg once daily	15	1.09 (0.97 to 1.23)	1.12 (1.01 to 1.24)	1.19 (1.04 to 1.35)
Velpatasvir 100 mg once daily	50 mg once daily	24	0.94 (0.86, 1.02)	0.91 (0.84, 0.98)	0.88 (0.82, 0.94)

^a The number of subjects represents the maximum number of subjects that were evaluated.

Table 10. Summary of Effect of Coadministered Drugs on the Pharmacokinetics of Dolutegravir

Coadministered Drug(s) and Dose(s)	Dose of Dolutegravir	n	Geometric Mean Ratio (90% CI) of Dolutegravir Pharmacokinetic Parameters with/without Coadministered Drugs No Effect = 1.00		
			C _{max}	AUC	C _t or C ₂₄
Atazanavir 400 mg once daily	30 mg once daily	12	1.50 (1.40 to 1.59)	1.91 (1.80 to 2.03)	2.80 (2.52 to 3.11)
Atazanavir/ritonavir 300/100 mg once daily	30 mg once daily	12	1.34 (1.25 to 1.42)	1.62 (1.50 to 1.74)	2.21 (1.97 to 2.47)
Darunavir/ritonavir 600/100 mg twice daily	30 mg once daily	15	0.89 (0.83 to 0.97)	0.78 (0.72 to 0.85)	0.62 (0.56 to 0.69)
Efavirenz 600 mg once daily	50 mg once daily	12	0.61 (0.51 to 0.73)	0.43 (0.35 to 0.54)	0.25 (0.18 to 0.34)
Elbasvir/grazoprevir 50/200 mg once daily	50 mg single dose	12	1.22 (1.05, 1.40)	1.16 (1, 1.34)	1.14 (0.95, 1.36)
Etravirine 200 mg twice daily	50 mg once daily	16	0.48 (0.43 to 0.54)	0.29 (0.26 to 0.34)	0.12 (0.09 to 0.16)
Etravirine + darunavir/ritonavir 200 mg + 600/100 mg twice daily	50 mg once daily	9	0.88 (0.78 to 1)	0.75 (0.69 to 0.81)	0.63 (0.52 to 0.76)
Etravirine + lopinavir/ritonavir 200 mg + 400/100 mg twice daily	50 mg once daily	8	1.07 (1.02 to 1.13)	1.11 (1.02 to 1.20)	1.28 (1.13 to 1.45)
Fosamprenavir/ritonavir 700 mg/100 mg twice daily	50 mg once daily	12	0.76 (0.63 to 0.92)	0.65 (0.54 to 0.78)	0.51 (0.41 to 0.63)

MICRO LABS LTD
COMMON TECHNICAL DOCUMENT MODULE 1, ADMINISTRATIVE
INFORMATION
DOLUTEGRAVIR TABLETS 50 MG

Lopinavir/ritonavir 400/100 mg twice daily	30 mg once daily	15	1 (0.94 to 1.07)	0.97 (0.91 to 1.04)	0.94 (0.85 to 1.05)
Rilpivirine 25 mg once daily	50 mg once daily	16	1.13 (1.06 to 1.21)	1.12 (1.05 to 1.19)	1.22 (1.15 to 1.30)
Tenofovir 300 mg once daily	50 mg once daily	15	0.97 (0.87 to 1.08)	1.01 (0.91 to 1.11)	0.92 (0.82 to 1.04)
Tipranavir/ritonavir 500/200 mg twice daily	50 mg once daily	14	0.54 (0.50 to 0.57)	0.41 (0.38 to 0.44)	0.24 (0.21 to 0.27)
Antacid (MAALOX) simultaneous administration	50 mg single dose	16	0.28 (0.23 to 0.33)	0.26 (0.22 to 0.32)	0.26 (0.21 to 0.31)
Antacid (MAALOX) 2 h after dolutegravir	50 mg single dose	16	0.82 (0.69 to 0.98)	0.74 (0.62 to 0.90)	0.70 (0.58 to 0.85)
Calcium carbonate 1,200 mg simultaneous administration (fasted)	50 mg single dose	12	0.63 (0.50 to 0.81)	0.61 (0.47 to 0.80)	0.61 (0.47 to 0.80)
Calcium carbonate 1,200 mg simultaneous administration (fed)	50 mg single dose	11	1.07 (0.83 to 1.38)	1.09 (0.84 to 1.43)	1.08 (0.81 to 1.42)
Calcium carbonate 1,200 mg 2 h after dolutegravir	50 mg single dose	11	1 (0.78 to 1.29)	0.94 (0.72 to 1.23)	0.90 (0.68 to 1.19)
Carbamazepine 300 mg twice daily	50 mg once daily	16 ^c	0.67 (0.61 to 0.73)	0.51 (0.48 to 0.55)	0.27 (0.24 to 0.31)
Daclatasvir 60 mg once daily	50 mg once daily	12	1.29 (1.07 to 1.57)	1.33 (1.11 to 1.59)	1.45 (1.25 to 1.68)
Ferrous fumarate 324 mg simultaneous administration (fasted)	50 mg single dose	11	0.43 (0.35 to 0.52)	0.46 (0.38 to 0.56)	0.44 (0.36 to 0.54)
Ferrous fumarate 324 mg simultaneous administration (fed)	50 mg single dose	11	1.03 (0.84 to 1.26)	0.98 (0.81 to 1.20)	1 (0.81 to 1.23)
Ferrous fumarate 324 mg 2 h after dolutegravir	50 mg single dose	10	0.99 (0.81 to 1.21)	0.95 (0.77 to 1.15)	0.92 (0.74 to 1.13)
Multivitamin (One-A-Day) simultaneous administration	50 mg single dose	16	0.65 (0.54 to 0.77)	0.67 (0.55 to 0.81)	0.68 (0.56 to 0.82)
Omeprazole 40 mg once daily	50 mg single dose	12	0.92 (0.75 to 1.11)	0.97 (0.78 to 1.20)	0.95 (0.75 to 1.21)

MICRO LABS LTD
COMMON TECHNICAL DOCUMENT MODULE 1, ADMINISTRATIVE
INFORMATION
DOLUTEGRAVIR TABLETS 50 MG

Prednisone 60 mg once daily with taper	50 mg once daily	12	1.06 (0.99 to 1.14)	1.11 (1.03 to 1.20)	1.17 (1.06 to 1.28)
Rifampina 600 mg once daily	50 mg twice daily	11	0.57 (0.49 to 0.65)	0.46 (0.38 to 0.55)	0.28 (0.23 to 0.34)
Rifampinb 600 mg once daily	50 mg twice daily	11	1.18 (1.03 to 1.37)	1.33 (1.15 to 1.53)	1.22 (1.01 to 1.48)
Rifabutin 300 mg once daily	50 mg once daily	9	1.16 (0.98 to 1.37)	0.95 (0.82 to 1.10)	0.70 (0.57 to 0.87)

^a Comparison is rifampin taken with dolutegravir 50 mg twice daily compared with dolutegravir 50 mg twice daily.

^b Comparison is rifampin taken with dolutegravir 50 mg twice daily compared with dolutegravir 50 mg once daily.

^c The number of subjects represents the maximum number of subjects that were evaluated.

12.4 Microbiology

Mechanism of Action

Dolutegravir inhibits HIV integrase by binding to the integrase active site and blocking the strand transfer step of retroviral deoxyribonucleic acid (DNA) integration which is essential for the HIV replication cycle. Strand transfer biochemical assays using purified HIV-1 integrase and pre-processed substrate DNA resulted in IC₅₀ values of 2.7 nM and 12.6 nM.

Antiviral Activity in Cell Culture

Dolutegravir exhibited antiviral activity against laboratory strains of wild-type HIV-1 with mean EC₅₀ values of 0.5 nM (0.21 ng per mL) to 2.1 nM (0.85 ng per mL) in peripheral blood mononuclear cells (PBMCs) and MT-4 cells. Dolutegravir exhibited antiviral activity against 13 clinically diverse clade B isolates with a mean EC₅₀ value of 0.52 nM in a viral integrase susceptibility assay using the integrase coding region from clinical isolates. Dolutegravir demonstrated antiviral activity in cell culture against a panel of HIV-1 clinical isolates (3 in each group of M clades A, B, C, D, E, F, and G, and 3 in group O) with EC₅₀ values ranging from 0.02 nM to 2.14 nM for HIV-1. Dolutegravir EC₅₀ values against 3 HIV-2 clinical isolates in PBMC assays ranged from 0.09 nM to 0.61 nM.

Antiviral Activity in Combination with Other Antiviral Agents

The antiviral activity of dolutegravir was not antagonistic when combined with the INSTI, raltegravir; non-nucleoside reverse transcriptase inhibitors (NNRTIs), efavirenz or nevirapine; the nucleoside reverse transcriptase inhibitors (NRTIs), abacavir or stavudine; the protease inhibitors (PIs), amprenavir or lopinavir; the CCR5 co-receptor antagonist, maraviroc; or the fusion inhibitor, enfuvirtide. Dolutegravir antiviral activity was not antagonistic when combined with the HBV reverse transcriptase inhibitor, adefovir, or inhibited by the antiviral, ribavirin.

MICRO LABS LTD
COMMON TECHNICAL DOCUMENT MODULE 1, ADMINISTRATIVE
INFORMATION
DOLUTEGRAVIR TABLETS 50 MG

Resistance

Cell Culture: Dolutegravir-resistant viruses were selected in cell culture starting from different wild-type HIV-1 strains and clades. Amino acid substitutions E92Q, G118R, S153F or Y, G193E or R263K emerged in different passages and conferred decreased susceptibility to dolutegravir of up to 4-fold. Passage of mutant viruses containing the Q148R or Q148H substitutions selected for additional substitutions in integrase that conferred decreased susceptibility to dolutegravir (fold-change increase of 13 to 46). The additional integrase substitutions included T97A, E138K, G140S, and M154I. Passage of mutant viruses containing both G140S and Q148H selected for L74M, E92Q, and N155H.

Treatment-Naïve Subjects: No subjects in the dolutegravir 50-mg once-daily treatment arms of treatment-naïve trials SPRING-2 (96 weeks) and SINGLE (144 weeks) had a detectable decrease in susceptibility to dolutegravir or background NRTIs in the resistance analysis subset (n = 12 with HIV-1 RNA greater than 400 copies per mL at failure or last visit and having resistance data). Two virologic failure subjects in SINGLE had treatment-emergent G/D/E193D and G193G/E integrase substitutions at Week 84 and Week 108, respectively, and 1 subject with 275 copies per mL HIV-1 RNA had a treatment-emergent Q157Q/P integrase substitution detected at Week 24. None of these subjects had a corresponding decrease in dolutegravir susceptibility. No treatment-emergent genotypic resistance to the background regimen was observed in the dolutegravir arm in either the SPRING-2 or SINGLE trials. No treatment-emergent primary resistance substitutions were observed in either treatment group in the FLAMINGO trial through Week 96.

Treatment-Experienced, Integrase Strand Transfer Inhibitor-Naïve Subjects: In the dolutegravir arm of the SAILING trial for treatment-experienced and INSTI-naïve subjects (n = 354), treatment-emergent integrase substitutions were observed in 6 of 28 (21%) subjects who had virologic failure and resistance data. In 5 of the 6 subjects' isolates emergent INSTI substitutions included L74L/M/I, Q95Q/L, V151V/I (n = 1 each), and R263K (n = 2). The change in dolutegravir phenotypic susceptibility for these 5 subject isolates was less than 2-fold. One subject isolate had pre-existing raltegravir resistance substitutions E138A, G140S, and Q148H at baseline and had additional emergent INSTI-resistance substitutions T97A and E138A/T with a corresponding 148-fold reduction in dolutegravir susceptibility at failure. In the comparator raltegravir arm, 21 of 49 (43%) subjects with post-baseline resistance data had evidence of emergent INSTI-resistance substitutions (L74M, E92Q, T97A, E138Q, G140S/A, Y143R/C, Q148H/R, V151I, N155H, E157Q, and G163K/R) and raltegravir phenotypic resistance.

Virologically Suppressed Subjects: SWORD-1 and SWORD-2 are identical trials in virologically suppressed subjects receiving 2 NRTIs plus either an INSTI, an NNRTI, or a PI, that switched to dolutegravir plus rilpivirine (n = 513) or remained on their current antiviral regimen (n = 511). Two subjects in each treatment arm had confirmed virologic failure at any time through Week 48. The 2 subjects in the dolutegravir/rilpivirine arm had detectable resistance substitutions at rebound. One subject had the NNRTI-resistance-associated substitution K101K/E with no decreased susceptibility to rilpivirine (fold-change = 1.2) at Week 36, had no INSTI resistance-

MICRO LABS LTD
COMMON TECHNICAL DOCUMENT MODULE 1, ADMINISTRATIVE
INFORMATION
DOLUTEGRAVIR TABLETS 50 MG

associated substitutions or decreased susceptibility to dolutegravir (fold-change less than 2), and had HIV-1 RNA less than 50 copies per mL at the withdrawal visit. The other subject had the dolutegravir resistance-associated substitution G193E at baseline (by exploratory HIV proviral DNA archive sequencing) and at Week 24 (by conventional sequencing) without decreased susceptibility to dolutegravir (fold-change = 1.02) at Week 24. No resistance-associated substitutions were observed for the other 2 subjects in the comparative current antiretroviral regimen arm.

Treatment-Experienced, Integrase Strand Transfer Inhibitor-Experienced Subjects: VIKING-3 examined the efficacy of dolutegravir 50 mg twice daily plus optimized background therapy in subjects with prior or current virologic failure on an INSTI- (elvitegravir or raltegravir) containing regimen. Use of dolutegravir in INSTI-experienced patients should be guided by the number and type of baseline INSTI substitutions. The efficacy of dolutegravir 50 mg twice daily is reduced in patients with an INSTI-resistance Q148 substitution plus 2 or more additional INSTI-resistance substitutions, including T66A, L74I/M, E138A/K/T, G140S/A/C, Y143R/C/H, E157Q, G163S/E/K/Q, or G193E/R.

Response by Baseline Genotype

Of the 183 subjects with baseline data, 30% harbored virus with a substitution at Q148, and 33% had no primary INSTI-resistance substitutions (T66A/I/K, E92Q/V, Y143R/C/H, Q148H/R/K, and N155H) at baseline, but had historical genotypic evidence of INSTI-resistance substitutions, phenotypic evidence of elvitegravir or raltegravir resistance, or genotypic evidence of INSTI-resistance substitutions at screening.

Response rates by baseline genotype were analyzed in an “as-treated” analysis at Week 48 (n = 175) (Table 11). The response rate at Week 48 to dolutegravir-containing regimens was 47% (24 of 51) when Q148 substitutions were present at baseline; Q148 was always present with additional INSTI-resistance substitutions (see Table 11). In addition, a diminished virologic response of 40% (6 of 15) was observed when the substitution E157Q or K was present at baseline with other INSTI-resistance substitutions but without a Q148H or R substitution.

Table 11. Response by Baseline Integrase Genotype in Subjects with Prior Experience to an Integrase Strand Transfer Inhibitor in VIKING-3

Baseline Genotype	Week 48 (<50 copies/mL) n = 175
Overall Response	66% (116/175)
No Q148 substitution ^a	74% (92/124)
Q148H/R + G140S/A/C without additional INSTI-resistance substitution ^b	61% (17/28)
Q148H/R + ≥2 INSTI-resistance substitutions ^{b,c}	29% (6/21)

^a Includes INSTI-resistance substitutions Y143R/C/H and N155H.

MICRO LABS LTD
COMMON TECHNICAL DOCUMENT MODULE 1, ADMINISTRATIVE
INFORMATION

DOLUTEGRAVIR TABLETS 50 MG

^b INSTI-resistance substitutions included T66A, L74I/M, E138A/K/T, G140S/A/C, Y143R/C/H, E157Q, G163S/E/K/Q, or G193E/R. Two additional subjects had baseline genotypes of Q148Q/R plus L74L/I/M (virologic failure) and Q148R plus E138K (responder).

^c The most common pathway with Q148H/R + greater than or equal to 2 INSTI-resistance substitutions had Q148+G140+E138 substitutions (n = 16).

Response by Baseline Phenotype

Response rates by baseline phenotype were analyzed in an as-treated analysis using all subjects with available baseline phenotypes through Week 48 (n = 163) (see Table 12). These baseline phenotypic groups are based on subjects enrolled in VIKING-3 and are not meant to represent definitive clinical susceptibility cut points for dolutegravir. The data are provided to guide clinicians on the likelihood of virologic success based on pretreatment susceptibility to dolutegravir in INSTI-resistant patients.

Table 12. Response by Baseline Dolutegravir Phenotype (Fold-Change from Reference) in Subjects with Prior Experience to an Integrase Strand Transfer Inhibitor in VIKING-3

Baseline Dolutegravir Phenotype (Fold-Change from Reference)	Response at Week 48 (<50 copies/mL) Subset n = 163
Overall Response	64% (104/163)
<3-fold change	72% (83/116)
3- <10-fold change	53% (18/34)
≥10-fold change	23% (3/13)

Integrase Strand Transfer Inhibitor Treatment-Emergent Resistance

There were 50 subjects with virologic failure on the dolutegravir twice-daily regimen in VIKING-3 with HIV-1 RNA greater than 400 copies per mL at the failure timepoint, Week 48 or beyond, or the last timepoint on trial. Thirty-nine subjects with virologic failure had resistance data that were used in the Week 48 analysis. In the Week 48 resistance analysis 85% (33 of 39) of the subjects with virologic failure had treatment-emergent INSTI-resistance substitutions in their isolates. The most common treatment-emergent INSTI-resistance substitution was T97A. Other frequently emergent INSTI-resistance substitutions included L74M, I or V, E138K or A, G140S, Q148H, R or K, M154I, or N155H. Substitutions E92Q, Y143R or C/H, S147G, V151A, and E157E/Q each emerged in 1 to 3 subjects' isolates. At failure, the median dolutegravir fold-change from reference was 61-fold (range: 0.75 to 209) for isolates with emergent INSTI-resistance substitutions (n = 33).

Resistance to one or more background drugs in the dolutegravir twice-daily regimen also emerged in 49% (19 of 39) of subjects in the Week 48 resistance analysis.

MICRO LABS LTD
COMMON TECHNICAL DOCUMENT MODULE 1, ADMINISTRATIVE
INFORMATION

DOLUTEGRAVIR TABLETS 50 MG

In VIKING-4 (ING116529), 30 subjects with current virological failure on an INSTI-containing regimen and genotypic evidence of INSTI-resistance substitutions at screening were randomized to receive either dolutegravir 50 mg twice daily or placebo with the current failing regimen for 7 days and then all subjects received open-label dolutegravir plus optimized background regimen from Day 8. Virologic responses at Week 48 by baseline genotypic and phenotypic INSTI-resistance categories and the INSTI resistance-associated substitutions that emerged on dolutegravir treatment in VIKING-4 were consistent with those seen in VIKING-3.

Cross-Resistance

Site-Directed Integrase Strand Transfer Inhibitor-Resistant Mutant HIV-1 and HIV-2 Strains:

The susceptibility of dolutegravir was tested against 60 INSTI-resistant site-directed mutant HIV-1 viruses (28 with single substitutions and 32 with 2 or more substitutions) and 6 INSTI-resistant site-directed mutant HIV-2 viruses. The single INSTI-resistance substitutions T66K, I151L, and S153Y conferred a greater than 2-fold decrease in dolutegravir susceptibility (range: 2.3-fold to 3.6-fold from reference). Combinations of multiple substitutions T66K/L74M, E92Q/N155H, G140C/Q148R, G140S/Q148H, R or K, Q148R/N155H, T97A/G140S/Q148, and substitutions at E138/G140/Q148 showed a greater than 2-fold decrease in dolutegravir susceptibility (range: 2.5-fold to 21-fold from reference). In HIV-2 mutants, combinations of substitutions A153G/N155H/S163G and E92Q/T97A/N155H/S163D conferred 4-fold decreases in dolutegravir susceptibility, and E92Q/N155H and G140S/Q148R showed 8.5-fold and 17-fold decreases in dolutegravir susceptibility, respectively.

Reverse Transcriptase Inhibitor- and Protease Inhibitor-Resistant Strains: Dolutegravir demonstrated equivalent antiviral activity against 2 NNRTI-resistant, 3 NRTI-resistant, and 2 PI-resistant HIV-1 mutant clones compared with the wild-type strain.

13 NONCLINICAL TOXICOLOGY

13.1 Carcinogenesis, Mutagenesis, Impairment of Fertility

Carcinogenesis

Two-year carcinogenicity studies in mice and rats were conducted with dolutegravir. Mice were administered doses of up to 500 mg per kg, and rats were administered doses of up to 50 mg per kg. In mice, no significant increases in the incidence of drug-related neoplasms were observed at the highest doses tested, resulting in dolutegravir AUC exposures approximately 14 times higher than those in humans at the recommended dose of 50 mg twice daily. In rats, no increases in the incidence of drug-related neoplasms were observed at the highest dose tested, resulting in dolutegravir AUC exposures 10 times and 15 times higher in males and females, respectively, than those in humans at the recommended dose of 50 mg twice daily.

Mutagenesis

Dolutegravir was not genotoxic in the bacterial reverse mutation assay, mouse lymphoma assay,

MICRO LABS LTD
COMMON TECHNICAL DOCUMENT MODULE 1, ADMINISTRATIVE
INFORMATION
DOLUTEGRAVIR TABLETS 50 MG
or in the in vivo rodent micronucleus assay.

Impairment of Fertility

In a study conducted in rats, there were no effects on mating or fertility with dolutegravir up to 1,000 mg per kg per day. This dose is associated with an exposure that is approximately 24 times higher than the exposure in humans at the recommended dose of 50 mg twice daily.

14 CLINICAL STUDIES

14.1 Description of Clinical Studies

The efficacy and safety of dolutegravir were evaluated in the studies summarized in Table 13.

Table 13. Trials Conducted with Dolutegravir in HIV-1-Infected Subjects

Population	Trial	Trial Arms	Time point (Week)
Adults: Treatment-naïve	SPRING-2 (ING113086) (NCT01227824)	Dolutegravir + 2 NRTIs (n = 403) Raltegravir +3 NRTIs (n = 405)	96
	SINGLE (ING114467) (NCT01263015)	Dolutegravir + EPZICOM (n = 414) ATRIPLA (n = 419)	144
	FLAMINGO (ING114915) (NCT01449929)	Dolutegravir + NRTI BR (n = 243) Darunavir/ritonavir + NRTI BR (n = 242)	96
Treatment-experienced, INSTI-naïve	SAILING (ING111762) (NCT01231516)	Dolutegravir + BR (n = 354) Raltegravir + BR (n = 361)	48
INSTI-experienced	VIKING-3 (ING112574) (NCT01328041)	Dolutegravir + OBТ (n = 183)	48
Virologically suppressed	SWORD-1 (NCT02429791) SWORD-2 (NCT02422797)	Pooled presentation Dolutegravir + Rilpivirine (n = 513) CAR (n = 511)	48
Pediatrics: 6 years and older without INSTI resistance	IMPAACT 1093 (NCT01302847)	Dolutegravir + BR (n = 46)	48

BR = Background regimen; CAR = Current antiretroviral regimen; OBТ = Optimized background therapy

**MICRO LABS LTD
COMMON TECHNICAL DOCUMENT MODULE 1, ADMINISTRATIVE
INFORMATION
DOLUTEGRAVIR TABLETS 50 MG**

14.2 Adult Subjects

Treatment-Naïve Subjects

In SPRING-2, 822 subjects were randomized and received at least 1 dose of either dolutegravir 50 mg once daily or raltegravir 400 mg twice daily, both in combination with fixed-dose dual NRTI treatment (either abacavir sulfate and lamivudine [EPZICOM] or emtricitabine/tenofovir [TRUVADA]). There were 808 subjects included in the efficacy and safety analyses. At baseline, the median age of subjects was 36 years, 13% female, 15% non-white, 11% had hepatitis B and/or C virus co-infection, 2% were CDC Class C (AIDS), 28% had HIV-1 RNA greater than 100,000 copies per mL, 48% had CD4+ cell count less than 350 cells per mm³, and 39% received EPZICOM; these characteristics were similar between treatment groups.

In SINGLE, 833 subjects were randomized and received at least 1 dose of either dolutegravir 50 mg once daily with fixed-dose abacavir sulfate and lamivudine (EPZICOM) or fixed-dose efavirenz/emtricitabine/tenofovir (ATRIPLA). At baseline, the median age of subjects was 35 years, 16% female, 32% non-white, 7% had hepatitis C co-infection (hepatitis B virus co-infection was excluded), 4% were CDC Class C (AIDS), 32% had HIV-1 RNA greater than 100,000 copies per mL, and 53% had CD4+ cell count less than 350 cells per mm³; these characteristics were similar between treatment groups.

Outcomes for SPRING-2 (Week 96 analysis) and SINGLE (Week 144 open-label phase analysis which followed the Week 96 double-blind phase) are provided in Table 14. Side-by-side tabulation is to simplify presentation; direct comparisons across trials should not be made due to differing trial designs.

Table 14. Virologic Outcomes of Randomized Treatment in SPRING-2 at Week 96 and SINGLE at Week 144 (Snapshot Algorithm)

	SPRING-2 Week 96		SINGL E	
	Dolutegravir 50 mg Once Daily + 2 NRTIs (n = 403)	Raltegravir 400 mg Twice Daily + 2 NRTIs (n = 405)	Dolutegravir 50 mg + EPZICOM Once Daily (n = 414)	ATRIPLA Once Daily (n = 419)
HIV-1 RNA <50 copies/mL	82%	78%	71%	63%
Treatment difference ^a	4.9% (95% CI: -0.6%, 10.3%) ^d		8.3% (95% CI: 2%, 14.6%) ^e	
Virologic nonresponse	5%	10%	10%	7%

MICRO LABS LTD
COMMON TECHNICAL DOCUMENT MODULE 1, ADMINISTRATIVE
INFORMATION
DOLUTEGRAVIR TABLETS 50 MG

Data in window not <50 copies/mL	1%	3%	4%	<1%
Discontinued for lack of efficacy	2%	3%	3%	3%
Discontinued for other reasons while not suppressed	<1%	3%	3%	4%
Change in ART regimen	<1%	<1%	0	0
No virologic data	12%	12%	18%	30%
Reasons				
Discontinued study/study drug due to adverse event or death ^b	2%	2%	4%	14%
Discontinued study/study drug for other reasons ^c	8%	9%	12%	13%
Missing data during window but on study	2%	<1%	2%	3%
Proportion (%) of Subjects with HIV-1 RNA <50 copies/mL by Baseline Category				
Plasma viral load (copies/mL)				
≤ 100,000	84%	83%	73%	64%
>100,000	79%	63%	69%	61%
Gender				
Male	84%	79%	72%	66%
Female	70%	68%	69%	48%
Race				
White	83%	78%	72%	71%
African-American/African Heritage/Other	77%	75%	71%	47%

a. Adjusted for pre-specified stratification factors.

b. Includes subjects who discontinued due to an adverse event or death at any time point if this resulted in no virologic data on treatment during the analysis window.

c. Other includes reasons such as withdrew consent, loss to follow-up, moved, and protocol deviation.

d. The primary endpoint was assessed at Week 48 and the virologic success rate was 88% in the group receiving dolutegravir and 86% in the raltegravir group, with a treatment difference of 2.6% and 95% CI of (-1.9%, 7.2%).

e. The primary endpoint was assessed at Week 48 and the virologic success rate was 88% in the group receiving dolutegravir and 81% in the ATRIPLA group, with a treatment difference of 7.4% and 95% CI of (2.5%, 12.3%).

SPRING-2: Virologic outcomes were also comparable across baseline characteristics including CD4+ cell count, age, and use of EPZICOM or TRUVADA as NRTI background regimen. The median change in CD4+ cell counts from baseline was 276 cells per mm³ in the group receiving

MICRO LABS LTD
COMMON TECHNICAL DOCUMENT MODULE 1, ADMINISTRATIVE
INFORMATION
DOLUTEGRAVIR TABLETS 50 MG

dolutegravir and 264 cells per mm³ for the raltegravir group at 96 weeks.

There was no treatment-emergent resistance to dolutegravir or to the NRTI background.

SINGLE: Treatment differences were maintained across baseline characteristics including baseline viral load, CD4+ cell count, age, gender, and race.

The adjusted mean changes in CD4+ cell counts from baseline were 378 cells per mm³ in the group receiving dolutegravir + EPZICOM and 332 cells per mm³ for the ATRIPLA group at 144 weeks. The adjusted difference between treatment arms and 95% CI was 46.9 cells per mm³ (15.6 cells per mm³, 78.2 cells per mm³) (adjusted for pre-specified stratification factors: baseline HIV-1 RNA, and baseline CD4+ cell count).

There was no treatment-emergent resistance to dolutegravir, abacavir, or lamivudine.

FLAMINGO: In FLAMINGO, 485 subjects were randomized and received at least 1 dose of either dolutegravir 50 mg once daily (n = 243) or darunavir + ritonavir 800 mg/100 mg once daily (n = 242), both in combination with investigator-selected NRTI background regimen (either fixed-dose abacavir and lamivudine [EPZICOM] or fixed-dose emtricitabine/tenofovir disoproxil fumarate [TRUVADA]). There were 484 subjects included in the efficacy and safety analyses. At baseline, the median age of subjects was 34 years, 15% female, 28% non-white, 10% had hepatitis B and/or C virus co-infection, 3% were CDC Class C (AIDS), 25% had HIV-1 RNA greater than 100,000 copies per mL, and 35% had CD4+ cell count less than 350 cells per mm³; these characteristics were similar between treatment groups. Overall response rates by Snapshot algorithm through Week 96 were 80% for dolutegravir and 68% for darunavir/ritonavir. The proportion of subjects who were non-responders (HIV-1 RNA greater than or equal to 50 copies per mL) at Week 96 was 8% and 12% in the arms receiving dolutegravir and darunavir + ritonavir, respectively; no virologic data were available for 12% and 21% for subjects treated with dolutegravir and darunavir + ritonavir, respectively. The adjusted overall response rate difference in proportion and 95% CI was 12.4% (4.7%, 20.2%). No treatment-emergent primary resistance substitutions were observed in either treatment group.

Treatment-Experienced, Integrase Strand Transfer Inhibitor-Naïve Subjects

In the international, multicenter, double-blind trial (SAILING), 719 HIV-1-infected, antiretroviral treatment-experienced adults were randomized and received either dolutegravir 50 mg once daily or raltegravir 400 mg twice daily with investigator-selected background regimen consisting of up to 2 agents, including at least 1 fully active agent. There were 715 subjects included in the efficacy and safety analyses. At baseline, the median age was 43 years, 32% were female, 50% non-white, 16% had hepatitis B and/or C virus co-infection, 46% were CDC Class C (AIDS), 20% had HIV-1 RNA greater than 100,000 copies per mL, and 72% had CD4+ cell count less than 350 cells per mm³; these characteristics were similar between treatment groups. All subjects had at least 2-class antiretroviral treatment resistance, and 49% of subjects had at least 3-class antiretroviral treatment resistance at baseline. Week 48 outcomes for SAILING are shown in Table 15.

Table 15. Virologic Outcomes of Randomized Treatment in SAILING at 48 Weeks (Snapshot Algorithm)

MICRO LABS LTD
COMMON TECHNICAL DOCUMENT MODULE 1, ADMINISTRATIVE
INFORMATION
DOLUTEGRAVIR TABLETS 50 MG

	Dolutegravir 50 mg Once Daily + BR^a (n = 354)	Raltegravir 400 mg Twice Daily + BR_a (n = 361)
HIV-1 RNA <50 copies/mL	71%	64%
Adjusted ^b treatment difference	7.4% (95% CI: 0.7%, 14.2%)	
Virologic nonresponse	20%	28%
No virologic data	9%	9%
Reasons		
Discontinued study/study drug due to adverse event or death	3%	4%
Discontinued study/study drug for other reasons ^c	5%	4%
Missing data during window but on study	2%	1%
Proportion (%) with HIV-1 RNA <50 copies/mL by Baseline Category		
Plasma viral load (copies/mL)		
≤50,000 copies/mL	75%	71%
>50,000 copies/mL	62%	47%
Background regimen		
No darunavir use	67%	60%
Darunavir use with primary PI substitutions	85%	67%
Darunavir use without primary PI substitutions	69%	70%
Gender		
Male	70%	66%
Female	74%	60%
Race		
White	75%	71%
African-American/African Heritage/Other	67%	57%

^a BR = Background regimen. Background regimen was restricted to less than or equal to 2 antiretroviral treatments with at least 1 fully active agent.

^b Adjusted for pre-specified stratification factors.

^c Other includes reasons such as withdrew consent, loss to follow-up, moved, and protocol deviation.

Treatment differences were maintained across the baseline characteristics including CD4+ cell count and age.

The mean changes in CD4+ cell counts from baseline were 162 cells per mm³ in the group receiving dolutegravir and 153 cells per mm³ in the raltegravir group.

Treatment-Experienced, Integrase Strand Transfer Inhibitor-Experienced Subjects VIKING-3 examined the effect of dolutegravir 50 mg twice daily over 7 days of functional monotherapy,

MICRO LABS LTD
COMMON TECHNICAL DOCUMENT MODULE 1, ADMINISTRATIVE
INFORMATION
DOLUTEGRAVIR TABLETS 50 MG

followed by optimized background therapy (OBT) with continued treatment of dolutegravir 50 mg twice daily.

In the multicenter, open-label, single-arm VIKING-3 trial, 183 HIV-1-infected, antiretroviral treatment-experienced adults with virological failure and current or historical evidence of raltegravir and/or elvitegravir resistance received dolutegravir 50 mg twice daily with the current failing background regimen for 7 days, then received dolutegravir with OBT from Day 8. A total of 183 subjects enrolled: 133 subjects with INSTI resistance at screening and 50 subjects with only historical evidence of resistance (and not at screening). At baseline, median age of subjects was 48 years; 23% were female, 29% non-white, and 20% had hepatitis B and/or C virus co-infection. Median baseline CD4+ cell count was 140 cells per mm³, median duration of prior antiretroviral treatment was 13 years, and 56% were CDC Class C. Subjects showed multiple-class antiretroviral treatment resistance at baseline: 79% had greater than or equal to 2 NRTI, 75% greater than or equal to 1 NNRTI, and 71% greater than or equal to 2 PI major substitutions; 62% had non-R5 virus.

Mean reduction from baseline in HIV-1 RNA at Day 8 (primary endpoint) was 1.4 log₁₀ (95% CI: 1.3 log₁₀, 1.5 log₁₀). Response at Week 48 was affected by baseline INSTI substitutions [*see Microbiology (12.4)*].

After the functional monotherapy phase, subjects had the opportunity to re-optimize their background regimen when possible. Week 48 virologic outcomes for VIKING-3 are shown in Table 16.

Table 16. Virologic Outcomes of Treatment of VIKING-3 at 48 Weeks (Snapshot Algorithm)

	Dolutegravir 50 mg Twice Daily + OBT (n = 183)
HIV-1 RNA <50 copies/mL	63%
Virologic nonresponse	32%
No virologic data	
Reasons	
Discontinued study/study drug due to adverse event or death	3%
Proportion (%) with HIV-1 RNA <50 copies/mL by Baseline Category	
Gender	
Male	63%
Female	64%
Race	
White	63%
African-American/African Heritage/Other	64%

Subjects harboring virus with Q148 and with additional Q148-associated secondary substitutions also had a reduced response at Week 48 in a stepwise fashion [*see Microbiology (12.4)*].

The median change in CD4+ cell count from baseline was 80 cells per mm³ at Week 48.

MICRO LABS LTD
COMMON TECHNICAL DOCUMENT MODULE 1, ADMINISTRATIVE
INFORMATION
DOLUTEGRAVIR TABLETS 50 MG

Virologically Suppressed Subjects

SWORD-1 and SWORD-2 are identical 148-week, Phase 3, randomized, multicenter, parallel-group, non-inferiority trials. A total of 1,024 adult HIV-1-infected subjects who were on a stable suppressive antiretroviral regimen (containing 2 NRTIs plus either an INSTI, an NNRTI, or a PI) for at least 6 months (HIV-1 RNA less than 50 copies per mL), with no history of treatment failure and no known substitutions associated with resistance to dolutegravir or rilpivirine received treatment in the trials. Subjects were randomized 1:1 to continue their current antiretroviral regimen or be switched to dolutegravir 50 mg plus rilpivirine 25 mg administered once daily. The primary efficacy endpoint for the SWORD trial was the proportion of subjects with plasma HIV-1 RNA less than 50 copies per mL at Week 48. The proportion of subjects with HIV-1 RNA less than 50 copies per mL at Week 48 was 95% for both treatment groups; treatment difference and 95% CI was -0.2% (-3.0%, 2.5%). The proportion of subjects with HIV-1 RNA greater than or equal to 50 copies per mL (virologic failure) at Week 48 was 0.6% and 1.2% for the dolutegravir plus rilpivirine treatment group and the current antiretroviral regimen treatment groups, respectively; treatment difference and 95% CI was -0.6% (-1.7%, 0.6%). Refer to the Prescribing Information for JULUCA (dolutegravir and rilpivirine) tablet for complete virologic outcome information.

14.3 Pediatric Subjects

IMPAACT P1093 is a Phase 1/2, 48-week, multicenter, open-label trial to evaluate the pharmacokinetic parameters, safety, tolerability, and efficacy of dolutegravir in combination treatment regimens in HIV-1-infected infants, children, and adolescents. Subjects were stratified by age, enrolling adolescents first (Cohort 1: aged 12 to less than 18 years) and then younger children (Cohort 2A: aged 6 to less than 12 years). All subjects received a weight-based dose of dolutegravir [*see Dosage and Administration (2.2)*].

These 46 subjects had a mean age of 12 years (range: 6 to 17), were 54% female and 52% black. At baseline, mean plasma HIV-1 RNA was 4.6 log₁₀ copies per mL, median CD4⁺ cell count was 639 cells per mm³ (range: 9 to 1,700), and median CD4⁺% was 23% (range: 1% to 44%). Overall, 39% had baseline plasma HIV-1 RNA greater than 50,000 copies per mL and 33% had a CDC HIV clinical classification of category C. Most subjects had previously used at least 1 NNRTI (50%) or 1 PI (70%).

At Week 24, the proportion of subjects with HIV-1 RNA less than 50 copies per mL in Cohort 1 and Cohort 2A was 70% (16/23) and 61% (14/23), respectively. At Week 48, the proportion of subjects from Cohort 1 with HIV-1 RNA less than 50 copies per mL was 61% (14/23). Virologic outcomes were also evaluated based on body weight. Across both cohorts, virologic suppression (HIV-1 RNA less than 50 copies per mL) at Week 24 was achieved in 75% (18/24) of subjects weighing at least 40 kg and 55% (6/11) of subjects in the 30 to less than 40 kg weight-band. At Week 48, 63% (12/19) of the subjects in Cohort 1 weighing at least 40 kg were virologically suppressed.

The median CD4⁺ cell count increase from baseline to Week 48 was 84 cells per mm³ in Cohort 1. For Cohort 2A, the median CD4⁺ cell count increase from baseline to Week 24 was 209 cells per mm³.

MICRO LABS LTD
COMMON TECHNICAL DOCUMENT MODULE 1, ADMINISTRATIVE
INFORMATION
DOLUTEGRAVIR TABLETS 50 MG

16 HOW SUPPLIED/STORAGE AND HANDLING

Dolutegravir tablets, 50 mg, are green round biconvex tablets debossed with “C” on one side and “90” on the other side.

Bottle of 30 tablets with child-resistant closure	NDC 42571-319-30
Bottle of 60 tablets with child-resistant closure	NDC 42571-319-60
Bottle of 90 tablets with child-resistant closure	NDC 42571-319-90

Store at 25°C (77°F); excursions permitted 15° to 30°C (59° to 86°F) [See USP Controlled Room Temperature].

17 PATIENT COUNSELING INFORMATION

Advise the patient to read the FDA-approved patient labeling (Patient Information).

Drug Interactions

Dolutegravir may interact with other drugs; therefore, advise patients to report to their healthcare provider the use of any other prescription or nonprescription medication or herbal products, including St. John’s wort [see *Contraindications (4)*, *Drug Interactions (7)*].

Hypersensitivity Reactions

Advise patients to immediately contact their healthcare provider if they develop rash. Instruct patients to immediately stop taking dolutegravir and other suspect agents, and seek medical attention if they develop a rash associated with any of the following symptoms, as it may be a sign of a more serious reaction such as severe hypersensitivity: fever; generally ill feeling; extreme tiredness; muscle or joint aches; blisters or peeling of the skin; oral blisters or lesions; eye inflammation; facial swelling; swelling of the eyes, lips, tongue, or mouth; breathing difficulty; and/or signs and symptoms of liver problems (e.g., yellowing of the skin or whites of the eyes, dark or tea-colored urine, pale-colored stools or bowel movements, nausea, vomiting, loss of appetite, or pain, aching, or sensitivity on the right side below the ribs) [see *Warnings and Precautions (5.1)*].

Hepatotoxicity

Inform patients that hepatotoxicity has been reported with dolutegravir [see *Warnings and Precautions (5.2)*]. Advise patients that laboratory monitoring for hepatotoxicity during therapy with dolutegravir is recommended, especially for patients with liver disease, such as hepatitis B or C.

Embryo-Fetal Toxicity

MICRO LABS LTD
COMMON TECHNICAL DOCUMENT MODULE 1, ADMINISTRATIVE
INFORMATION
DOLUTEGRAVIR TABLETS 50 MG

Advise adolescents and adults of childbearing potential to avoid use of dolutegravir at the time of conception through the first trimester of pregnancy. Advise adolescents and adults of childbearing potential to contact their healthcare provider if they plan to become pregnant, become pregnant, or if pregnancy is suspected during treatment with dolutegravir [*see Warnings and Precaution (5.3)*].

Advise adolescents and adults of childbearing potential taking dolutegravir to consistently use effective contraception [*see Use in Specific Populations (8.1, 8.3)*].

Immune Reconstitution Syndrome

Advise patients to inform their healthcare provider immediately of any signs or symptoms of infection as inflammation from previous infection may occur soon after combination antiretroviral therapy, including when dolutegravir is started [*see Warnings and Precautions (5.5)*].

Pregnancy Registry

Inform patients that there is an antiretroviral pregnancy registry to monitor fetal outcomes in those exposed to dolutegravir during pregnancy [*see Use in Specific Populations (8.1)*].

Lactation

Instruct mothers with HIV-1 infection not to breastfeed because HIV-1 can be passed to the baby in the breast milk [*see Use in Specific Populations (8.2)*].

Missed Dosage

Instruct patients that if they miss a dose of dolutegravir, to take it as soon as they remember. Advise patients not to double their next dose or take more than the prescribed dose [*see Dosage and Administration (2)*].

TIVICAY, EPZICOM, JULUCA, and TRIUMEQ are trademarks owned by or licensed to the ViiV Healthcare group of companies. The other brands listed are trademarks owned by or licensed to their respective owners and are not owned by or licensed to the ViiV Healthcare group of companies. The makers of these brands are not affiliated with and do not endorse the ViiV Healthcare group of companies or its products.

All brand names mentioned are registered trademarks of their respective owners & are not trademarks of Micro Labs Limited.

Manufactured by:
Micro Labs Limited
Goa-4037 22 INDIA.

**MICRO LABS LTD
COMMON TECHNICAL DOCUMENT MODULE 1, ADMINISTRATIVE
INFORMATION
DOLUTEGRAVIR TABLETS 50 MG**

Manufactured for:

Micro Labs USA Inc.
Basking Ridge, NJ 07920

Revised: August 2019

**MICRO LABS LTD
COMMON TECHNICAL DOCUMENT MODULE 1, ADMINISTRATIVE
INFORMATION
DOLUTEGRAVIR TABLETS 50 MG**

**PATIENT INFORMATION
Dolutegravir (doe" loo teg' ra vir) Tablets**

What is dolutegravir tablet?

Dolutegravir tablet is a prescription medicine that is used to treat Human Immunodeficiency Virus-1 (HIV-1) infection together with:

- other antiretroviral medicines in adults and children who weigh at least 66 pounds (30 kg).
- rilpivirine in adults to replace their current anti-HIV-1 medicines when their healthcare provider determines that they meet certain requirements.

HIV-1 is the virus that causes Acquired Immune Deficiency Syndrome (AIDS).

It is not known if dolutegravir tablet is safe and effective in children who weigh less than 66 pounds (30 kg) or in children who have received certain types of medicine for HIV-1 infection.

Do not take dolutegravir tablet if you:

- have ever had an allergic reaction to a medicine that contains dolutegravir.
- take dofetilide.

Before you take dolutegravir tablets, tell your healthcare provider about all of your medical conditions, including if you:

- have ever had an allergic reaction to dolutegravir.
- have or have had liver problems, including hepatitis B or C infection.
- are pregnant or plan to become pregnant. Dolutegravir may harm your unborn baby.
 - **You should not take Dolutegravir Tablets at the time of becoming pregnant or during the first 12 weeks of pregnancy.** Your healthcare provider may change your medicine during this time in your pregnancy.
 - If you can become pregnant, your healthcare provider will perform a pregnancy test before you start treatment with Dolutegravir Tablets.
 - If you can become pregnant, you should consistently use effective birth control (contraception) during treatment with Dolutegravir Tablets.
 - Tell your healthcare provider right away if you are planning to become pregnant, you become pregnant, or think you may be pregnant during treatment with Dolutegravir Tablets.
- are breastfeeding or plan to breastfeed. **Do not breastfeed if you take dolutegravir tablets.**
 - You should not breastfeed if you have HIV-1 because of the risk of passing HIV-1 to your baby.
 - It is not known if dolutegravir can pass to your baby in your breast milk. Talk with your healthcare provider about the best way to feed your baby.

MICRO LABS LTD
COMMON TECHNICAL DOCUMENT MODULE 1, ADMINISTRATIVE
INFORMATION

DOLUTEGRAVIR TABLETS 50 MG

Tell your healthcare provider about all the medicines you take, including prescription and over-the-counter medicines, vitamins, and herbal supplements.

Some medicines interact with dolutegravir tablets. Keep a list of your medicines and show it to your healthcare provider and pharmacist when you get a new medicine.

- You can ask your healthcare provider or pharmacist for a list of medicines that interact with dolutegravir tablets.
- **Do not start taking a new medicine without telling your healthcare provider.** Your healthcare provider can tell you if it is safe to take dolutegravir tablets with other medicines.

How should I take dolutegravir tablets?

- Take dolutegravir tablets exactly as your healthcare provider tells you to take it.
- Take dolutegravir tablets with or without food.
- Do not change your dose or stop taking dolutegravir tablets without talking with your healthcare provider.
- If you take antacids, laxatives, or other medicines that contain aluminum, magnesium, or buffered medicines, dolutegravir tablets should be taken at least 2 hours before or 6 hours after you take these medicines.
- If you need to take iron or calcium supplements by mouth during treatment with dolutegravir tablets:
 - If you take dolutegravir tablets with food, you may take these supplements at the same time that you take dolutegravir tablets.
 - If you do not take dolutegravir tablets with food, take dolutegravir tablets at least 2 hours before or 6 hours after you take these supplements.
- Do not miss a dose of dolutegravir tablets.
- If you miss a dose of dolutegravir tablets, take it as soon as you remember. Do not take 2 doses at the same time or take more than your prescribed dose.
- Stay under the care of a healthcare provider during treatment with dolutegravir tablets.
- Do not run out of dolutegravir tablets. The virus in your blood may increase and the virus may become harder to treat. When your supply starts to run low, get more from your healthcare provider or pharmacy.
- If you take too much dolutegravir tablets, call your healthcare provider or go to the nearest hospital emergency room right away.

What are the possible side effects of dolutegravir tablets?

- **Dolutegravir tablets can cause serious side effects including:**
- **Allergic reactions.** Call your healthcare provider right away if you develop a rash with dolutegravir tablets. **Stop taking dolutegravir tablets and get medical help right away if you develop a rash with any of the following signs or symptoms:**

○ fever	○ blisters or peeling of the skin
---------	-----------------------------------

MICRO LABS LTD
COMMON TECHNICAL DOCUMENT MODULE 1, ADMINISTRATIVE
INFORMATION
DOLUTEGRAVIR TABLETS 50 MG

○ generally ill feeling	○ redness or swelling of the eyes
○ tiredness	○ swelling of the mouth, face, lips, or tongue
○ muscle or joint aches	○ problems breathing
○ blisters or sores in mouth	

- **Liver problems.** People with a history of hepatitis B or C virus may have an increased risk of developing new or worsening changes in certain liver tests during treatment with dolutegravir tablets. Liver problems, including liver failure, have also happened in people without a history of liver disease or other risk factors. Your healthcare provider may do blood tests to check your liver. **Call your healthcare provider right away if you develop any of the following signs or symptoms of liver problems:**

○ your skin or the white part of your eyes turns yellow (jaundice)	○ nausea or vomiting
○ dark or “tea-colored” urine	○ loss of appetite
○ light-colored stools (bowel movements)	○ pain, aching, or tenderness on the right side of your stomach area

- **Changes in your immune system (Immune Reconstitution Syndrome)** can happen when you start taking HIV-1 medicines. Your immune system may get stronger and begin to fight infections that have been hidden in your body for a long time. Tell your healthcare provider right away if you start having new symptoms after you start taking dolutegravir tablets.

- **The most common side effects of dolutegravir tablets include:**

• trouble sleeping	• tiredness	• headache
--------------------	-------------	------------

These are not all the possible side effects of dolutegravir tablets. Call your doctor for medical advice about side effects. You may report side effects to FDA at 1-800-FDA-1088.

How should I store dolutegravir tablets?

Store Dolutegravir tablets at room temperature between 68°F to 77°F (20°C to 25°C).

Keep dolutegravir tablets and all medicines out of the reach of children.

General information about the safe and effective use of dolutegravir tablets.

Medicines are sometimes prescribed for purposes other than those listed in a Patient Information leaflet. Do not use dolutegravir tablets for a condition for which it was not prescribed. Do not give dolutegravir tablets to other people, even if they have the same symptoms you have. It may harm them. You can ask your healthcare provider or pharmacist for information about dolutegravir tablets that is written for health professionals.

MICRO LABS LTD
COMMON TECHNICAL DOCUMENT MODULE 1, ADMINISTRATIVE
INFORMATION
DOLUTEGRAVIR TABLETS 50 MG

For more information call 1-855-839-8195.

What are the ingredients in dolutegravir tablets?

Active ingredient: dolutegravir sodium.

Inactive ingredients: D-mannitol, microcrystalline cellulose, povidone K30, sodium starch glycolate, and sodium stearyl fumarate. The tablet film-coating contains the inactive ingredients, D&C Yellow No. 10, FD&C Blue No. 2, macrogol/PEG, polyvinyl alcohol, talc, and titanium dioxide.

This Patient Information has been approved by the U.S. Food and Drug Administration.

Manufactured by:
Micro Labs Limited
Goa-4037 22 INDIA.

Manufactured for:
Micro Labs USA Inc.
Basking Ridge, NJ 07920

Revised: August 2019

MICRO LABS LTD
COMMON TECHNICAL DOCUMENT MODULE 1, ADMINISTRATIVE
INFORMATION
DOLUTEGRAVIR TABLETS 50 MG

give dolutegravir tablets to other people, even if they have the same symptoms you have. It may harm them. You can ask your healthcare provider or pharmacist for information about dolutegravir tablets that is written for health professionals.

For more information call 1-855-839-8195.

What are the ingredients in dolutegravir tablets?

Active ingredient: dolutegravir sodium.

Inactive ingredients: D-mannitol, microcrystalline cellulose, povidone K30, sodium starch glycolate, and sodium stearyl fumarate. The tablet film-coating contains the inactive ingredients, D&C Yellow No. 10, FD&C Blue No. 2, macrogol/PEG, polyvinyl alcohol, talc, and titanium dioxide.

This Patient Information has been approved by the U.S. Food and Drug Administration.

Manufactured by:

Micro Labs Limited
Goa-4037 22 INDIA.

Manufactured for:

Micro Labs USA Inc.
Basking Ridge, NJ 07920

Revised: August 2019